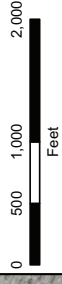


APPENDIX E
REVEGETATION PLAN FIGURES

Figure 1.

Project Area Plan



Date: May 2010
 Map By: Michael Rochelle
 File Path: \\wra\mrochelle\Projects\2010\Lehigh\Map\2010 Figures\Revised\Proposed_Project.mxd

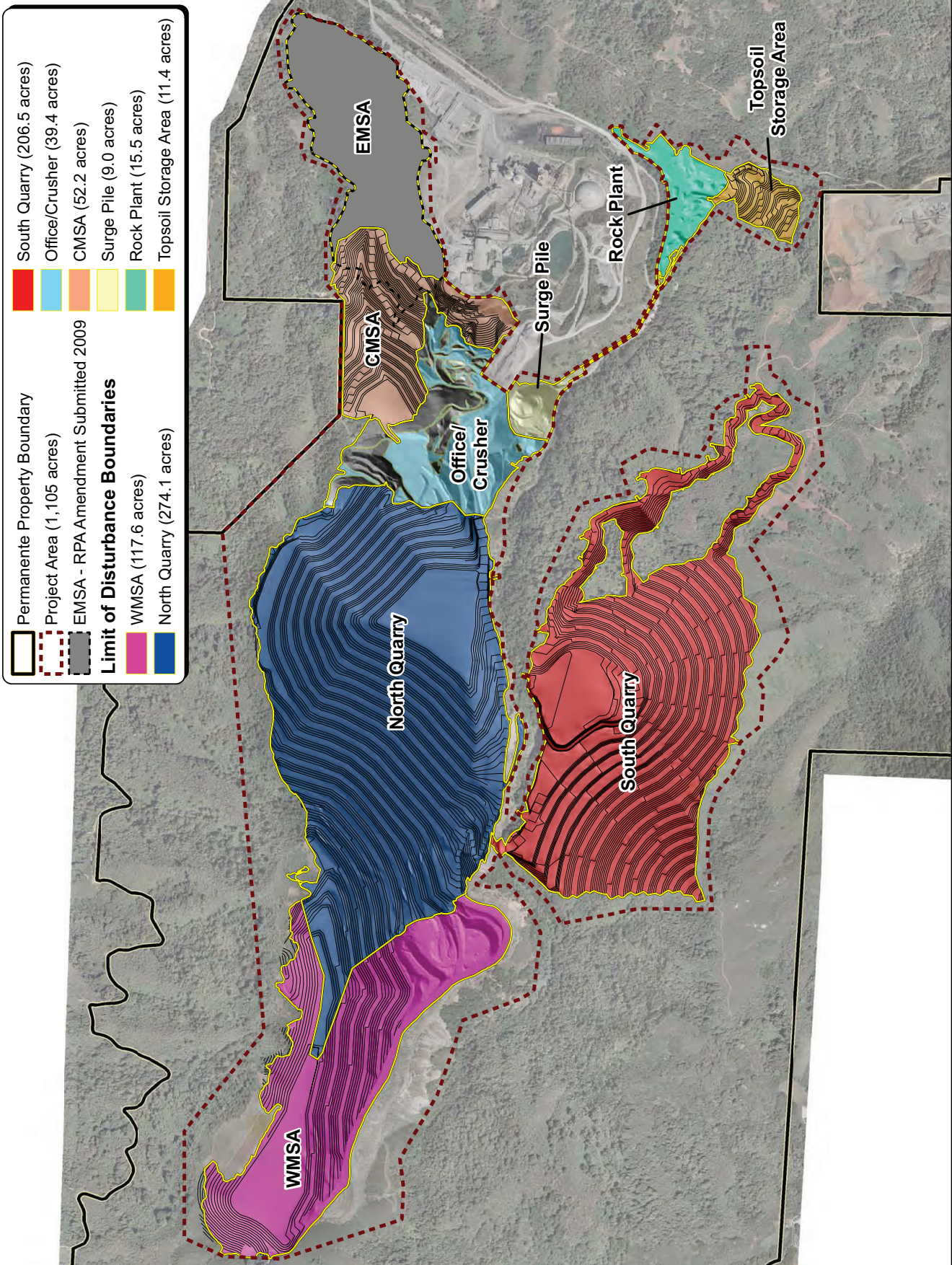
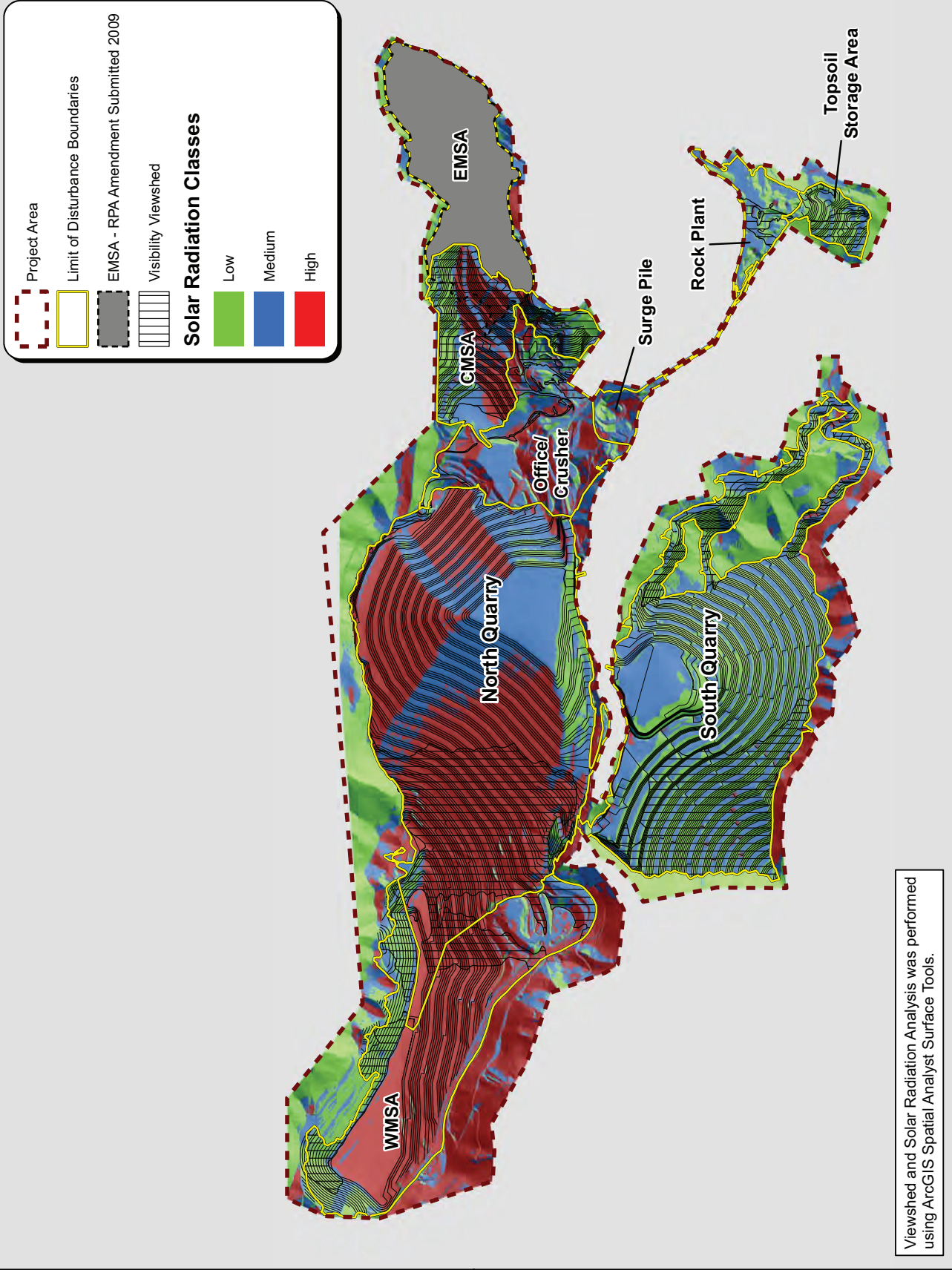


Figure 2.

Visibility and
Solar Radiation
Analysis



Date: May 2010
Map By: Michael Rochelle
Project: Lehigh Permanente Quarry
2010 Report\Revegetation Plan\Visibility_SolarRadiation.mxd



Viewshed and Solar Radiation Analysis was performed using ArcGIS Spatial Analyst Surface Tools.

Figure 3:
Soil Sample Locations



Permanent Property Boundary
 Project Area
 Limit of Disturbance Boundaries
 EMSA - RPA Amendment Submitted 2009
+ Soil Sample Locations

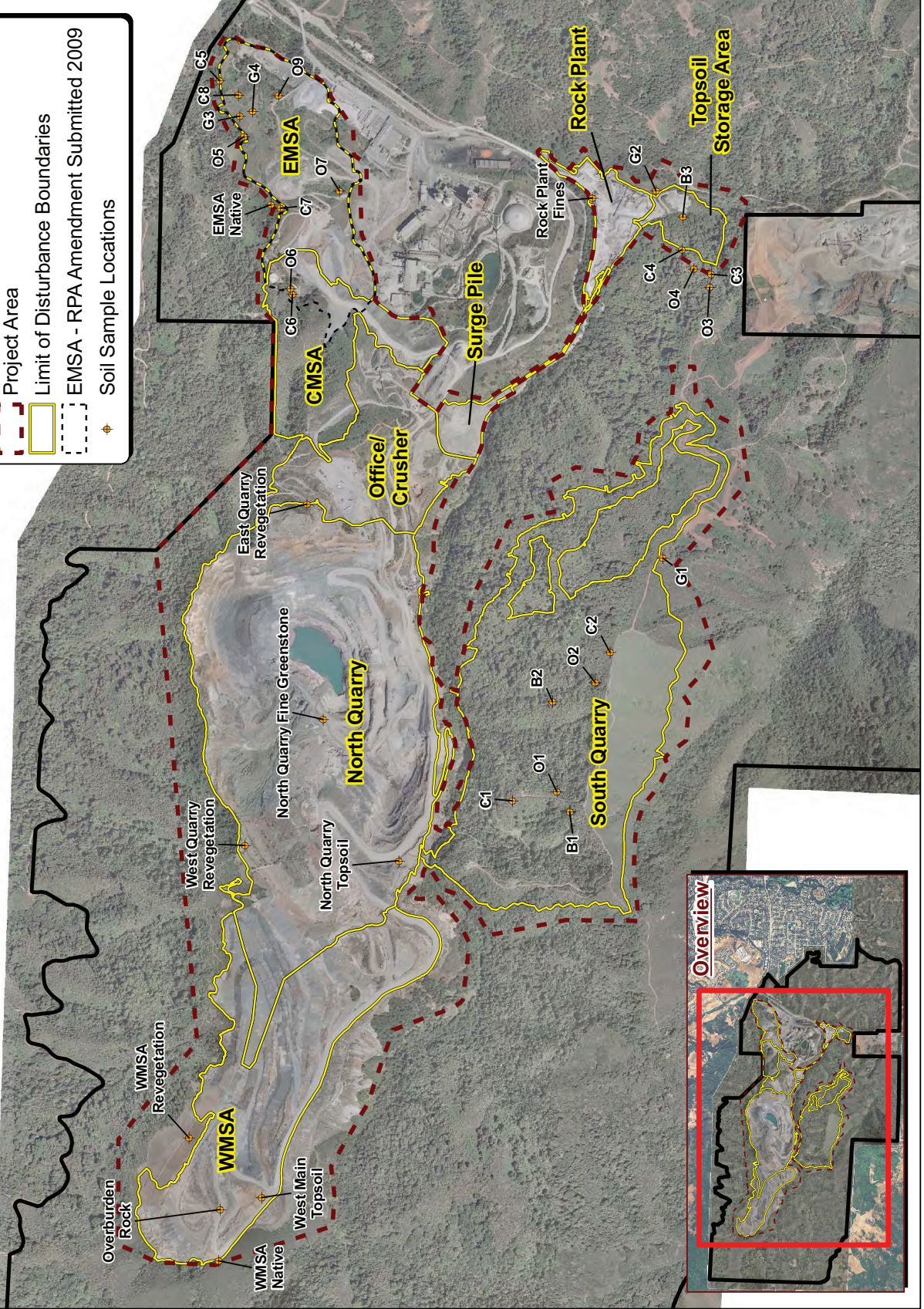


Figure 4.
Proposed Revegetation
Plan



Date: May 2010
Map By: Michael Rochelle
Map No: 01016145(Arcmap)
2010 Report/Revegetation Plan/Proposed Reveg.mxd

Project Area

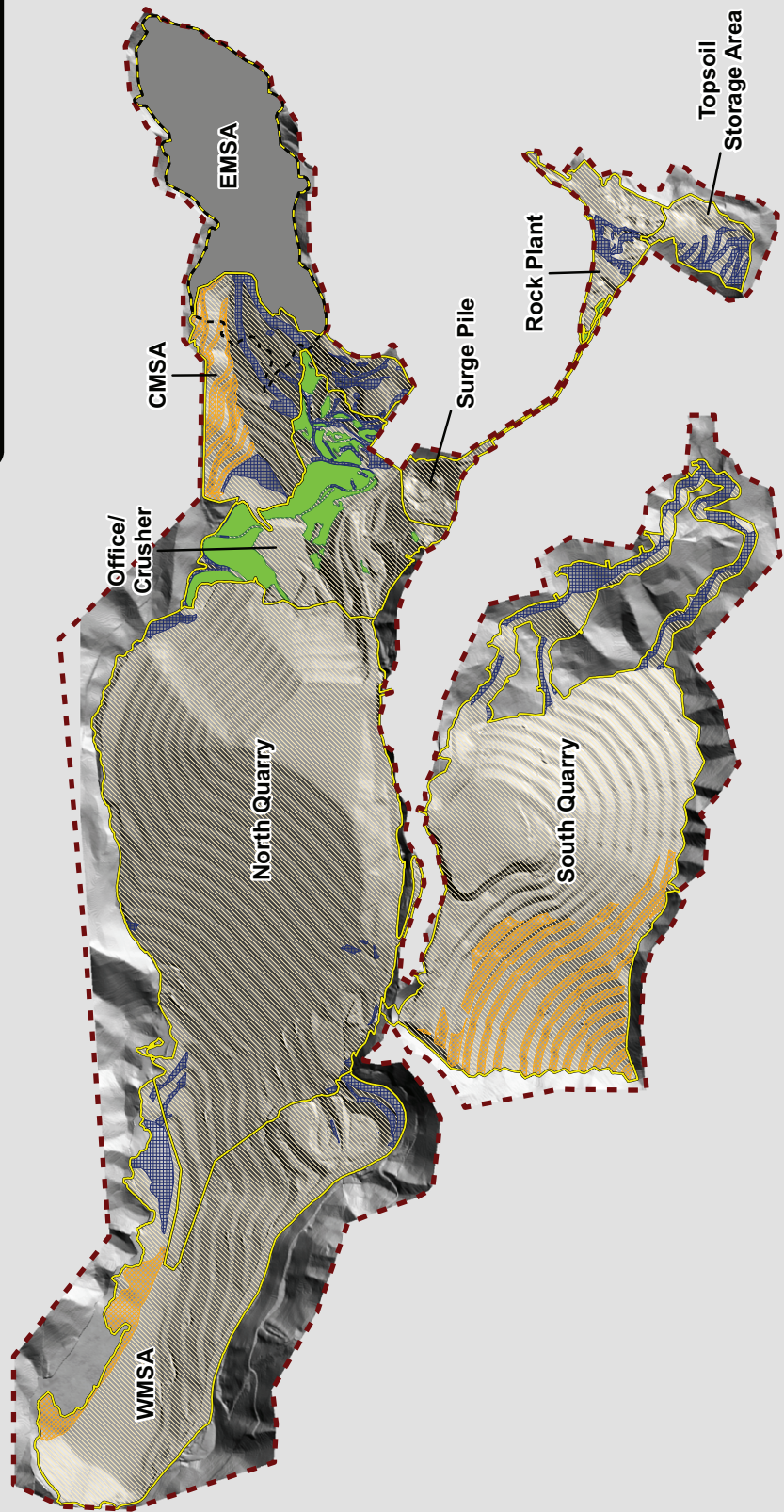
- Limit of Disturbance Boundaries
- EMSA - RPA-Amendment Submitted 2009
- Undisturbed Existing Vegetation

Proposed Revegetation Plan

- Oak Woodland and Hydroseed (39.3 acres)
- Pine Woodland and Hydroseed (39.1)
- Hydroseeded Shrubs and Grasses (627.3 acres)

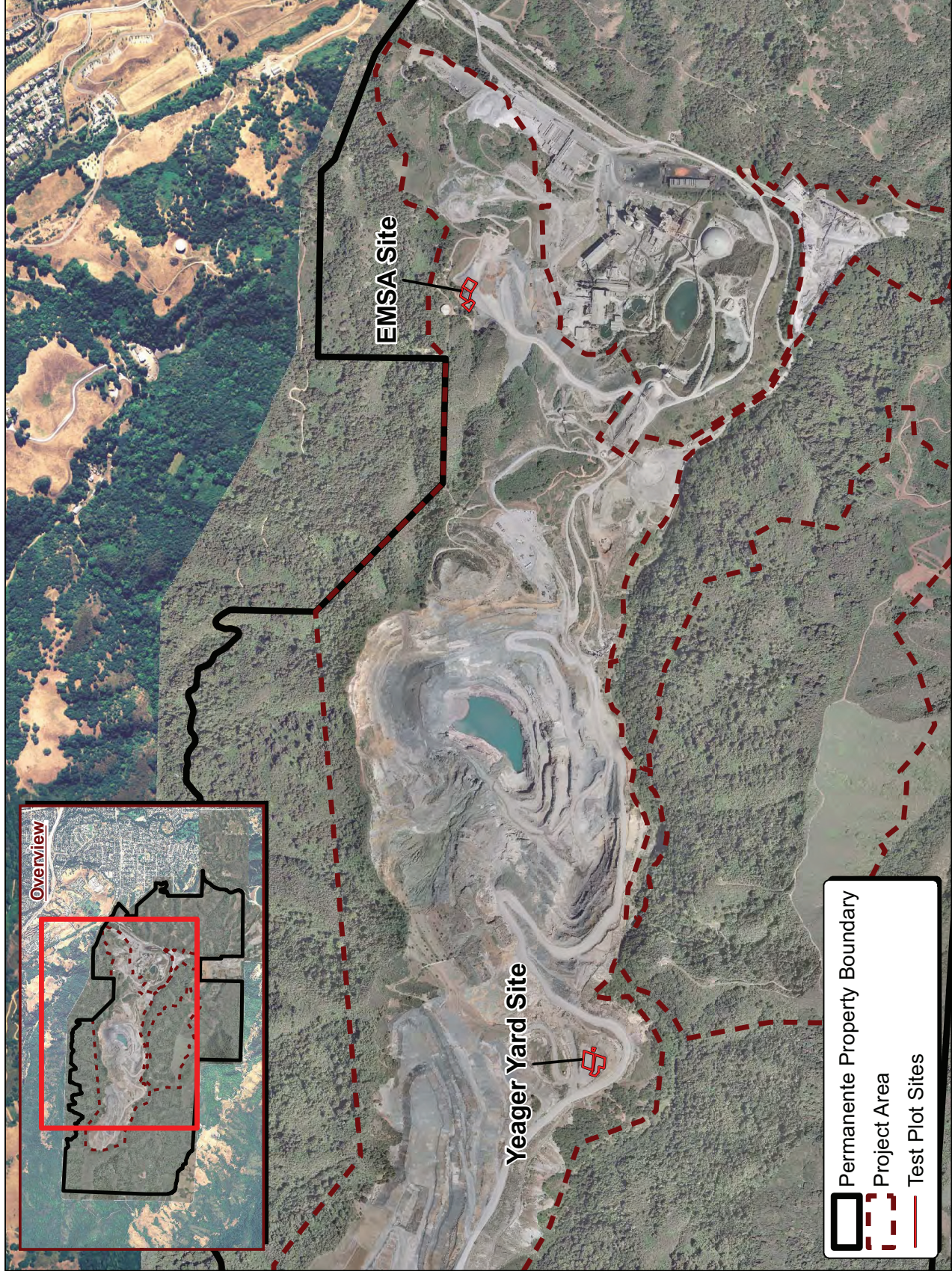
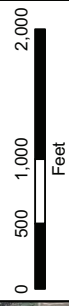
	North Quarry	WMSA	EMSA	Rock Plant	Topsoil	South Quarry	Surge Pile	Office/Crusher	EMSA	CMMSA	Topsoil	South Quarry	Surge Pile	Office/Crusher	TOTAL
Oak Plantings + hydroseed (acres; 12" topsoil)	0.0	7.5	7.0	0.0	0.0	24.8	0.0	0.0	0.0	0.0	0.0	0.0	0.0	0.0	39.3
Pine Plantings + hydroseed (acres; 12" topsoil)	2.7	6.9	8.5	1.9	3.2	12.6	0.0	0.0	0.0	0.0	0.0	0.0	0.0	0.0	39.1
Hydroseed only (acres; 3" topsoil)	261.1	101.9	35.9	13.6	8.0	161.7	9.0	36.1	0.0	0.0	0.0	0.0	0.0	0.0	627.3
Total Revegetation Area (acres; minus drainage)	263.8	116.3	51.4	15.5	11.2	195.1	9.0	39.4	0.0	0.0	0.0	0.0	0.0	0.0	705.7
Minimum Topsoil Volume (cubic yards)	164,499	96,497	59,229	12,826	12,584	188,336	5,445	29,826	0.0	0.0	0.0	0.0	0.0	0.0	569,244
Impacted Oak Woodland (acres)	0.7	0	2.4	0	5.7	27.7	0	0	0	0	0	0	0	0	36.5
Impacted Oak Woodland (trees, estimated)	35	0	120	0	285	1,383	0	0	0	0	0	0	0	0	1,824
# oak trees planted	0	2010	1876	0	0	6646	0	0	0	0	0	0	0	0	10,532
# pine trees planted	1085	2774	3417	764	1285	5065	0	1327	0	0	0	0	0	0	15,718
Total Number of Trees (including others)	1450	7725	8317	1020	1718	20059	0	1772	0	0	0	0	0	0	42,062

notes: Tree spacing is 9 feet on center = 537 trees/acre.
 1 Oak planting areas are planted with 50% oaks, 50% other tree/shrub species.
 2 Pine planting areas are planted with 75% pine, 25% other tree/shrub species.
 3 Pine planting area calculations includes the two proposed riparian planting areas
 4 Total Topsoil Available = ~625,000 cubic yards.



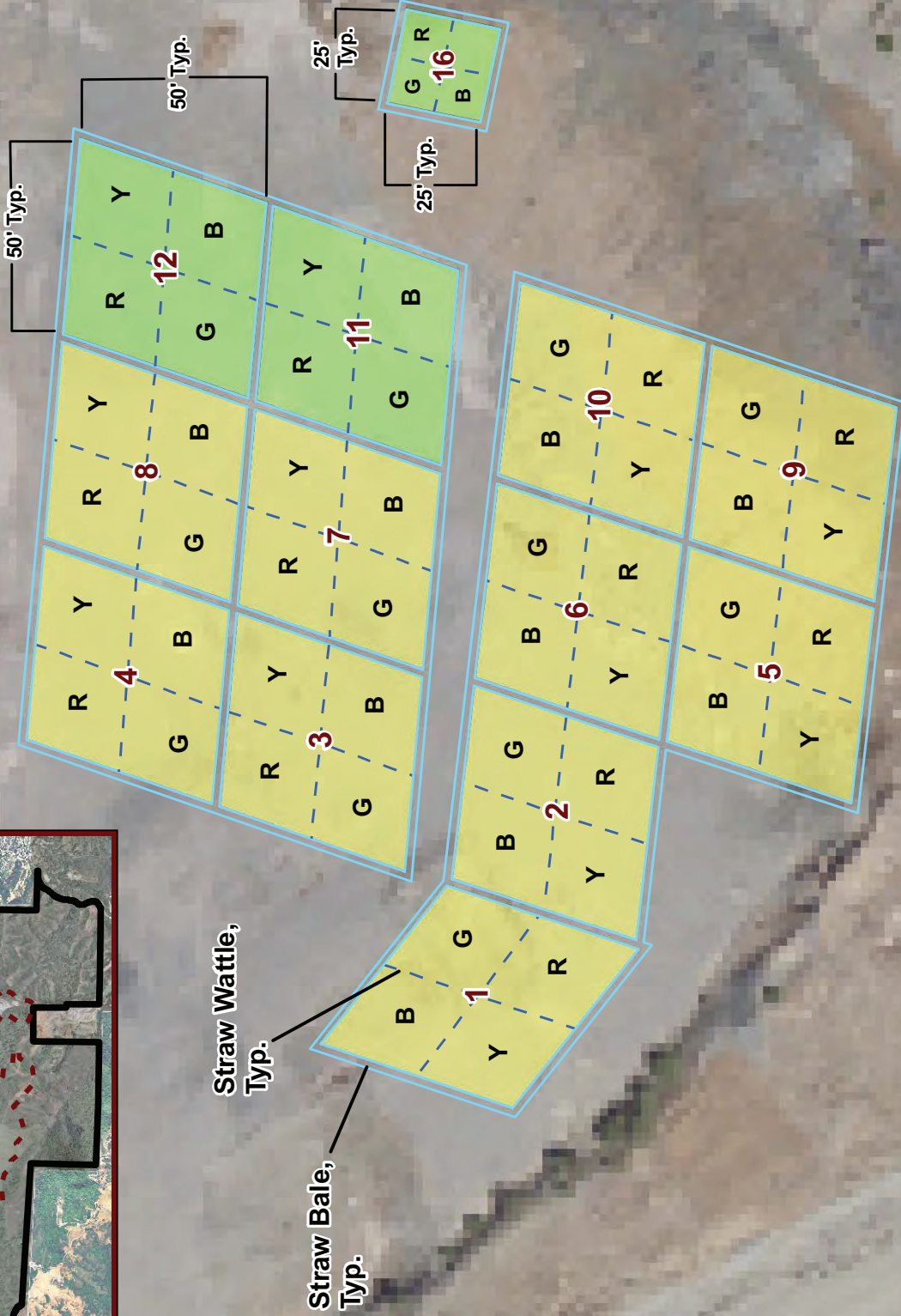
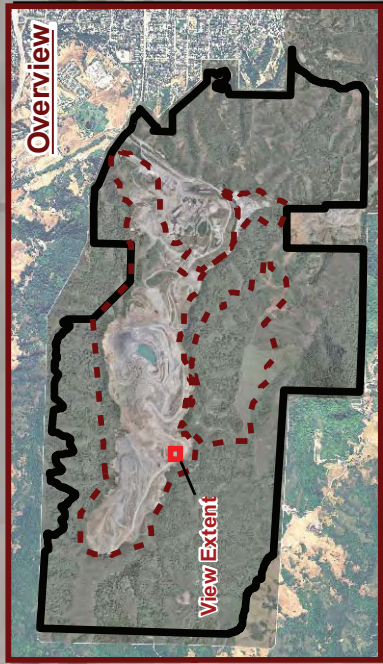
Date: May 2010
Map By: Michael Rochelle
Map No: 01016145(Arcmap)
2010 Report/Revegetation Plan/Proposed Reveg.mxd

Figure 5.
Test Plot
Location Map



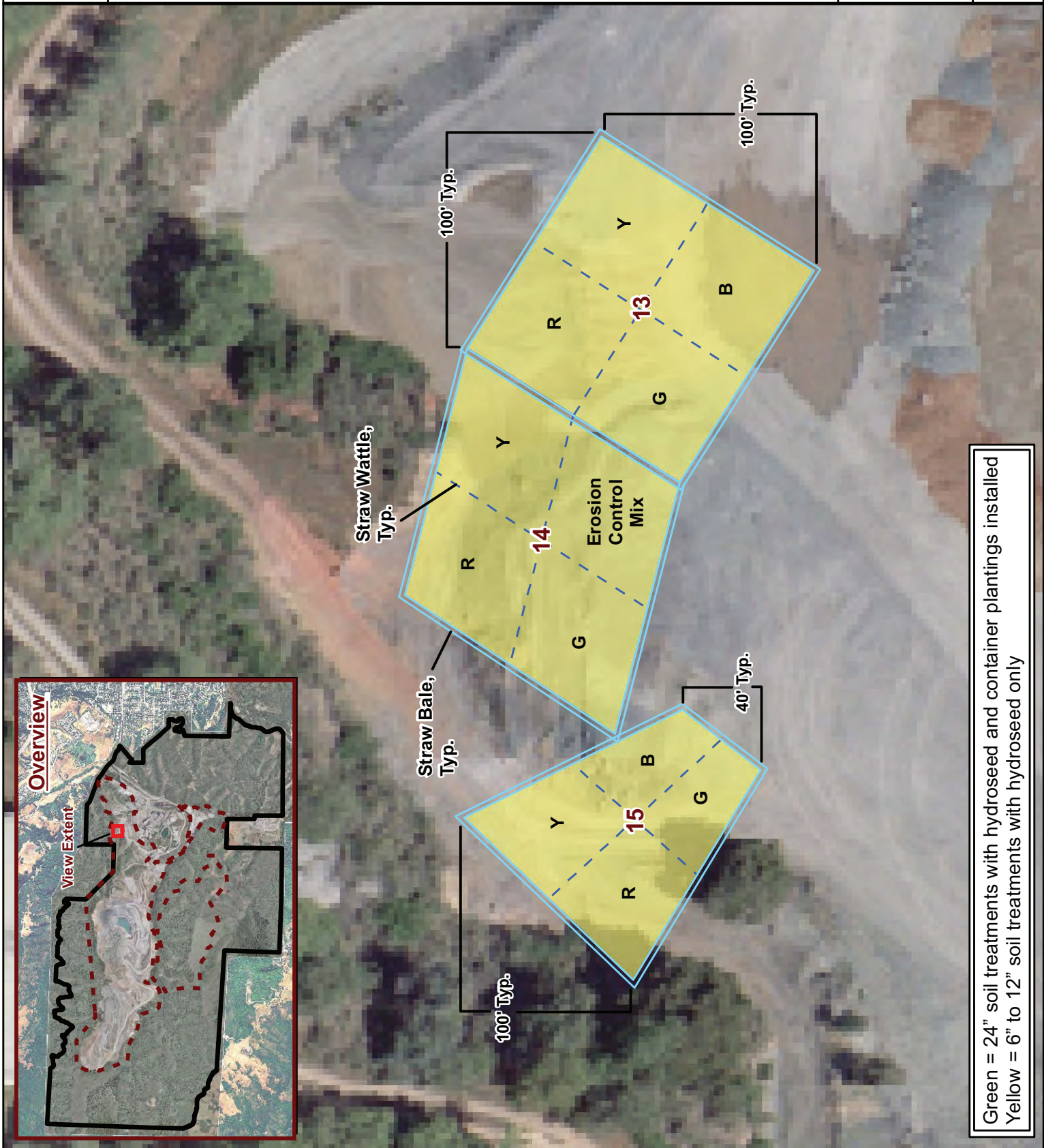
 Permanent Property Boundary
 Project Area
 Test Plot Sites

Figure 6.
Test Plot Layout
at Yeager Yard Site



Green = 24" soil treatments with hydroseed and container plantings installed
Yellow = 6" to 12" soil treatments with hydroseed only

Figure 7.
Test Plot Layout
at EMSA Site



Green = 24" soil treatments with hydroseed and container plantings installed
Yellow = 6" to 12" soil treatments with hydroseed only

Attachment C
Geotechnical Report