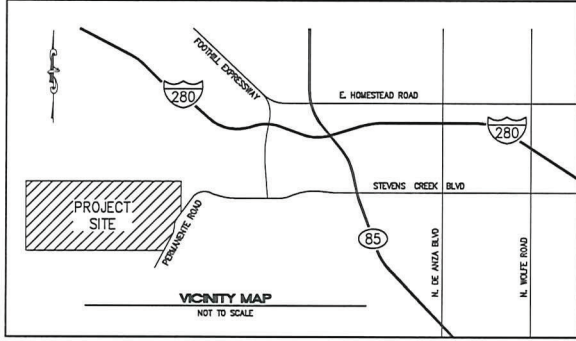
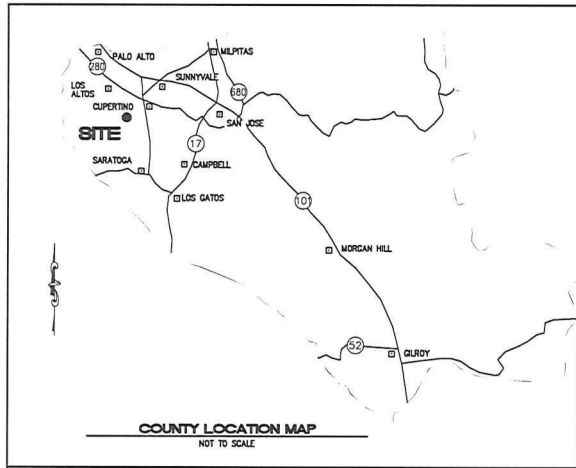
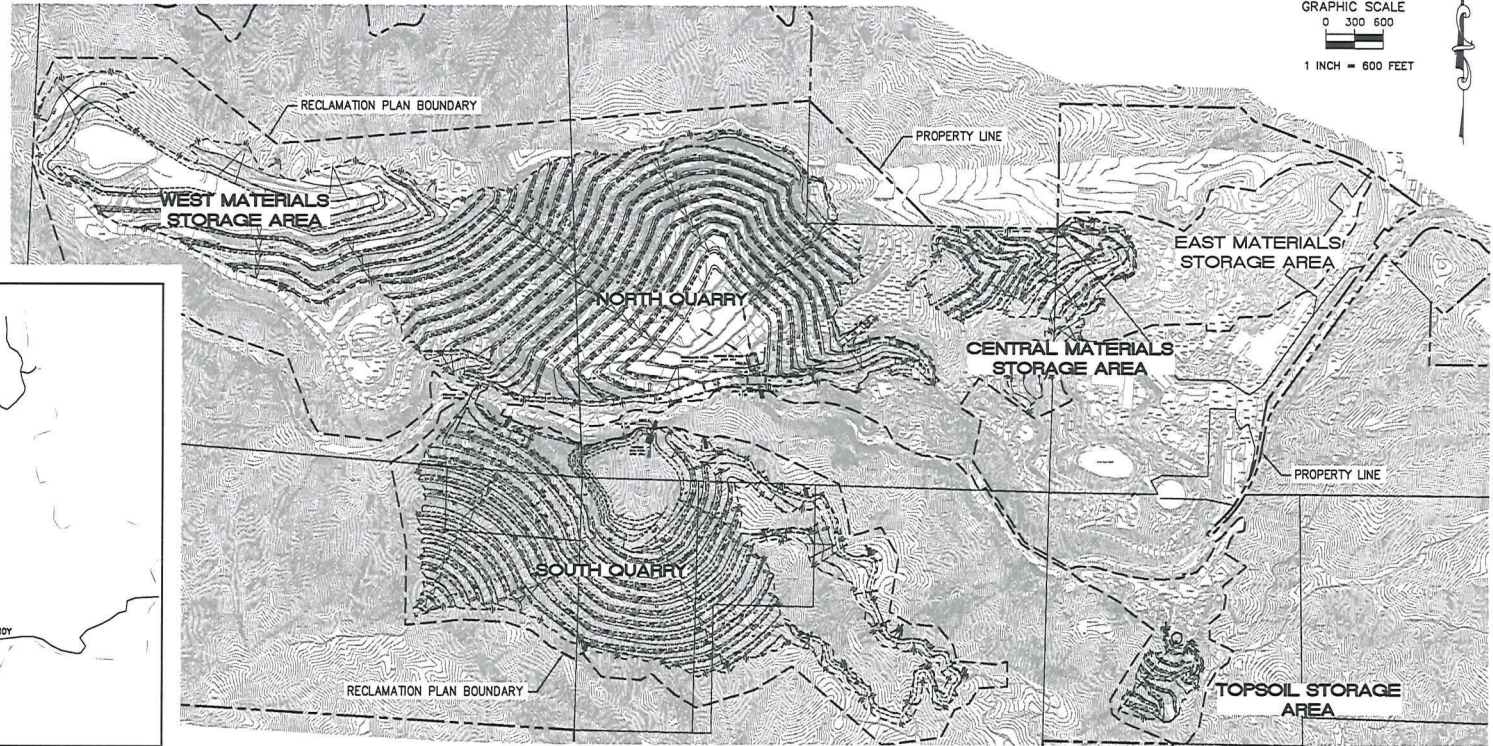


RECLAMATION PLAN FOR: PERMANENTE QUARRY

SANTA CLARA COUNTY, CALIFORNIA

GRAPHIC SCALE
0 300 600
1 INCH = 600 FEET



SITE MAP
SCALE: 1"=600'

ENGINEER OF WORK

WAYNE K. CHANG, P.E. 48548 DATE _____
CHANG CONSULTANTS
P.O. BOX 9490
FRANCO SANTA FE, CA 92087
(650) 692-0790

| OPERATOR | SHEET INDEX | Chang Consultants <small>Civil Engineering - Hydrology - Architecture - Sedimentation</small> P.O. Box 9490 P. 650.622.0790 Francisco Santa Fe, CA 92087 F. 650.622.1462 |
|-----------------------------------------------------------------------------------------------------------------------------------------------------------------------------------------------------------------------------------------------------------------------------------------------------------------------------------------------------------|-------------------------------------------------------------------------------------------------------------------------------------------------------------------------------------------------------------------------------------------------------------------------------------------------------------------------------------------------------------------------------------------------------------------------------------------------------------------------------------------------------------------------------------------------------------------------------------------------------------------------------------------------------------------------------------------------------------------------------------------------------------------------------------------------------------------------------------------------------------------------------------------------------------------------------------------------------------------------------------------------------------------------------------------------------------------------------------------------------------------------------------------------------------------------------------------------------------------------------------|---------------------------------------------------------------------------------------------------------------------------------------------------------------------------------------------|
| NAME: LEDIGH SOUTHWEST CEMENT COMPANY ADDRESS: 24001 STEVENS CREEK BLVD CUPERTINO, CA 95014 TELEPHONE: 408-996-4000 SHORT LEGAL: SEC 18 T7S R2W M08A; W 1/4 & SE 1/4 SEC 17 T7S R2W M08A A.P.N.: 351-09-022; 351-10-005, 037, 038 SITE ADDRESS: 24001 STEVENS CREEK BLVD, CUPERTINO, CA 95014 | SHEET 1: TITLE SHEET SHEET 2: LEGEND AND DETAILS SHEET 3: WEST MATERIALS STORAGE AREA PHASE 1 SHEET 4: WEST MATERIALS STORAGE AREA PHASES 2, 3, AND 4 SHEET 5: WEST MATERIALS STORAGE AREA PHASE 5 SHEET 6: WEST MATERIALS STORAGE AREA CROSS-SECTIONS SHEET 7: NORTH QUARRY PHASE 1 SHEET 8: NORTH QUARRY PHASE 2 SHEET 9: NORTH QUARRY PHASE 3 SHEET 10: NORTH QUARRY PHASE 4 SHEET 11: NORTH QUARRY PHASE 5 SHEET 12: NORTH QUARRY PHASE 6 SHEET 13: NORTH QUARRY CROSS-SECTIONS SHEET 14: CENTRAL MATERIALS STORAGE AREA PHASE 1 SHEET 15: CENTRAL MATERIALS STORAGE AREA PHASES 2, 3, AND 4 SHEET 16: CENTRAL MATERIALS STORAGE AREA CROSS-SECTIONS SHEET 17: CENTRAL MATERIALS STORAGE AREA PHASE 5 SHEET 18: SOUTH QUARRY PHASE 1 SHEET 19: SOUTH QUARRY PHASE 2 SHEET 20: SOUTH QUARRY PHASE 3 SHEET 21: SOUTH QUARRY PHASE 4 SHEET 22: SOUTH QUARRY PHASE 5 - BACKFILL SHEET 23: SOUTH QUARRY CROSS-SECTIONS SHEET 24: TOPSOIL STORAGE AREA PHASES 1, 2, 3 AND CROSS-SECTIONS | RECLAMATION PLAN FOR PERMANENTE QUARRY TITLE SHEET |
| REVISION 1 REVISION 2 REVISION 3 | CD. FILE | SHEET 1 OF 25 MAY 23, 2010 |

FOR PLAN CHECK ONLY

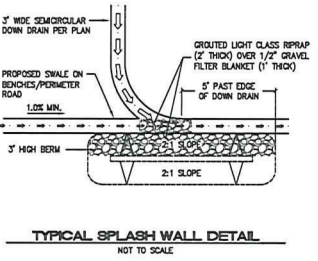
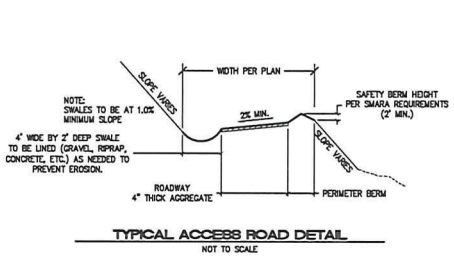
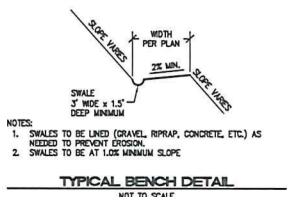
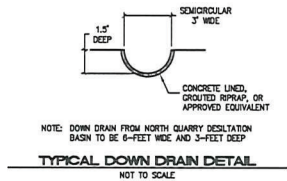
CHANG CONSULTANTS
(650) 692-0760

LEGEND

| | |
|------------|--------------------------------------------|
| | PROPOSED CONTOUR AND ELEVATION LABEL |
| | EXISTING CONTOUR AND ELEVATION LABEL |
| | PROPERTY LINE |
| | RECLAMATION PLAN BOUNDARY |
| | PERIMETER DAYLIGHT LINE |
| | PROPOSED STORM DRAIN AND RISER |
| | PROPOSED RIPRAP PAD |
| | CONCRETE OR DG SWALE (DG TO BE MAINTAINED) |
| | GENERAL FLOW DIRECTION |
| | PROPOSED SWALE OR DOWN DRAIN |
| 30A | DESILT BASIN LABEL |

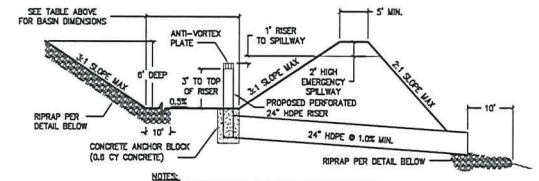
NOTE:
 THE PROPOSED FACILITIES AND RECLAMATION GRADING SHOWN ON THESE PLANS ARE APPROXIMATE. THE ACTUAL SURFACE DISTURBANCE, GRADING AND DESILTATION BASIN LOCATIONS DURING EXCAVATION AND BACKFILL MAY VARY FROM THAT DEPICTED. ALTHOUGH THE TOTAL DISTURBED AND RECLAIMED ACREAGE SHOULD BE SIMILAR, WHILE THIS PLAN REFLECTS THE BEST AVAILABLE DATA, THE EXCAVATION AND BACKFILL MAY VARY DUE TO ACTUAL GEOLOGICAL CONDITIONS ENCOUNTERED, ENGINEERING, PHASING, AND OTHER CONSIDERATIONS.

THE BASE TOPOGRAPHIC MAPPING USED IS A COMBINATION OF FLOW AERIAL TOPOGRAPHY FROM 2007, 2008, AND FIELD SURVEY IN COMPLETED IN 2009. THE 2007 TOPOGRAPHIC MAPPING IS AT A 2-FOOT CONTOUR INTERVAL AND THE 2008 TOPOGRAPHIC MAPPING IS AT A 10-FOOT CONTOUR INTERVAL. THE ACCURACY IS ONE-HALF THE CONTOUR INTERVAL.



| LOCATION | DESILTATION BASIN NO. | BASIN FLOOR MINIMUM LENGTH (FEET) | BASIN FLOOR MINIMUM WIDTH (FEET) |
|--------------|-----------------------|-----------------------------------|----------------------------------|
| SOUTH QUARRY | 40A | 57 | 29 |
| SOUTH QUARRY | 40B | 41 | 21 |
| SOUTH QUARRY | 40C | 63 | 32 |
| SOUTH QUARRY | 40D | 28 | 14 |
| SOUTH QUARRY | 40E | 20 | 10 |
| SOUTH QUARRY | 40F | 28 | 14 |
| SOUTH QUARRY | 40C | 42 | 21 |
| NORTH QUARRY | 50A | 141 | 70 |
| TOPSOIL AREA | 60A | 41 | 21 |

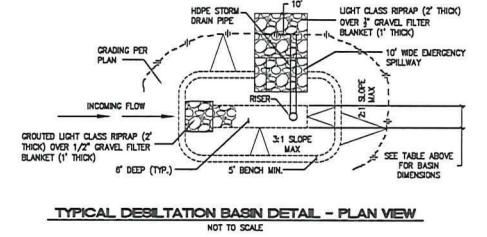
DESILTATION BASIN DIMENSIONS



NOTES:

1. CREATE 1" DIAMETER HOLES OR SLOTS IN RISER TO PREVENT WATER FROM PONDING PERMANENTLY IN BASIN.
2. THE RISER AND OUTLET PIPE FOR THE NORTH QUARRY BASIN TO BE A 42" HOPE, CONCRETE ANCHOR BLOCK TO CONTAIN 1.2 CY CONCRETE.

TYPICAL DESILTATION BASIN DETAIL - PLAN VIEW
 NOT TO SCALE

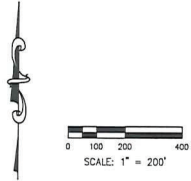
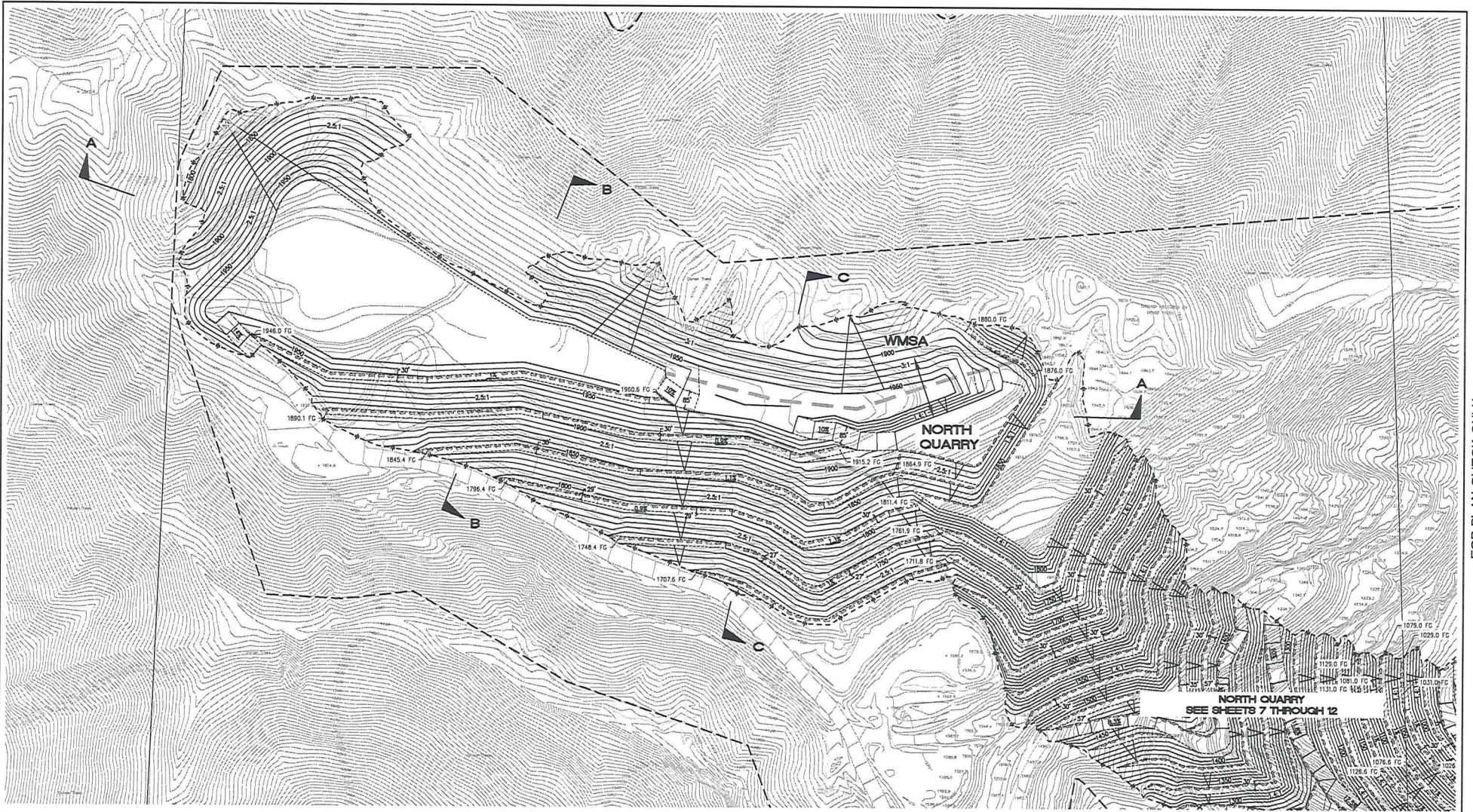


| OPERATOR | | SHEET INDEX | | Chang Consultants Civil Engineering/Hydrology/Reclamation/Restoration P.O. Box 9495 T. 858.682.8750 Riverside, California, CA 92507 F. 951.832.1482 | |
|---------------|---------------------------------------------------------|-------------|-----------------------------------------------|--------------------------------------------------------------------------------------------------------------------------------------------------------------|-----------------------------------------------|
| NAME: | LDHIGH SOUTHWEST CEMENT COMPANY | SHEET 1: | TITLE SHEET | SHEET 14: | CENTRAL MATERIALS STORAGE AREA PHASE 1 |
| ADDRESS: | 24001 STEVENS CREEK BLVD CUPERTINO, CA 95014 | SHEET 2: | LEGEND AND DETAILS | SHEET 15: | CENTRAL MATERIALS STORAGE AREA PHASE 1 |
| TELEPHONE: | 408-996-4000 | SHEET 3: | WEST MATERIALS STORAGE AREA PHASE 1 | SHEET 16: | CENTRAL MATERIALS STORAGE AREA PHASE 2 |
| SHORT LEGAL: | SEC 18 T7S R2W MOBN; W 1/4 & SE 1/4 SEC 17 T7S R2W MOBN | SHEET 4: | WEST MATERIALS STORAGE AREA PHASE 2, 3, AND 4 | SHEET 17: | CENTRAL MATERIALS STORAGE AREA PHASE 3 |
| A.P.N.: | 351-08-022; 351-10-005, 037, 038 | SHEET 5: | WEST MATERIALS STORAGE AREA PHASE 3 | SHEET 18: | CENTRAL MATERIALS STORAGE AREA CROSS-SECTIONS |
| SITE ADDRESS: | 24001 STEVENS CREEK BLVD, CUPERTINO, CA 95014 | SHEET 6: | WEST MATERIALS STORAGE AREA CROSS-SECTIONS | SHEET 19: | SOUTH QUARRY PHASE 1 |
| | | SHEET 7: | NORTH QUARRY PHASE 1 | SHEET 20: | SOUTH QUARRY PHASE 2 |
| | | SHEET 8: | NORTH QUARRY PHASE 2 | SHEET 21: | SOUTH QUARRY PHASE 3 |
| | | SHEET 9: | NORTH QUARRY PHASE 3 | SHEET 22: | SOUTH QUARRY PHASE 4 |
| | | SHEET 10: | NORTH QUARRY PHASE 4 | SHEET 23: | SOUTH QUARRY PHASE 5 - BACKFILL |
| | | SHEET 11: | NORTH QUARRY PHASE 5 - BACKFILL | SHEET 24: | SOUTH QUARRY CROSS-SECTIONS |
| | | SHEET 12: | POST-DESILTATION TO SOUTH QUARRY | SHEET 25: | TOPSOIL STORAGE AREA |
| | | SHEET 13: | NORTH QUARRY CROSS-SECTIONS | SHEET 26: | PHASES 1, 2, 3 AND CROSS-SECTIONS |
| | | | | REVISION 1 | SHEET 2 |
| | | | | REVISION 2 | 28 |
| | | | | REVISION 3 | CO. FILE |

RECLAMATION PLAN FOR PERMANENTE QUARRY
LEGEND AND DETAILS

FOR PLAN CHECK ONLY

CHANG CONSULTANTS
 (650) 692-0760



| OPERATOR | SHEET INDEX | |
|--------------------------------------------------------------------|--------------------------------------------------------|------------------------------------------------------------|
| NAME: LEHIGH SOUTHWEST CEMENT COMPANY | SHEET 1 TITLE SHEET | SHEET 14 CENTRAL MATERIALS STORAGE AREA PHASE 1 |
| ADDRESS: 24001 STEVENS CREEK BLVD CUPERTINO, CA 95014 | SHEET 2 LEANS AND DETAILS | SHEET 15 CENTRAL MATERIALS STORAGE AREA PHASES 2, 3, AND 4 |
| TELEPHONE: 408-996-4000 | SHEET 3 WEST MATERIALS STORAGE AREA PHASES 1, 2, AND 8 | SHEET 16 CENTRAL MATERIALS STORAGE AREA PHASE 2 |
| SHORT LEGAL: SEC 18 T7S R2W M2B: W 1/4 & SE 1/4 SEC 17 T7S R2W M2B | SHEET 4 WEST MATERIALS STORAGE AREA PHASE 3 | SHEET 17 CENTRAL MATERIALS STORAGE AREA CROSS-SECTIONS |
| A.P.N. 351-09-022; 351-10-005, 037, 038 | SHEET 5 WEST MATERIALS STORAGE AREA CROSS-SECTIONS | SHEET 18 SOUTH QUARRY PHASE 1 |
| SITE ADDRESS: 24001 STEVENS CREEK BLVD, CUPERTINO, CA 95014 | SHEET 6 NORTH QUARRY PHASE 1 | SHEET 19 SOUTH QUARRY PHASE 2 |
| | SHEET 7 NORTH QUARRY PHASE 2 | SHEET 20 SOUTH QUARRY PHASE 3 |
| | SHEET 8 NORTH QUARRY PHASE 3 | SHEET 21 SOUTH QUARRY PHASE 4 |
| | SHEET 9 PRE-BACKFILL TO SOUTH QUARRY | SHEET 22 SOUTH QUARRY PHASE 5 |
| | SHEET 10 POST-BACKFILL TO SOUTH QUARRY | SHEET 23 SOUTH QUARRY PHASE 5 - BACKFILL |
| | SHEET 11 NORTH QUARRY PHASE 1 - 4 | SHEET 24 SOUTH QUARRY PHASE 5 - BACKFILL |
| | SHEET 12 POST-BACKFILL TO SOUTH QUARRY | SHEET 25 TOPSOIL STORAGE AREA |
| | SHEET 13 NORTH QUARRY CROSS-SECTIONS | SHEET 26 PHASES 1, 2, 3 AND CROSS-SECTIONS |

Chang Consultants
Civil Engineering, Hydrology, Hydraulics, Sedimentation
P.O. Box 10000 • T. 650.852.0700
Riverside, Santa Fe, CA 92507 • F. 650.852.1402

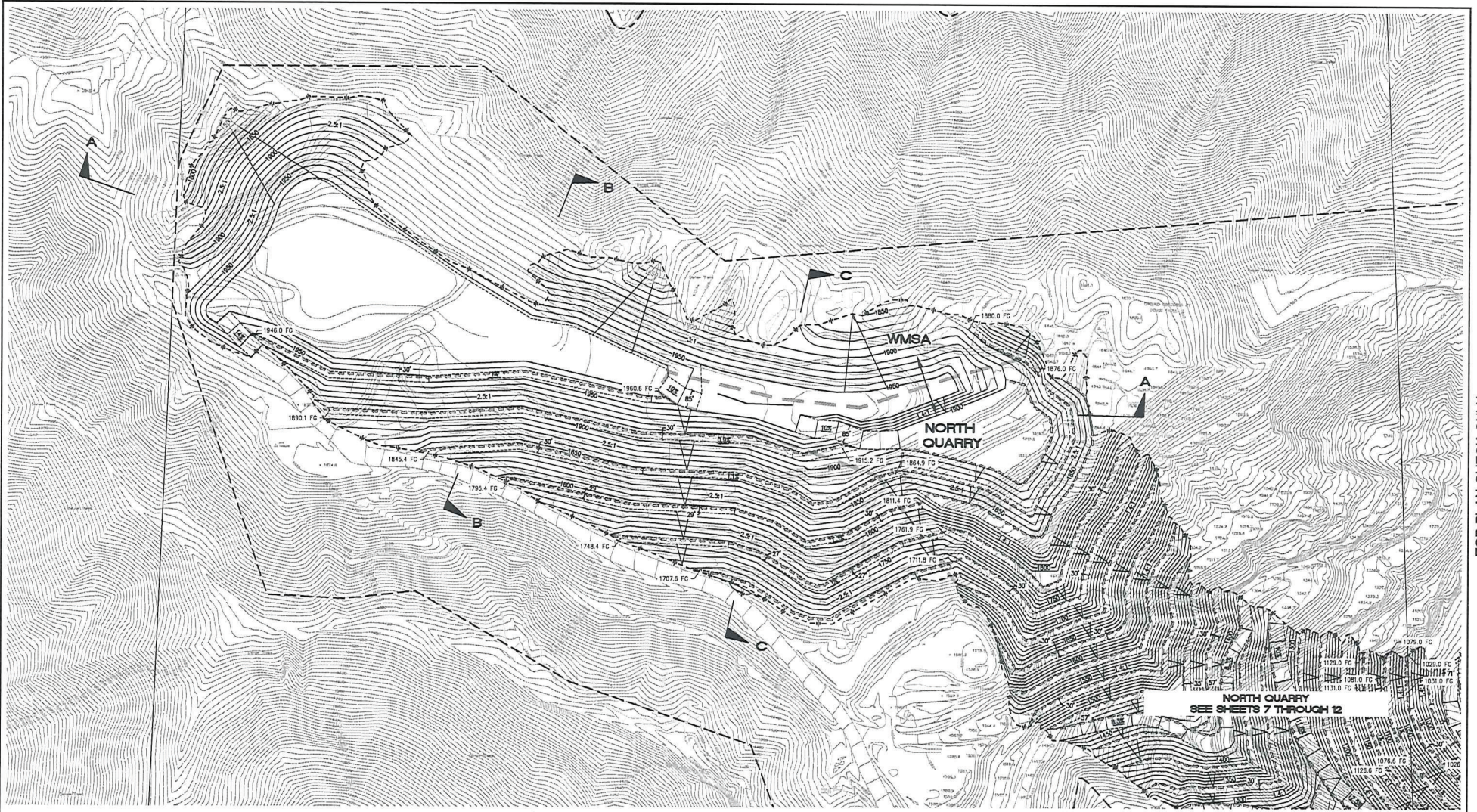
**RECLAMATION PLAN FOR:
PERMANENT QUARRY
WEST MATERIALS STORAGE AREA
PHASE 1**

| | | |
|------------|----------|-------|
| REVISION 1 | | SHEET |
| REVISION 2 | | 3 |
| REVISION 3 | CO. FILE | OF |
| | | 25 |

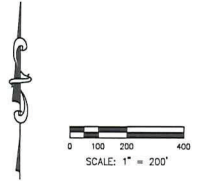
FOR PLAN CHECK ONLY

CHANG CONSULTANTS
(650) 852-0760

MAY 23, 2010



NORTH QUARRY
SEE SHEETS 7 THROUGH 12



OPERATOR

NAME: LEHIGH SOUTHWEST CEMENT COMPANY
 ADDRESS: 24001 STEVENS CREEK BLVD
 CUPERTINO, CA 95014
 TELEPHONE: 408-998-4000
 SHORT LEGAL: SEC 18 T7S R2W N20M W 1/4 & SE
 1/4 SEC 17 T7S R2W M20M
 A.P.M. 351-09-022, 351-10-005, 037, 038
 SITE ADDRESS: 24001 STEVENS CREEK BLVD,
 CUPERTINO, CA 95014

| SHEET INDEX | |
|-------------|--------------------------------------------------------|
| SHEET 1 | TITLE SHEET |
| SHEET 2 | LEGEND AND DETAILS |
| SHEET 3 | WEST MATERIALS STORAGE AREA PHASE 1 |
| SHEET 4 | WEST MATERIALS STORAGE AREA PHASES 2, 3, AND 4 |
| SHEET 5 | WEST MATERIALS STORAGE AREA PHASE 2 |
| SHEET 6 | WEST MATERIALS STORAGE AREA CROSS-SECTIONS |
| SHEET 7 | NORTH QUARRY PHASE 1 |
| SHEET 8 | NORTH QUARRY PHASE 2 |
| SHEET 9 | NORTH QUARRY PHASE 3 |
| SHEET 10 | NORTH QUARRY PHASE 4 |
| SHEET 11 | NORTH QUARRY PHASE 5 |
| SHEET 12 | PILE-BACKFILL TO SOUTH QUARRY |
| SHEET 13 | POST-BACKFILL TO SOUTH QUARRY |
| SHEET 14 | NORTH QUARRY CROSS-SECTIONS |
| SHEET 15 | CENTRAL MATERIALS STORAGE AREA PHASE 1 |
| SHEET 16 | CENTRAL MATERIALS STORAGE AREA PHASES 2, 3, AND 4 |
| SHEET 17 | CENTRAL MATERIALS STORAGE AREA PHASE 2 |
| SHEET 18 | CROSS-SECTIONS |
| SHEET 19 | SOUTH QUARRY PHASE 1 |
| SHEET 20 | SOUTH QUARRY PHASE 2 |
| SHEET 21 | SOUTH QUARRY PHASE 3 |
| SHEET 22 | SOUTH QUARRY PHASE 4 |
| SHEET 23 | SOUTH QUARRY PHASE 5 |
| SHEET 24 | SOUTH QUARRY CROSS-SECTIONS |
| SHEET 25 | TOPICAL STORAGE AREA PHASES 1, 2, 3 AND CROSS-SECTIONS |

Chang CONSULTANTS
 Civil Engineering-Hydrology-Hydraulics-Reclamation
 P.O. Box 1689 T. 925.622.2700
 Riverside Calif. P.C. CA 92507 F. 924.831.1422

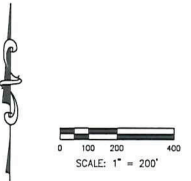
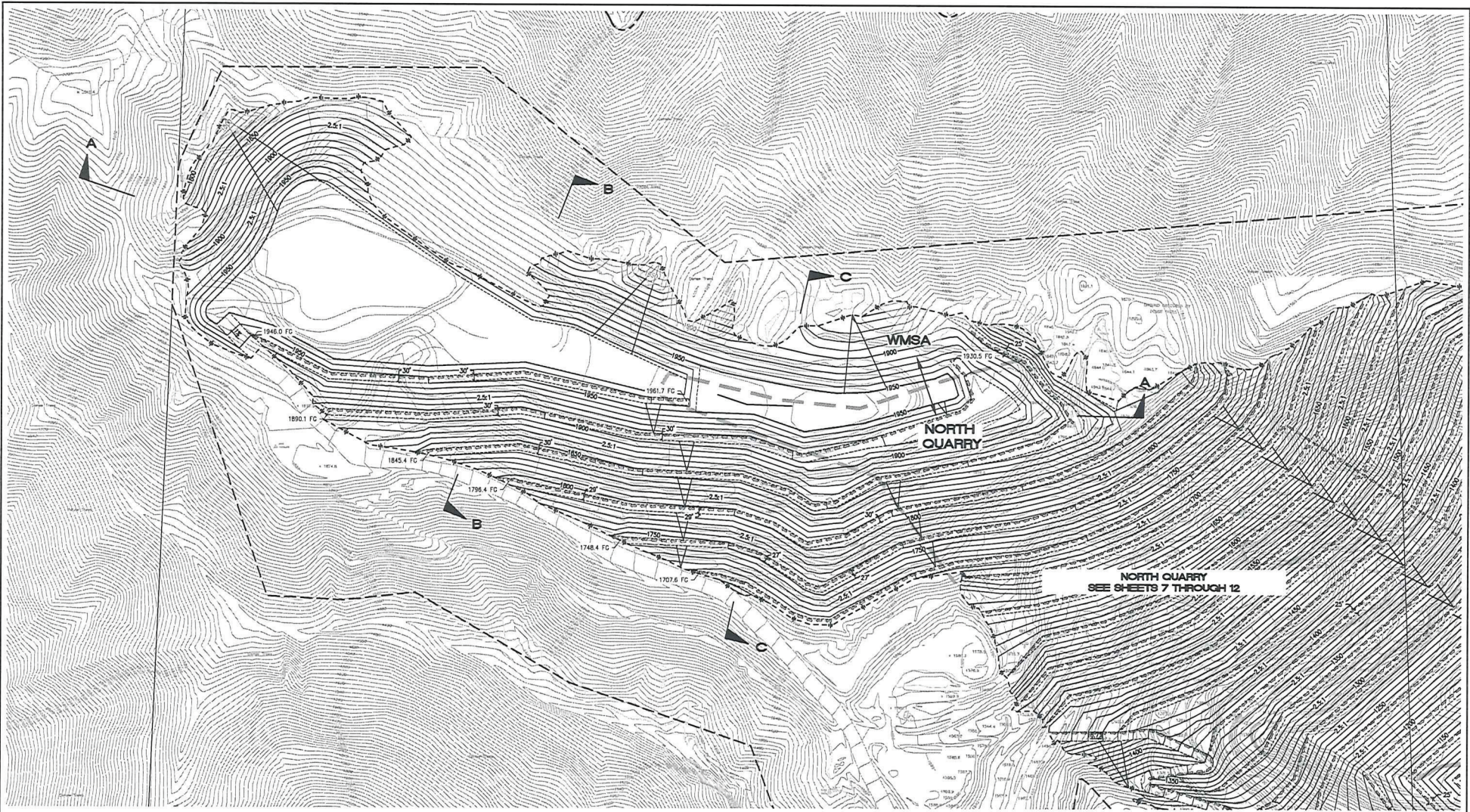
RECLAMATION PLAN FOR PERMANENT QUARRY WEST MATERIALS STORAGE AREA PHASES 2, 3, AND 4

| | | |
|------------|----------|-------|
| REVISION 1 | | SHEET |
| REVISION 2 | | 4 |
| REVISION 3 | CO. FILE | 25 |

FOR PLAN CHECK ONLY

CHANG CONSULTANTS
(858) 692-0750

MAY 23, 2010



OPERATOR

NAME: LEHIGH SOUTHWEST CEMENT COMPANY
 ADDRESS: 24001 STEVENS CREEK BLVD
 CLIPPERTON, CA 95014
 TELEPHONE: 408-996-4000
 SHORT LEGAL: SEC 18 T7S R2W N2S4 W 1/4 & SE
 1/4 SEC 17 T7S R2W N2S4
 A.P.N. 351-09-022; 351-10-005, 037, 038
 SITE ADDRESS: 24001 STEVENS CREEK BLVD.
 CLIPPERTON, CA 95014

| SHEET INDEX | |
|--------------------------------------------------------|-----------------------------------------------------------------|
| SHEET 1 TITLE SHEET | SHEET 14 CENTRAL MATERIALS STORAGE AREA CROSS-SECTIONS |
| SHEET 2 LEGEND AND DETAILS | SHEET 15 CENTRAL MATERIALS STORAGE AREA PHASES 2, 3, AND 4 |
| SHEET 3 WEST MATERIALS STORAGE AREA PHASES 1, 2, AND 4 | SHEET 16 CENTRAL MATERIALS STORAGE AREA PHASE 3 |
| SHEET 4 WEST MATERIALS STORAGE AREA PHASE 5 | SHEET 17 CENTRAL MATERIALS STORAGE AREA CROSS-SECTIONS |
| SHEET 5 WEST MATERIALS STORAGE AREA CROSS-SECTIONS | SHEET 18 SOUTH QUARRY PHASE 1 |
| SHEET 6 NORTH QUARRY PHASE 1 | SHEET 19 SOUTH QUARRY PHASE 2 |
| SHEET 7 NORTH QUARRY PHASE 2 | SHEET 20 SOUTH QUARRY PHASE 3 |
| SHEET 8 NORTH QUARRY PHASE 3 | SHEET 21 SOUTH QUARRY PHASE 4 |
| SHEET 9 NORTH QUARRY PHASE 4 | SHEET 22 SOUTH QUARRY PHASE 5 |
| SHEET 10 PRE-BACKFILL TO SOUTH QUARRY | SHEET 23 SOUTH QUARRY PHASE 5 - BACKFILL |
| SHEET 11 POST-BACKFILL TO SOUTH QUARRY | SHEET 24 SOUTH QUARRY CROSS-SECTIONS |
| SHEET 12 NORTH QUARRY CROSS-SECTIONS | SHEET 25 TOPSOIL STORAGE AREA PHASES 1, 2, 3 AND CROSS-SECTIONS |

Chang Consultants
 Civil Engineering-Hydrology-Geotechnical-Environmental
 P.O. Box 1499 T. 925.632.2700
 Rancho Santa Fe, CA 92087 F. 925.351.1422

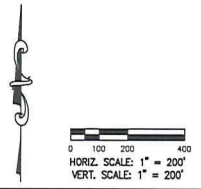
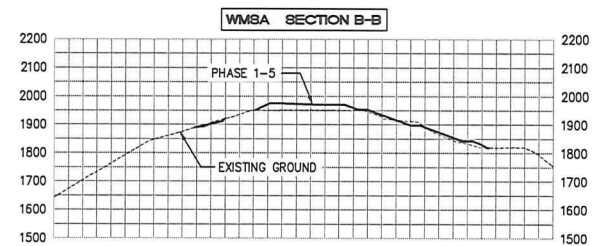
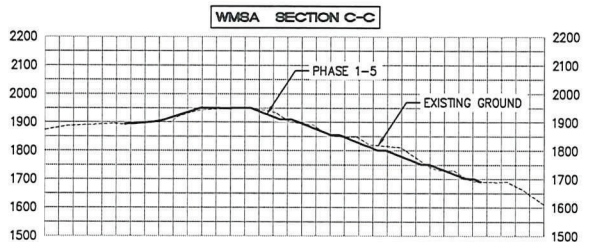
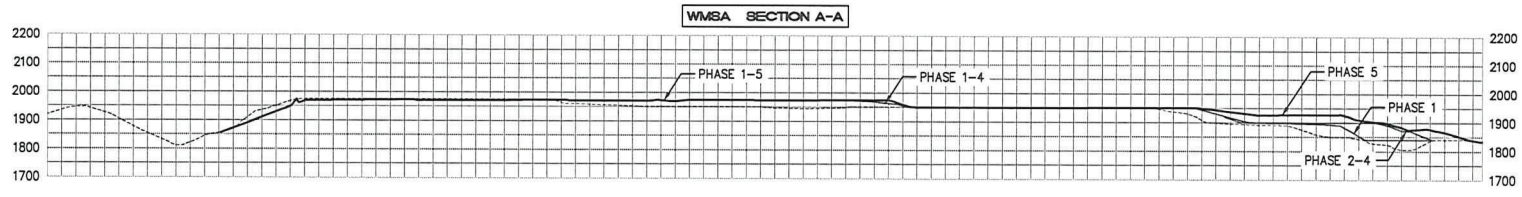
RECLAMATION PLAN FOR PERMANENT QUARRY WEST MATERIALS STORAGE AREA PHASE 5

| | | |
|------------|----------|---------|
| REVISION 1 | | SHEET 5 |
| REVISION 2 | | OF 25 |
| REVISION 3 | CO. FILE | |

FOR PLAN CHECK ONLY

CHANG CONSULTANTS
 (858) 692-0760

MAY 23, 2010

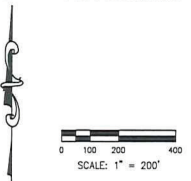
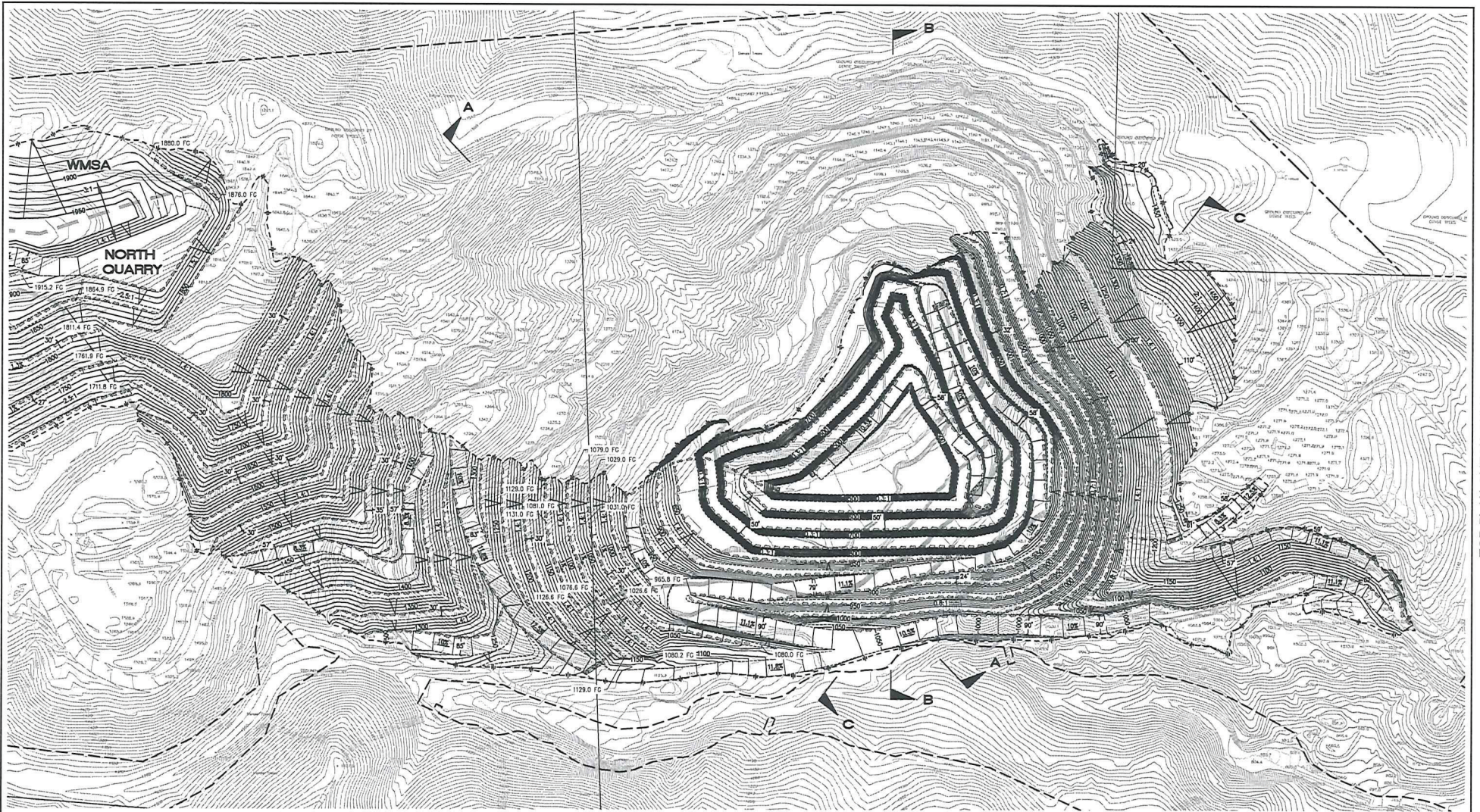


| OPERATOR | SHEET INDEX | |
|--------------------------------------------------------------------|--------------------------------------------------------|-----------------------------------------------------------------|
| NAME: LEMGH SOUTHWEST CEMENT COMPANY | SHEET 1 TITLE SHEET | SHEET 14 CENTRAL MATERIALS STORAGE AREA PHASE 1 |
| ADDRESS: 24001 STEVENS CREEK BLVD CLIPPERTON, CA 95014 | SHEET 2 LEGEND AND DETAILS | SHEET 15 CENTRAL MATERIALS STORAGE AREA PHASES 2, 3, AND 4 |
| TELEPHONE: 408-995-4000 | SHEET 3 WEST MATERIALS STORAGE AREA PHASE 1 | SHEET 16 CENTRAL MATERIALS STORAGE AREA PHASE 2 |
| SHORT LEGAL: SEC 18 T7S R2W MOB; W 1/4 & SE 1/4 SEC 17 T7S R2W MOB | SHEET 4 WEST MATERIALS STORAGE AREA PHASES 2, 3, AND 4 | SHEET 17 CENTRAL MATERIALS STORAGE AREA CROSS-SECTIONS |
| A.P.N. 351-09-022; 351-10-005, 037, 038 | SHEET 5 WEST MATERIALS STORAGE AREA PHASE 3 | SHEET 18 SOUTH QUARRY PHASE 1 |
| SITE ADDRESS: 24001 STEVENS CREEK BLVD. CLIPPERTON, CA 95014 | SHEET 6 WEST MATERIALS STORAGE AREA CROSS-SECTIONS | SHEET 19 SOUTH QUARRY PHASE 2 |
| | SHEET 7 NORTH QUARRY PHASE 1 | SHEET 20 SOUTH QUARRY PHASE 3 |
| | SHEET 8 NORTH QUARRY PHASE 2 | SHEET 21 SOUTH QUARRY PHASE 4 |
| | SHEET 9 SOUTH QUARRY PHASE 1 | SHEET 22 SOUTH QUARRY PHASE 5 |
| | SHEET 10 SOUTH QUARRY PHASE 2 | SHEET 23 SOUTH QUARRY PHASE 5 - BACKFILL |
| | SHEET 11 SOUTH QUARRY PHASE 3 | SHEET 24 SOUTH QUARRY CROSS-SECTIONS |
| | SHEET 12 SOUTH QUARRY PHASE 4 | SHEET 25 TYPICAL STORAGE AREA PHASES 1, 2, 3 AND CROSS-SECTIONS |
| | SHEET 13 SOUTH QUARRY PHASE 5 | |
| | SHEET 13A POST-BACKFILL TO SOUTH QUARRY | |
| | SHEET 13B NORTH QUARRY CROSS-SECTIONS | |

Chang Consultants
Civil Engineering, Hydrology, Hydraulics, Sedimentation
P.O. Box 9891 T: 908-822-0760
Florida State P.E. CA 12291 F: 908-822-1422

**RECLAMATION PLAN FOR:
PERMANENT QUARRY
WEST MATERIALS STORAGE AREA
CROSS-SECTIONS**

| | | |
|------------|----------|---------|
| REVISION 1 | | SHEET 6 |
| REVISION 2 | | OF 25 |
| REVISION 3 | CO. FILE | |



| OPERATOR | | SHEET INDEX | |
|---------------|---------------------------------------------------------|-------------|-------------------------------------------------------|
| NAME: | LEHIGH SOUTHWEST CEMENT COMPANY | SHEET 1 | TITLE SHEET |
| ADDRESS: | 24001 STEVENS CREEK BLVD CUPERTINO, CA 95014 | SHEET 2 | LEADING AND DETAILS |
| TELEPHONE: | 408-896-4000 | SHEET 3 | WEST MATERIALS STORAGE AREA PHASE 1 |
| SHORT LEGAL: | SEC 18 T7S 20W N03E, W 1/4 & SE 1/4 SEC 17 T7S 20W N03E | SHEET 4 | WEST MATERIALS STORAGE AREA PHASE 2 |
| A.P.N.: | 351-09-022; 351-10-005, 037, 038 | SHEET 5 | WEST MATERIALS STORAGE AREA PHASE 3 |
| SITE ADDRESS: | 24001 STEVENS CREEK BLVD. CUPERTINO, CA 95014 | SHEET 6 | WEST MATERIALS STORAGE AREA CROSS-SECTIONS |
| | | SHEET 7 | NORTH QUARRY PHASE 1 |
| | | SHEET 8 | NORTH QUARRY PHASE 2 |
| | | SHEET 9 | NORTH QUARRY PHASE 3 |
| | | SHEET 10 | NORTH QUARRY PHASE 4 |
| | | SHEET 11 | NORTH QUARRY PHASE 5 |
| | | SHEET 12 | PRE-BACKFILL TO SOUTH QUARRY |
| | | SHEET 13 | POST-BACKFILL TO SOUTH QUARRY |
| | | SHEET 14 | CENTRAL MATERIALS STORAGE AREA PHASE 1 |
| | | SHEET 15 | CENTRAL MATERIALS STORAGE AREA PHASE 2, 3, 4, 5 AND 6 |
| | | SHEET 16 | CENTRAL MATERIALS STORAGE AREA PHASE 2 |
| | | SHEET 17 | CENTRAL MATERIALS STORAGE AREA CROSS-SECTIONS |
| | | SHEET 18 | SOUTH QUARRY PHASE 1 |
| | | SHEET 19 | SOUTH QUARRY PHASE 2 |
| | | SHEET 20 | SOUTH QUARRY PHASE 3 |
| | | SHEET 21 | SOUTH QUARRY PHASE 4 |
| | | SHEET 22 | SOUTH QUARRY PHASE 5 |
| | | SHEET 23 | SOUTH QUARRY PHASE 6 - BACKFILL |
| | | SHEET 24 | SOUTH QUARRY CROSS-SECTIONS |
| | | SHEET 25 | SOUTH QUARRY PHASE 7 - BACKFILL |
| | | | PHASES 1, 2, 3 AND CROSS-SECTIONS |

Chang Consultants
 Civil Engineering, Hydrology, Hydraulics, Sedimentation
 P.O. Box 9899 T 950 852 0700
 Rancho Santa Fe, CA 92087 F 950 931 1402

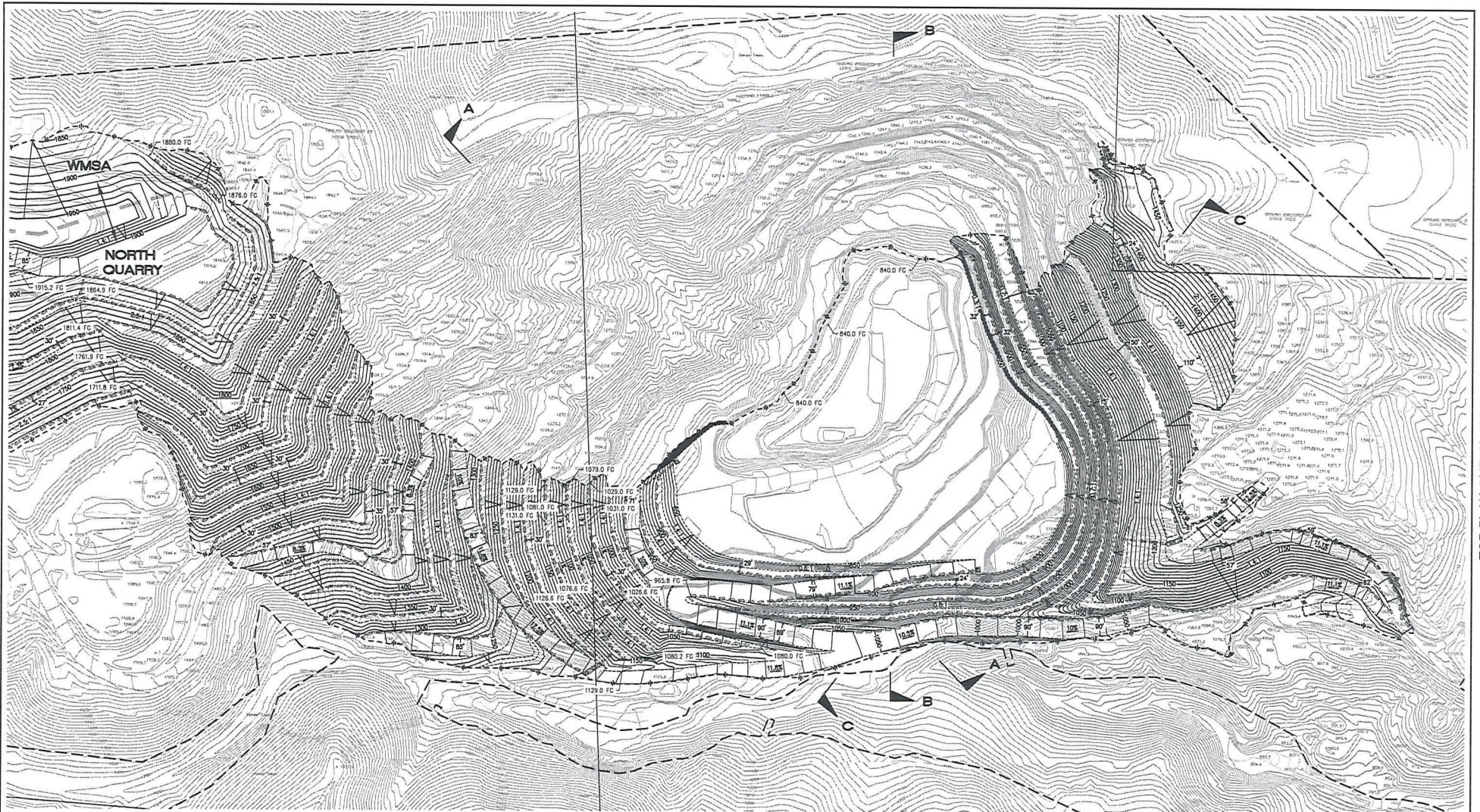
RECLAMATION PLAN FOR PERMANENTE QUARRY NORTH QUARRY PHASE 1

| | | |
|------------|----------|---------|
| REVISION 1 | | SHEET 7 |
| REVISION 2 | | OF 25 |
| REVISION 3 | CO. FILE | |

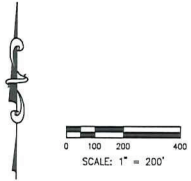
FOR PLAN CHECK ONLY

CHANG CONSULTANTS
(650) 952-0760

MAY 23, 2010



NOTE
 DIRECTION OF DRAINAGE ALONG PIT FLOOR AND BENCHES SURROUNDING PIT FLOOR CAN BE ALTERED DURING MINING AND RECLAMATION AS LONG AS THE DRAINAGE IS CONVEYED TO THE PIT FLOOR.



OPERATOR

NAME: LEHIGH SOUTHWEST CEMENT COMPANY
 ADDRESS: 24001 STEVENS CREEK BLVD
 CLIPPERTINO, CA 95014
 TELEPHONE: 408-998-4000
 SHORT LEGAL: SEC 18 T7S R2W N20M W 1/4 & SE 1/4 SEC 17 T7S R2W N20M
 A.P.N. 351-09-022, 351-10-005, 037, 038
 SITE ADDRESS: 24001 STEVENS CREEK BLVD,
 CLIPPERTINO, CA 95014

SHEET INDEX

| | | | |
|----------|-----------------------------------------------------------|----------|--------------------------------------------------------|
| SHEET 1 | TITLE SHEET | SHEET 14 | CENTRAL MATERIALS STORAGE AREA PHASE 1 |
| SHEET 2 | LEGEND AND DETAILS | SHEET 15 | CENTRAL MATERIALS STORAGE AREA PHASES 2, 3, AND 4 |
| SHEET 3 | WEST MATERIALS STORAGE AREA PHASES 1, 2, AND 4 | SHEET 16 | CENTRAL MATERIALS STORAGE AREA PHASE 2 |
| SHEET 4 | WEST MATERIALS STORAGE AREA PHASES 1, 2, AND 4 | SHEET 17 | CENTRAL MATERIALS STORAGE AREA CROSS-SECTIONS |
| SHEET 5 | WEST MATERIALS STORAGE AREA CROSS-SECTIONS | SHEET 18 | SOUTH QUARRY PHASE 1 |
| SHEET 6 | SOUTH QUARRY PHASE 1 | SHEET 19 | SOUTH QUARRY PHASE 2 |
| SHEET 7 | SOUTH QUARRY PHASE 2 | SHEET 20 | SOUTH QUARRY PHASE 3 |
| SHEET 8 | SOUTH QUARRY PHASE 3 | SHEET 21 | SOUTH QUARRY PHASE 4 |
| SHEET 9 | SOUTH QUARRY PHASE 4 | SHEET 22 | SOUTH QUARRY PHASE 5 |
| SHEET 10 | PRE-BACKFILL TO SOUTH QUARRY SOUTH QUARRY PHASE 1 | SHEET 23 | SOUTH QUARRY PHASE 5 - BACKFILL |
| SHEET 11 | PRE-BACKFILL TO SOUTH QUARRY SOUTH QUARRY PHASE 2 | SHEET 24 | SOUTH QUARRY CROSS-SECTIONS |
| SHEET 12 | PRE-BACKFILL TO SOUTH QUARRY SOUTH QUARRY CROSS-SECTIONS | SHEET 25 | TERRACE STORAGE AREA PHASES 1, 2, 3 AND CROSS-SECTIONS |
| SHEET 13 | POST-BACKFILL TO SOUTH QUARRY SOUTH QUARRY CROSS-SECTIONS | | |

Chang Consultants
 Civil Engineering-Hydraulic-Structural
 P.O. Box 1489 T. 925.621.7270
 Riverside Station P.O. CA 92507 F. 951.521.1422

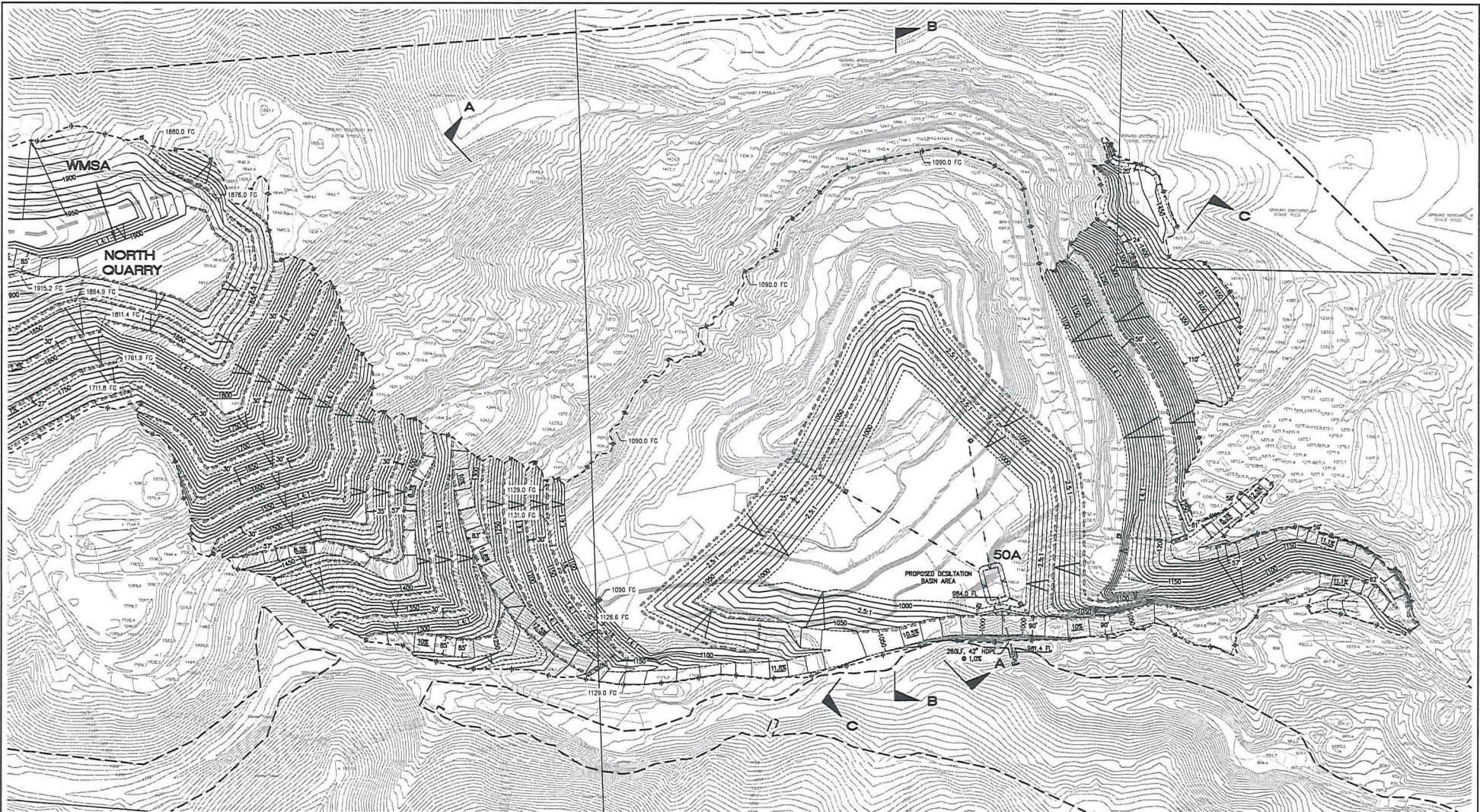
RECLAMATION PLAN FOR PERMANENT QUARRY NORTH QUARRY PHASE 2

| | | |
|------------|----------|---------|
| REVISION 1 | | SHEET 8 |
| REVISION 2 | | OF 25 |
| REVISION 3 | CO. FILE | |

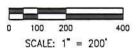
FOR PLAN CHECK ONLY

CHANG CONSULTANTS
 (858) 692-0760

MAY 23, 2010



NOTE:
 DIRECTION OF DRAINAGE ALONG PIT FLOOR AND BENCHES SURROUNDING PIT FLOOR CAN BE ALTERED DURING MINING AND RECLAMATION AS LONG AS THE DRAINAGE IS CONVEYED TO THE PIT FLOOR.



OPERATOR

NAME: LEHIGH SOUTHWEST CEMENT COMPANY
 ADDRESS: 24001 STEVENS CREEK BLVD
 CUPERTINO, CA 95014
 TELEPHONE: 408-998-4000
 SHORT LEGAL: SEC 18 T7S R2W MOB& W 1/4 & SE 1/4 SEC 17 T7S R2W MOB&
 A.P.N. 351-09-022; 351-10-005, 037, 038
 SITE ADDRESS: 24001 STEVENS CREEK BLVD.
 CUPERTINO, CA 95014

| SHEET INDEX | |
|---------------------------------------------|-----------------------------------------------------------|
| SHEET 1 TITLE SHEET | SHEET 14 CENTRAL MATERIALS STORAGE AREA PHASE 1 |
| SHEET 2 LEGEND AND DETAILS | SHEET 15 CENTRAL MATERIALS STORAGE AREA PHASE 2, 3, AND 4 |
| SHEET 3 WEST MATERIALS STORAGE AREA PHASE 1 | SHEET 16 CENTRAL MATERIALS STORAGE AREA PHASE 2 |
| SHEET 4 WEST MATERIALS STORAGE AREA PHASE 1 | SHEET 17 CENTRAL MATERIALS STORAGE AREA PHASE 2 |
| SHEET 5 WEST MATERIALS STORAGE AREA PHASE 1 | SHEET 18 SOUTH QUARRY PHASE 1 |
| SHEET 6 WEST MATERIALS STORAGE AREA PHASE 1 | SHEET 19 SOUTH QUARRY PHASE 2 |
| SHEET 7 CROSS-SECTIONS | SHEET 20 SOUTH QUARRY PHASE 3 |
| SHEET 8 SOUTH QUARRY PHASE 1 | SHEET 21 SOUTH QUARRY PHASE 4 |
| SHEET 9 SOUTH QUARRY PHASE 2 | SHEET 22 SOUTH QUARRY PHASE 5 - BACKFILL |
| SHEET 10 SOUTH QUARRY PHASE 3 | SHEET 23 SOUTH QUARRY PHASE 5 - BACKFILL |
| SHEET 11 SOUTH QUARRY PHASE 4 | SHEET 24 SOUTH QUARRY CROSS-SECTIONS |
| SHEET 12 PRE-ADRIAL TO SOUTH QUARRY | SHEET 25 SOUTH QUARRY CROSS-SECTIONS |
| SHEET 13 SOUTH QUARRY PHASE 5 | SHEET 26 SOUTH QUARRY CROSS-SECTIONS |

Chang Consultants
 Civil Engineering, Hydrology, Hydrogeology, and Surveying
 P.O. Box 3450 T 916.432.2700
 Rancho Santa Fe, CA 92087 F 916.432.1422

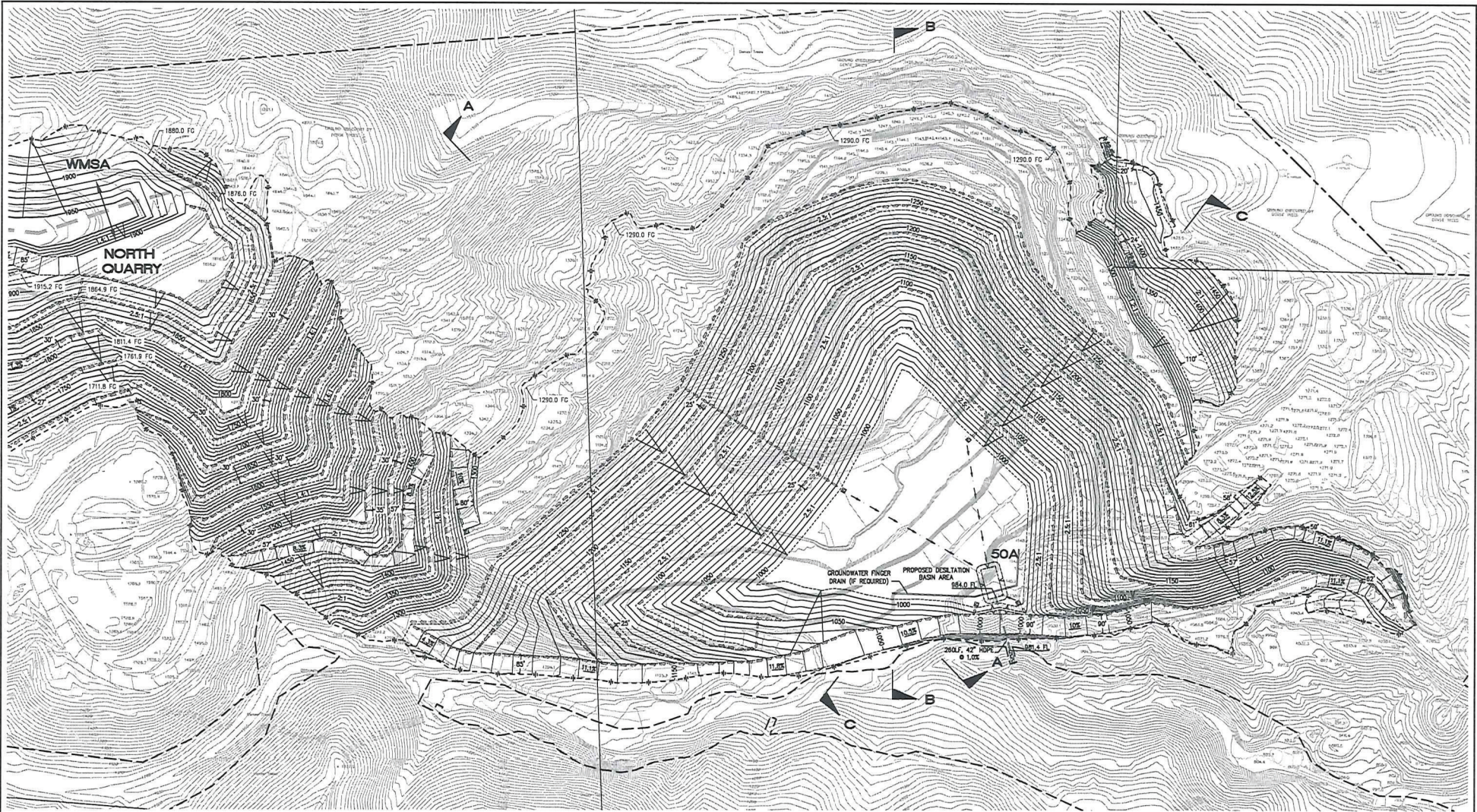
**RECLAMATION PLAN FOR:
 PERMANENTE QUARRY
 NORTH QUARRY
 PHASE 3**

| | | |
|------------|----------|---------|
| REVISION 1 | | SHEET 9 |
| REVISION 2 | | OF 25 |
| REVISION 3 | CO. FILE | |

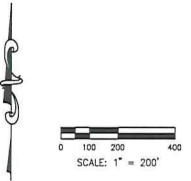
FOR PLAN CHECK ONLY

CHANG CONSULTANTS
 (916) 692-0760

MAY 23, 2010



NOTE:
 DIRECTION OF DRAINAGE ALONG PIT FLOOR AND BENCHES SURROUNDING PIT FLOOR CAN BE ALTERED DURING MINING AND RECLAMATION AS LONG AS THE DRAINAGE IS CONVEYED TO THE PIT FLOOR.



OPERATOR

NAME: LEHIGH SOUTHWEST CEMENT COMPANY
 ADDRESS: 24001 STEVENS CREEK BLVD
 CLIPPERTING, CA 95014
 TELEPHONE: 408-996-4000
 SHORT LEGAL: SEC 18 T7S R2W M20M. W 1/4 & SE 1/4 SEC 17 T7S R2W M20M
 A.P.N. 351-09-022, 351-10-005, 037, 038
 SITE ADDRESS: 24001 STEVENS CREEK BLVD.
 CLIPPERTING, CA 95014

SHEET INDEX

| | | | |
|----------|-----------------------------------------------------------|----------|-------------------------------------------------------|
| SHEET 1 | TITLE SHEET | SHEET 14 | CENTRAL MATERIALS STORAGE AREA PHASE 1 |
| SHEET 2 | LEIGH AND BETHES MATERIALS STORAGE AREA PHASE 2, 3, AND 4 | SHEET 15 | CENTRAL MATERIALS STORAGE AREA PHASE 2, 3, AND 4 |
| SHEET 3 | LEIGH AND BETHES MATERIALS STORAGE AREA PHASE 2, 3, AND 4 | SHEET 16 | CENTRAL MATERIALS STORAGE AREA PHASE 2 |
| SHEET 4 | LEIGH AND BETHES MATERIALS STORAGE AREA PHASE 2 | SHEET 17 | CENTRAL MATERIALS STORAGE AREA CROSS-SECTIONS |
| SHEET 5 | LEIGH AND BETHES MATERIALS STORAGE AREA PHASE 2 | SHEET 18 | SOUTH QUARRY PHASE 1 |
| SHEET 6 | LEIGH AND BETHES MATERIALS STORAGE AREA PHASE 2 | SHEET 19 | SOUTH QUARRY PHASE 2 |
| SHEET 7 | LEIGH AND BETHES MATERIALS STORAGE AREA PHASE 2 | SHEET 20 | SOUTH QUARRY PHASE 3 |
| SHEET 8 | LEIGH AND BETHES MATERIALS STORAGE AREA PHASE 2 | SHEET 21 | SOUTH QUARRY PHASE 4 |
| SHEET 9 | LEIGH AND BETHES MATERIALS STORAGE AREA PHASE 2 | SHEET 22 | SOUTH QUARRY PHASE 5 |
| SHEET 10 | LEIGH AND BETHES MATERIALS STORAGE AREA PHASE 2 | SHEET 23 | SOUTH QUARRY PHASE 5 - BACKFILL |
| SHEET 11 | LEIGH AND BETHES MATERIALS STORAGE AREA PHASE 2 | SHEET 24 | SOUTH QUARRY CROSS-SECTIONS |
| SHEET 12 | LEIGH AND BETHES MATERIALS STORAGE AREA PHASE 2 | SHEET 25 | TOPICAL STORAGE AREA PHASE 1, 2, 3 AND CROSS-SECTIONS |
| SHEET 13 | LEIGH AND BETHES MATERIALS STORAGE AREA PHASE 2 | | |

Chang Consultants
 Civil Engineering, Hydrology, Hydraulic, Geotechnical
 P.O. Box 9499 T: 925.832.2100
 Alameda, Calif. P.O. CA 94721 F: 925.832.1422

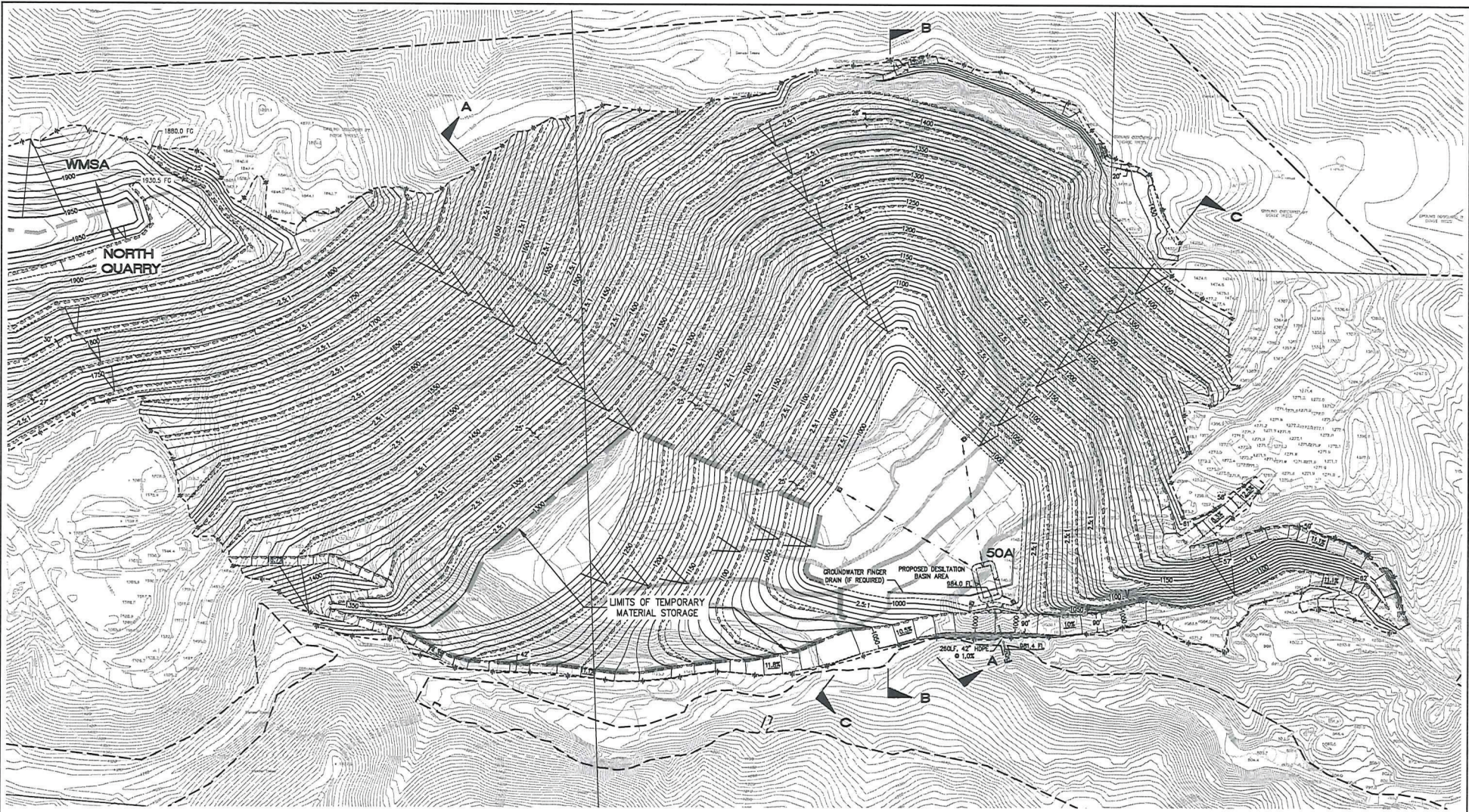
RECLAMATION PLAN FOR PERMANENT QUARRY NORTH QUARRY PHASE 4

| | | |
|------------|----------|----------------|
| REVISION 1 | | SHEET 10 OF 25 |
| REVISION 2 | | |
| REVISION 3 | CO. FILE | |

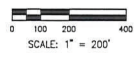
FOR PLAN CHECK ONLY

CHANG CONSULTANTS
 (858) 692-0760

MAY 23, 2010



NOTE:
 DIRECTION OF DRAINAGE ALONG PIT FLOOR AND BENCHES SURROUNDING PIT FLOOR CAN BE ALTERED DURING MINING AND RECLAMATION AS LONG AS THE DRAINAGE IS CONVEYED TO THE PIT FLOOR.



OPERATOR

NAME: LEHIGH SOUTHWEST CEMENT COMPANY
 ADDRESS: 24001 STEVENS CREEK BLVD
 CLIPPERTING, CA 95014
 TELEPHONE: 408-996-4000
 SHORT LEGAL: SEC 18 T7S R2W N28M W 1/4 & SE 1/4 SEC 17 T7S R2W N28M
 A.P.N. 351-09-022, 351-10-005, 037, 038
 SITE ADDRESS: 24001 STEVENS CREEK BLVD, CLIPPERTING, CA 95014

SHEET INDEX

| | |
|-----------------------------------------------------------|--------------------------------------------------------------------|
| SHEET 1 TITLE SHEET | SHEET 14 CENTRAL MATERIALS STORAGE AREA PHASE 1 |
| SHEET 2 LIMB AND BENCHES | SHEET 15 CENTRAL MATERIALS STORAGE AREA PHASES 2, 3, AND 4 |
| SHEET 3 WEST MATERIALS STORAGE AREA PHASES 2, 3, AND 4 | SHEET 16 CENTRAL MATERIALS STORAGE AREA PHASE 2 |
| SHEET 4 WEST MATERIALS STORAGE AREA PHASE 2 | SHEET 17 CENTRAL MATERIALS STORAGE AREA CROSS-SECTIONS |
| SHEET 5 WEST MATERIALS STORAGE AREA PHASE 3 | SHEET 18 SOUTH QUARRY PHASE 1 |
| SHEET 6 WEST MATERIALS STORAGE AREA PHASE 3 | SHEET 19 SOUTH QUARRY PHASE 2 |
| SHEET 7 SOUTH QUARRY PHASE 1 | SHEET 20 SOUTH QUARRY PHASE 3 |
| SHEET 8 SOUTH QUARRY PHASE 2 | SHEET 21 SOUTH QUARRY PHASE 4 |
| SHEET 9 SOUTH QUARRY PHASE 3 | SHEET 22 SOUTH QUARRY PHASE 5 - BACKFILL |
| SHEET 10 SOUTH QUARRY PHASE 4 | SHEET 23 SOUTH QUARRY PHASE 5 - BACKFILL |
| SHEET 11 PRE-BACKFILL TO SOUTH QUARRY | SHEET 24 SOUTH QUARRY CROSS-SECTIONS |
| SHEET 12 POST-BACKFILL TO SOUTH QUARRY | SHEET 25 TOPICAL STORAGE AREA PHASES 1, 2, 3 AND CROSS-SECTIONS |
| SHEET 13 SOUTH QUARRY CROSS-SECTIONS | |

Chang CONSULTANTS
 Civil Engineering, Hydrology, Hydraulics, Geotechnical
 P.O. Box 4009 T. 926.622.2700
 Riverside, Calif. P.O. CA 92507 F. 926.622.1422

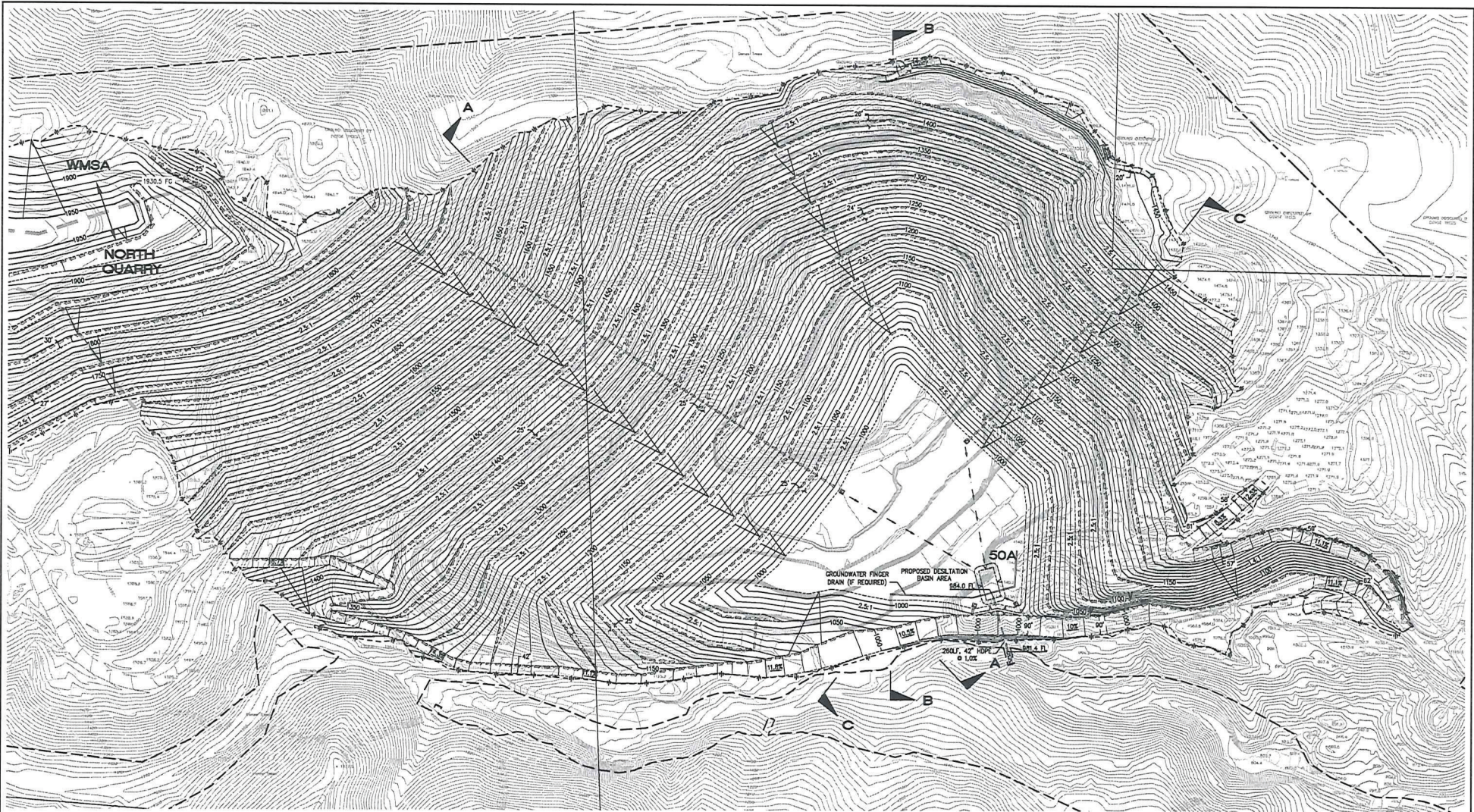
RECLAMATION PLAN FOR PERMANENT QUARRY
NORTH QUARRY PHASE 5
PRE-BACKFILL TO SOUTH QUARRY

| | |
|------------|----------|
| REVISION 1 | SHEET 01 |
| REVISION 2 | OF 25 |
| REVISION 3 | CO. FILE |

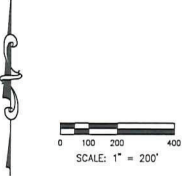
FOR PLAN CHECK ONLY

CHANG CONSULTANTS
 (658) 692-0760

MAY 23, 2010



NOTE:
DIRECTION OF DRAINAGE ALONG PIT FLOOR AND BENCHES SURROUNDING PIT FLOOR CAN BE ALTERED DURING MINING AND RECLAMATION AS LONG AS THE DRAINAGE IS CONVEYED TO THE PIT FLOOR.



| OPERATOR | |
|---------------|----------------------------------------------------------|
| NAME: | LEHIGH SOUTHWEST CEMENT COMPANY |
| ADDRESS: | 24001 STEVENS CREEK BLVD CLIPPERTON, CA 95014 |
| TELEPHONE: | 408-998-4000 |
| SHORT LEGAL: | SEC 18 T7S R2W M2B, W 1/4 & SE 1/4 SEC 17 T7S R2W M2B |
| A.P.N.: | 351-09-022; 351-10-005, 037, 038 |
| SITE ADDRESS: | 24001 STEVENS CREEK BLVD, CLIPPERTON, CA 95014 |

| SHEET INDEX | |
|-------------|------------------------------------------------------|
| SHEET 1 | TITLE SHEET |
| SHEET 2 | LEACH AND DETAILS |
| SHEET 3 | SOUTH QUARRY PHASE 1 |
| SHEET 4 | SOUTH QUARRY PHASE 2 |
| SHEET 5 | SOUTH QUARRY PHASE 3 |
| SHEET 6 | SOUTH QUARRY PHASE 4 |
| SHEET 7 | SOUTH QUARRY PHASE 5 |
| SHEET 8 | POST-BACKFILL TO SOUTH QUARRY |
| SHEET 9 | CROSS-SECTIONS |
| SHEET 10 | CROSS-SECTIONS |
| SHEET 11 | CROSS-SECTIONS |
| SHEET 12 | CROSS-SECTIONS |
| SHEET 13 | CROSS-SECTIONS |
| SHEET 14 | CENTRAL MATERIALS STORAGE AREA PHASES 1, 2, 3, AND 4 |
| SHEET 15 | CENTRAL MATERIALS STORAGE AREA PHASE 1 |
| SHEET 16 | CENTRAL MATERIALS STORAGE AREA PHASE 2 |
| SHEET 17 | CENTRAL MATERIALS STORAGE AREA PHASE 3 |
| SHEET 18 | CENTRAL MATERIALS STORAGE AREA PHASE 4 |
| SHEET 19 | CENTRAL MATERIALS STORAGE AREA PHASE 5 |
| SHEET 20 | CENTRAL MATERIALS STORAGE AREA PHASE 6 |
| SHEET 21 | CENTRAL MATERIALS STORAGE AREA PHASE 7 |
| SHEET 22 | CENTRAL MATERIALS STORAGE AREA PHASE 8 |
| SHEET 23 | CENTRAL MATERIALS STORAGE AREA PHASE 9 |
| SHEET 24 | CENTRAL MATERIALS STORAGE AREA PHASE 10 |
| SHEET 25 | CENTRAL MATERIALS STORAGE AREA PHASE 11 |

Chang Consultants
Civil Engineering-Hydrology-Hydraulics-Reclamation
P.O. Box 9889 T. 928.822.7270
Folsom, CA 95620 F. 928.822.1422

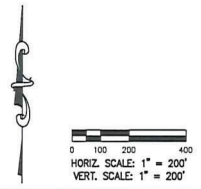
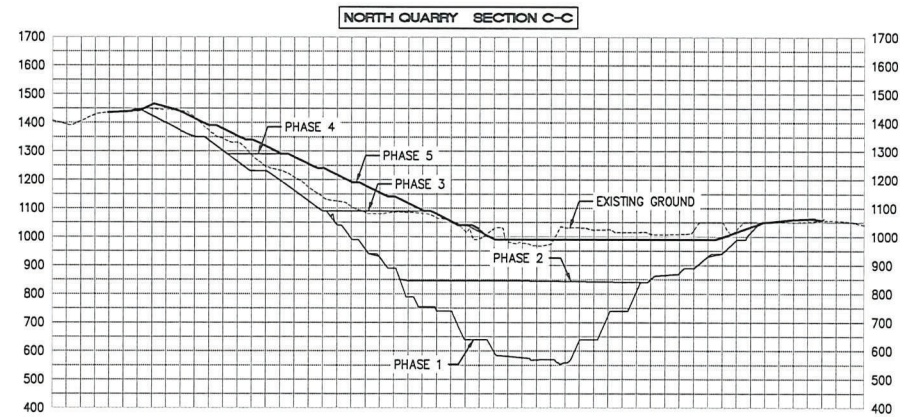
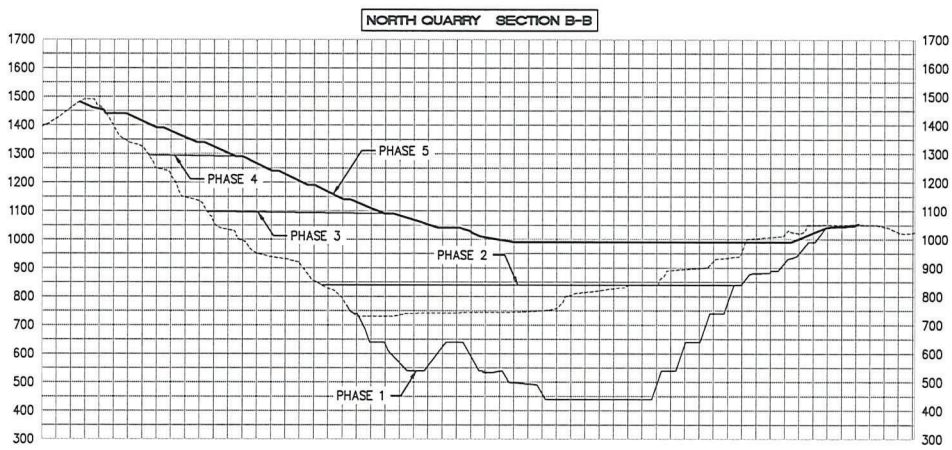
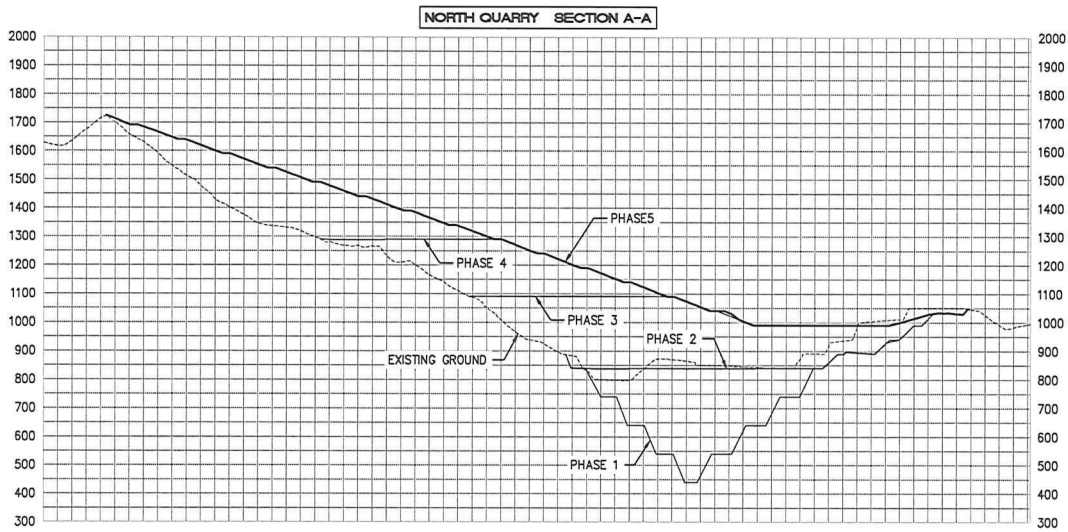
RECLAMATION PLAN FOR PERMANENT QUARRY
NORTH QUARRY PHASE 5
POST-BACKFILL TO SOUTH QUARRY

| | |
|------------|----------|
| REVISION 1 | SHEET 12 |
| REVISION 2 | OF 25 |
| REVISION 3 | CO. FILE |

FOR PLAN CHECK ONLY

CHANG CONSULTANTS
(858) 892-0760

MAY 23, 2010



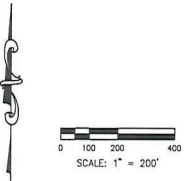
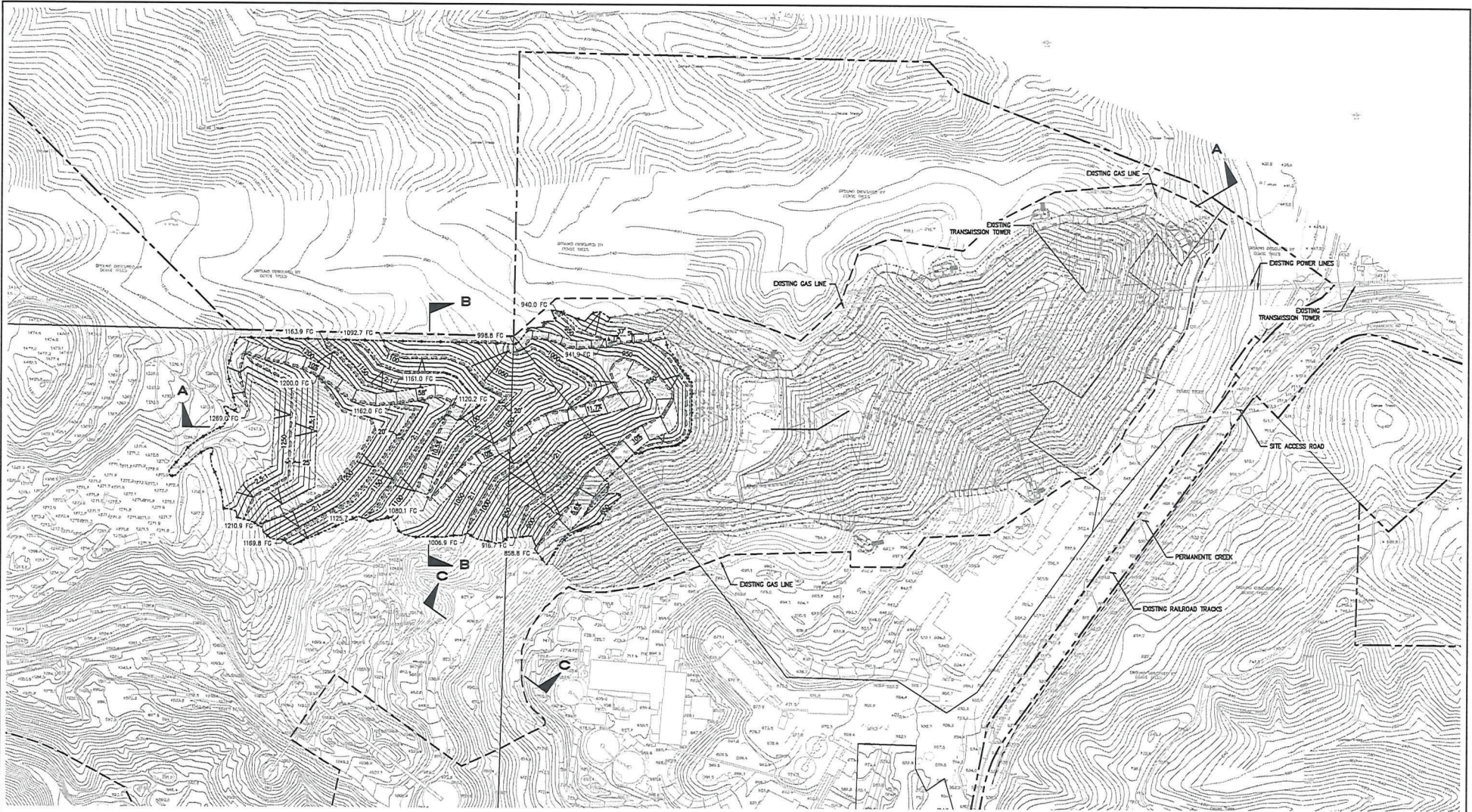
| OPERATOR | | SHEET INDEX | | Chang Consultants Civil Engineering, Hydrology, Hydraulics, and Geotechnical | |
|---------------|------------------------------------------------------------|-------------|-------------------------------|---------------------------------------------------------------------------------|--------------------------------------------------------|
| NAME: | LEHIGH SOUTHWEST CEMENT COMPANY | SHEET 1 | TITLE SHEET | SHEET 14 | CENTRAL MATERIALS STORAGE AREA PHASE 1 |
| ADDRESS: | 24001 STEVENS CREEK BLVD CUPERTINO, CA 95014 | SHEET 2 | LEACHING AND SETTLING | SHEET 15 | CENTRAL MATERIALS STORAGE AREA PHASES 2, 3, 4 AND 4 |
| TELEPHONE: | 408-896-4000 | SHEET 3 | NORTH QUARRY PHASE 1 | SHEET 16 | CENTRAL MATERIALS STORAGE AREA PHASE 2 |
| SHORT LEGAL: | SEC. 18 T7S R2W M20M. W 1/4 & SE 1/4 SEC. 17 T7S R2W M20M. | SHEET 4 | NORTH QUARRY PHASE 2 | SHEET 17 | CENTRAL MATERIALS STORAGE AREA CROSS-SECTIONS |
| A.P.N.: | 351-09-022; 351-10-005, 037, 038 | SHEET 5 | NORTH QUARRY PHASE 3 | SHEET 18 | SOUTH QUARRY PHASE 1 |
| SITE ADDRESS: | 24001 STEVENS CREEK BLVD. CUPERTINO, CA 95014 | SHEET 6 | NORTH QUARRY PHASE 4 | SHEET 19 | SOUTH QUARRY PHASE 2 |
| | | SHEET 7 | NORTH QUARRY PHASE 5 | SHEET 20 | SOUTH QUARRY PHASE 3 |
| | | SHEET 8 | PRE-BACKFILL TO SOUTH QUARRY | SHEET 21 | SOUTH QUARRY PHASE 4 |
| | | SHEET 9 | POST-BACKFILL TO SOUTH QUARRY | SHEET 22 | SOUTH QUARRY PHASE 5 |
| | | SHEET 10 | CROSS-SECTIONS | SHEET 23 | SOUTH QUARRY PHASE 5 - BACKFILL |
| | | SHEET 11 | PHASE 1 | SHEET 24 | SOUTH QUARRY CROSS-SECTIONS |
| | | SHEET 12 | PHASE 2 | SHEET 25 | SPECIAL STORAGE AREA PHASES 1, 2, 3 AND CROSS-SECTIONS |
| | | SHEET 13 | PHASE 3 | | |

**RECLAMATION PLAN FOR
PERMANENT QUARRY
NORTH QUARRY
CROSS-SECTIONS**

| | | |
|------------|----------|-------------------------|
| REVISION 1 | | SHEET 13 OF 25 |
| REVISION 2 | | |
| REVISION 3 | CO. FILE | |

FOR PLAN CHECK ONLY

CHANG CONSULTANTS
(650) 652-0760



OPERATOR

NAME: LEHIGH SOUTHWEST CEMENT COMPANY
 ADDRESS: 24001 STEVENS CREEK BLVD
 CLIPPERTON, CA 95014
 TELEPHONE: 408-996-4000
 SHORT LEGAL: SEC 18 T7S R2W M2SB, W 1/4 & SE
 1/4 SEC 17 T7S R2W M2SB
 A.P.N. 351-09-022, 351-10-035, 037, 038
 SITE ADDRESS: 24001 STEVENS CREEK BLVD,
 CLIPPERTON, CA 95014

SHEET INDEX

| | | | |
|----------|-------------------------------|----------|-----------------------------------------------------|
| SHEET 1 | TITLE SHEET | SHEET 14 | CENTRAL MATERIALS STORAGE AREA PHASE 1 |
| SHEET 2 | LEGEND AND DETAILS | SHEET 15 | CENTRAL MATERIALS STORAGE AREA PHASES 2, 3, 4 AND 4 |
| SHEET 3 | NORTH QUARRY PHASE 1 | SHEET 16 | CENTRAL MATERIALS STORAGE AREA PHASE 2 |
| SHEET 4 | NORTH QUARRY PHASE 2 | SHEET 17 | CENTRAL MATERIALS STORAGE AREA PHASE 3 |
| SHEET 5 | NORTH QUARRY PHASE 3 | SHEET 18 | CROSS-SECTIONS |
| SHEET 6 | NORTH QUARRY PHASE 4 | SHEET 19 | SOUTH QUARRY PHASE 1 |
| SHEET 7 | PRE-BACKFILL TO SOUTH QUARRY | SHEET 20 | SOUTH QUARRY PHASE 2 |
| SHEET 8 | POST-BACKFILL TO SOUTH QUARRY | SHEET 21 | SOUTH QUARRY PHASE 3 |
| SHEET 9 | CROSS-SECTIONS | SHEET 22 | SOUTH QUARRY PHASE 4 |
| SHEET 10 | CROSS-SECTIONS | SHEET 23 | SOUTH QUARRY PHASE 5 - BACKFILL |
| SHEET 11 | CROSS-SECTIONS | SHEET 24 | SOUTH QUARRY PHASES 1, 2, 3 AND CROSS-SECTIONS |
| SHEET 12 | CROSS-SECTIONS | SHEET 25 | |

Chang Consultants
 Civil Engineering/Geotechnical/Hydrology/Environmental
 P.O. Box 9499 T 925 432-2763
 Bunchgrass Blvd. # 1000 CA 92591 F 951 852-1482

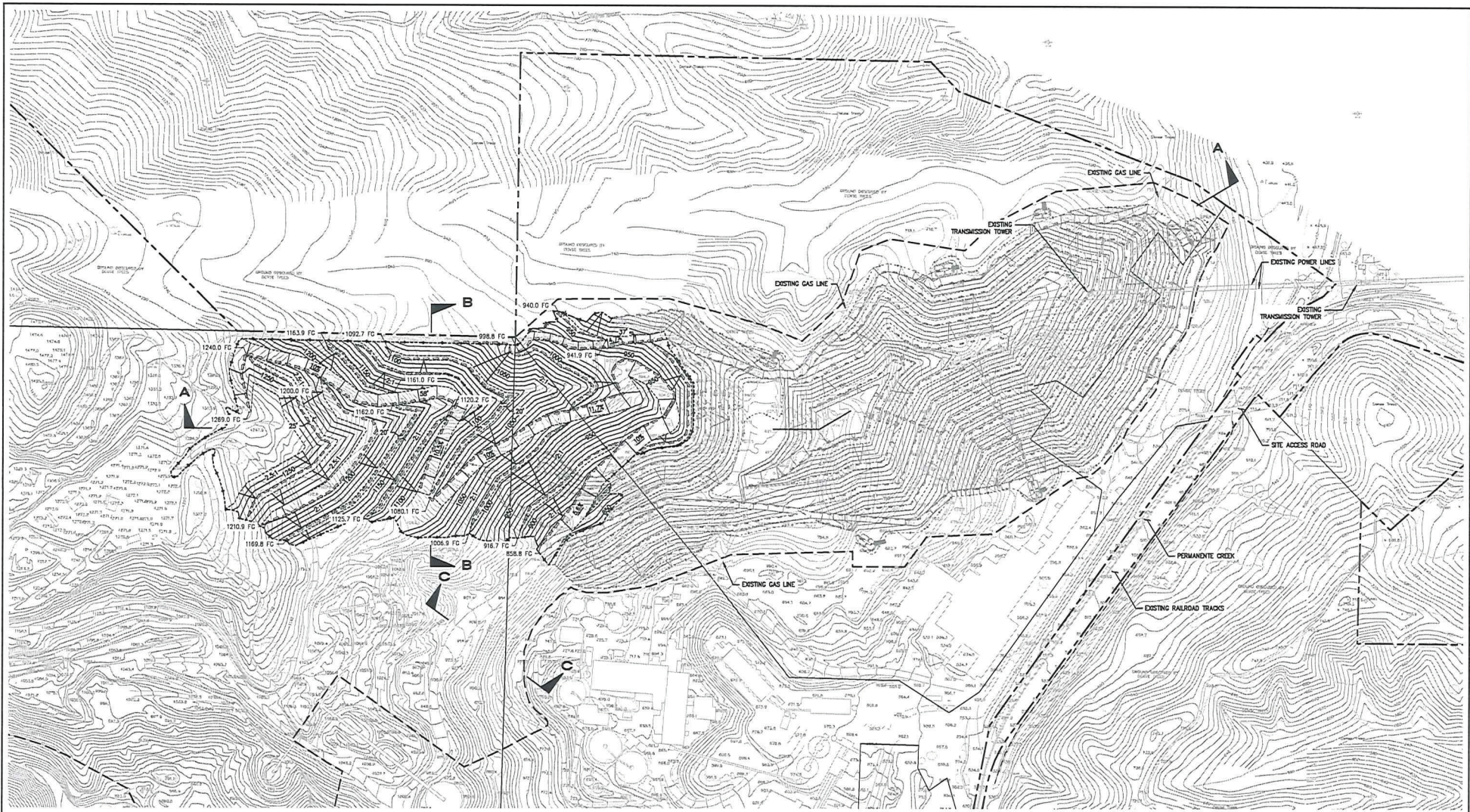
**RECLAMATION PLAN FOR:
 PERMANENTE QUARRY
 CENTRAL MATERIALS STORAGE AREA
 PHASE 1**

| | | | |
|------------|----------|-------|----|
| REVISION 1 | | SHEET | 14 |
| REVISION 2 | | OF | 25 |
| REVISION 3 | CO. FILE | | |

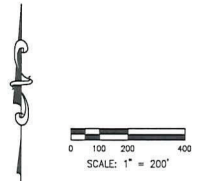
FOR PLAN CHECK ONLY

CHANG CONSULTANTS
 (650) 692-0760

MAY 23, 2010



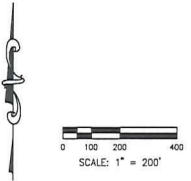
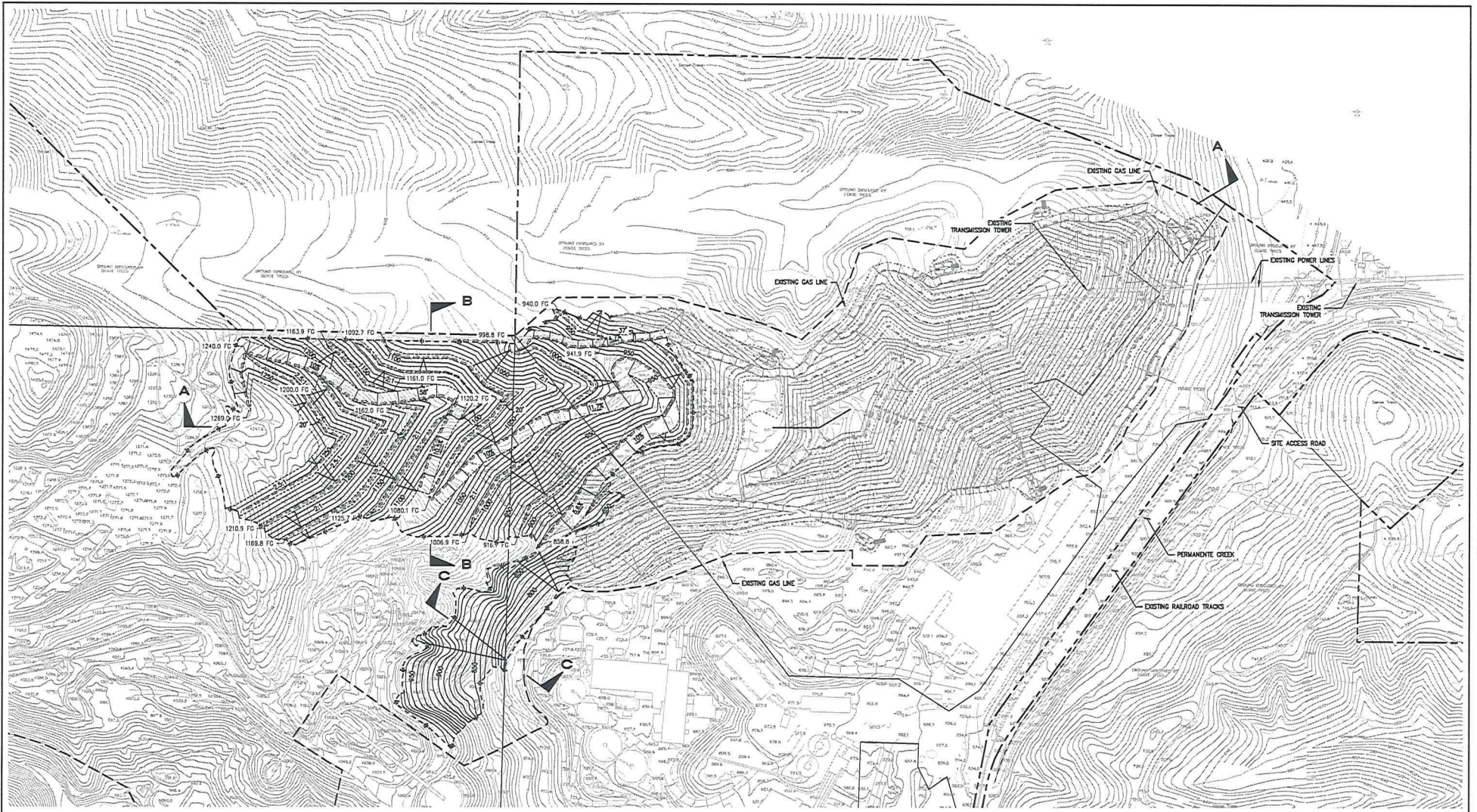
FOR PLAN CHECK ONLY



| | | | | | |
|----------------------------------------------------------------------------------------------------------------------------------------------------------------------------------------------------------------------------------------------------------------------------------------------------------------------------------------------------------|--|------------------------------------------------------------------------------------------------------------------------------------------------------------------------------------------------------------------------------------------------------------------------------------------------------------------------------------------------------------------------------------------------------------------------------------------------------------------------------------------------------------------------------------------------------------------------------------------------------------------------------------------------------------------------------------------------------------------------------------------------------------------------------------------------------------------------------------------------------------------------------------------------------------------------------------------------------------------------------------------------------------------------------------------------------------------------------------------------------------------------------------------------------------------------------------------------------------------------------------------------------------------------------------------------|--|-----------------------------------------------------|--|
| OPERATOR | | SHEET INDEX | | | |
| NAME: LESHG SOUTHWEST CEMENT COMPANY ADDRESS: 24001 STEVENS CREEK BLVD CLIPPERTON, CA 95014 TELEPHONE: 408-996-4000 SHORT LEGAL: SEC 18 T7S R2W M2B, W 1/4 & SE 1/4 SEC 17 T7S R2W M2B A.P.N.: 351-09-022, 351-10-005, 037, 038 SITE ADDRESS: 24001 STEVENS CREEK BLVD, CLIPPERTON, CA 95014 | | SHEET 1 TITLE SHEET SHEET 2 LEGEND AND DETAILS SHEET 3 WEST MATERIALS STORAGE AREA PHASE 1, 2, 3, AND 4 SHEET 4 WEST MATERIALS STORAGE AREA PHASE 2 SHEET 5 WEST MATERIALS STORAGE AREA PHASE 3 SHEET 6 WEST MATERIALS STORAGE AREA CROSS-SECTIONS SHEET 7 SOUTH QUARRY PHASE 1 SHEET 8 SOUTH QUARRY PHASE 2 SHEET 9 SOUTH QUARRY PHASE 3 SHEET 10 SOUTH QUARRY PHASE 4 SHEET 11 SOUTH QUARRY PHASE 5 SHEET 12 PRE-BACKFILL TO SOUTH QUARRY PHASE 1-5 SHEET 13 POST-BACKFILL TO SOUTH QUARRY PHASE CROSS-SECTIONS SHEET 14 CENTRAL MATERIALS STORAGE AREA PHASE 1 SHEET 15 CENTRAL MATERIALS STORAGE AREA PHASES 2, 3, AND 4 SHEET 16 CENTRAL MATERIALS STORAGE AREA PHASE 2 SHEET 17 CENTRAL MATERIALS STORAGE AREA CROSS-SECTIONS SHEET 18 SOUTH QUARRY PHASE 1 SHEET 19 SOUTH QUARRY PHASE 2 SHEET 20 SOUTH QUARRY PHASE 3 SHEET 21 SOUTH QUARRY PHASE 4 SHEET 22 SOUTH QUARRY PHASE 5 SHEET 23 SOUTH QUARRY PHASE 5 - BACKFILL SHEET 24 SOUTH QUARRY CROSS-SECTIONS SHEET 25 TOPICAL STORAGE AREA PHASES 1, 2, 3 AND CROSS-SECTIONS | | | |
| REVISION 1 REVISION 2 REVISION 3 | | CO. FILE | | SHEET 15 OF 25 | |

CHANG CONSULTANTS
(858) 692-0760

MAY 23, 2010

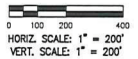
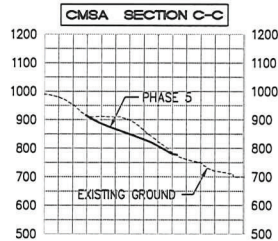
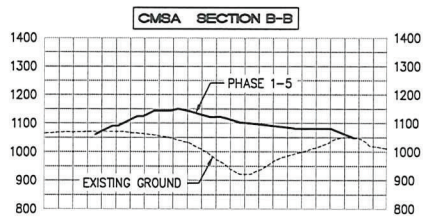
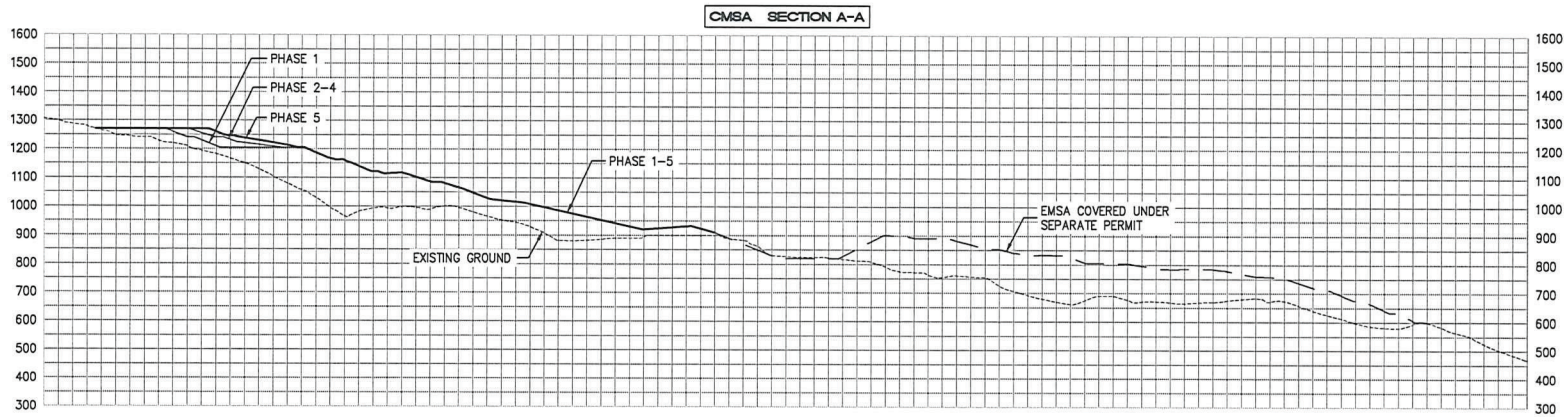


| OPERATOR | | SHEET INDEX | | Chang CONSULTANTS | |
|---------------|-------------------------------------------------------|-------------|-----------------------------------------------------------|---------------------------------------------------------------------------------------------------|--|
| NAME: | LEHIGH SOUTHWEST CEMENT COMPANY | SHEET 1 | TITLE SHEET | RECLAMATION PLAN FOR: PERMANENTE QUARRY CENTRAL MATERIALS STORAGE AREA PHASE 5 | |
| ADDRESS: | 24001 STEVENS CREEK BLVD CUPERTINO, CA 95014 | SHEET 2 | LEIGH AREA DETAILS | | |
| TELEPHONE: | 408-996-4000 | SHEET 3 | NORTH QUARRY PHASE 1 | | |
| SHORT LEGAL: | SEC 18 T7S R2W M2S; W 1/4 & SE 1/4 SEC 17 T7S R2W M2S | SHEET 4 | NORTH QUARRY PHASE 2 | | |
| A.P.N.: | 351-09-022; 351-10-005, 037, 038 | SHEET 5 | NORTH QUARRY PHASE 3 | | |
| SITE ADDRESS: | 24001 STEVENS CREEK BLVD. CUPERTINO, CA 95014 | SHEET 6 | NORTH QUARRY PHASE 4 | | |
| | | SHEET 7 | NORTH QUARRY PHASE 5 | | |
| | | SHEET 8 | SOUTH QUARRY PHASE 1 | | |
| | | SHEET 9 | SOUTH QUARRY PHASE 2 | | |
| | | SHEET 10 | SOUTH QUARRY PHASE 3 | | |
| | | SHEET 11 | SOUTH QUARRY PHASE 4 | | |
| | | SHEET 12 | SOUTH QUARRY PHASE 5 | | |
| | | SHEET 13 | POST-BACKFILL TO SOUTH QUARRY NORTH QUARRY CROSS-SECTIONS | | |
| | | SHEET 14 | CENTRAL MATERIALS STORAGE AREA PHASE 1 | | |
| | | SHEET 15 | CENTRAL MATERIALS STORAGE AREA PHASES 2, 3, AND 4 | | |
| | | SHEET 16 | CENTRAL MATERIALS STORAGE AREA PHASE 5 | | |
| | | SHEET 17 | CROSS-SECTIONS | | |
| | | SHEET 18 | SOUTH QUARRY PHASE 1 | | |
| | | SHEET 19 | SOUTH QUARRY PHASE 2 | | |
| | | SHEET 20 | SOUTH QUARRY PHASE 3 | | |
| | | SHEET 21 | SOUTH QUARRY PHASE 4 | | |
| | | SHEET 22 | SOUTH QUARRY PHASE 5 | | |
| | | SHEET 23 | SOUTH QUARRY PHASE 5 - BACKFILL | | |
| | | SHEET 24 | SOUTH QUARRY CROSS-SECTIONS | | |
| | | SHEET 25 | TOTAL STORAGE AREA PHASES 1, 2, 5 AND CROSS-SECTIONS | | |
| REVISION 1 | | SHEET | 18 | | |
| REVISION 2 | | OF | 25 | | |
| REVISION 3 | | CO. FILE | | | |

FOR PLAN CHECK ONLY

QUANUS CONSULTANTS
(650) 692-0760

MAY 23, 2010



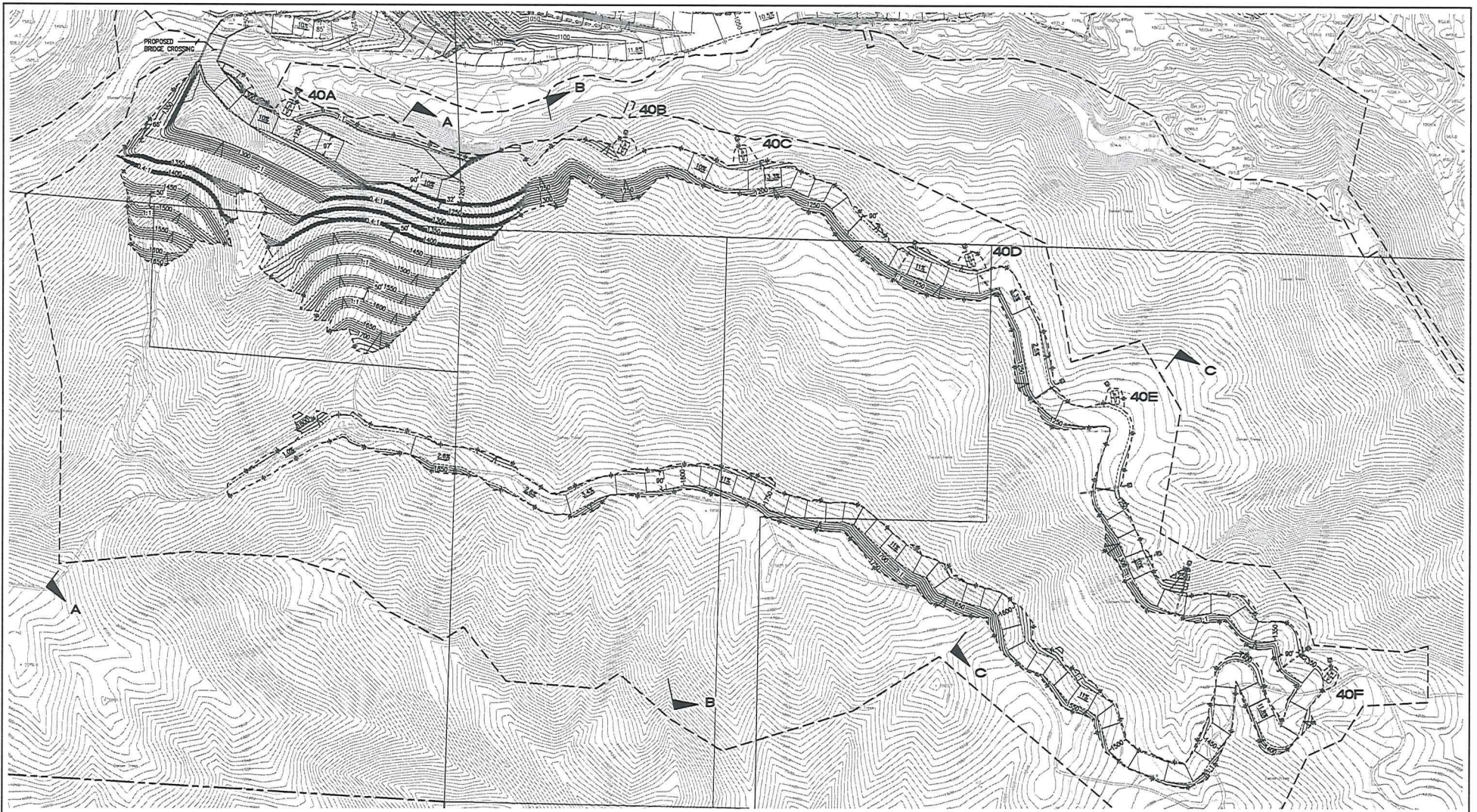
HORIZ. SCALE: 1" = 200'
VERT. SCALE: 1" = 200'

| OPERATOR | | SHEET INDEX | | Chang Consultants | |
|---------------|--------------------------------------------------------|-------------|----------------------------------------------------------|-----------------------------------------------------------------------------------------------------------------------------------|--------------------------------------------------------|
| NAME: | LEHIGH SOUTHWEST CEMENT COMPANY | SHEET 1 | TITLE SHEET | Civil Engineering-Hydraulic-Reclamation P.O. Box 9693 T. 958.832.0710 Alhambra South Fc. CA 91807 F. 958.832.1422 | |
| ADDRESS: | 24001 STEVENS CREEK BLVD CUPERTINO, CA 95014 | SHEET 2 | LEACH AND RETALS | | |
| TELEPHONE: | 408-996-4000 | SHEET 3 | NEXT MATERIALS STORAGE AREA PHASE 1 | | |
| SHORT LEGAL: | SEC 18 T7S R2W M28N W 1/4 & SE 1/4 SEC 17 T7S R2W M28N | SHEET 4 | NEXT MATERIALS STORAGE AREA PHASE 2, 3, AND 4 | SHEET 14 | CENTRAL MATERIALS STORAGE AREA PHASE 1 |
| A.P.N.: | 351-09-022; 351-10-005, 037, 038 | SHEET 5 | NEXT MATERIALS STORAGE AREA PHASE 5 | SHEET 15 | CENTRAL MATERIALS STORAGE AREA PHASE 2, 3, AND 4 |
| SITE ADDRESS: | 24001 STEVENS CREEK BLVD. CUPERTINO, CA 95014 | SHEET 6 | NEXT MATERIALS STORAGE AREA CROSS-SECTIONS | SHEET 16 | CENTRAL MATERIALS STORAGE AREA PHASE 2 |
| | | SHEET 7 | NORTH QUARRY PHASE 1 CROSS-SECTIONS | SHEET 17 | CENTRAL MATERIALS STORAGE AREA PHASE 3 |
| | | SHEET 8 | NORTH QUARRY PHASE 2 | SHEET 18 | SOUTH QUARRY PHASE 1 CROSS-SECTIONS |
| | | SHEET 9 | NORTH QUARRY PHASE 3 | SHEET 19 | SOUTH QUARRY PHASE 2 |
| | | SHEET 10 | NORTH QUARRY PHASE 4 | SHEET 20 | SOUTH QUARRY PHASE 3 |
| | | SHEET 11 | NORTH QUARRY PHASE 5 | SHEET 21 | SOUTH QUARRY PHASE 4 |
| | | SHEET 12 | PRE-BACKFILL TO SOUTH QUARRY NORTH QUARRY CROSS-SECTIONS | SHEET 22 | SOUTH QUARRY PHASE 5 |
| | | SHEET 13 | | SHEET 23 | SOUTH QUARRY PHASE 5 - BACKFILL |
| | | | | SHEET 24 | SOUTH QUARRY CROSS-SECTIONS |
| | | | | SHEET 25 | TOPSOIL STORAGE AREA PHASES 1, 2, 3 AND CROSS-SECTIONS |
| | | | | REVISION 1 | SHEET 17 |
| | | | | REVISION 2 | OF 25 |
| | | | | REVISION 3 | CO. FILE |

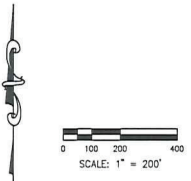
MAY 23, 2010

FOR PLAN CHECK ONLY

CHANG CONSULTANTS
(650) 692-0760



FOR PLAN CHECK ONLY



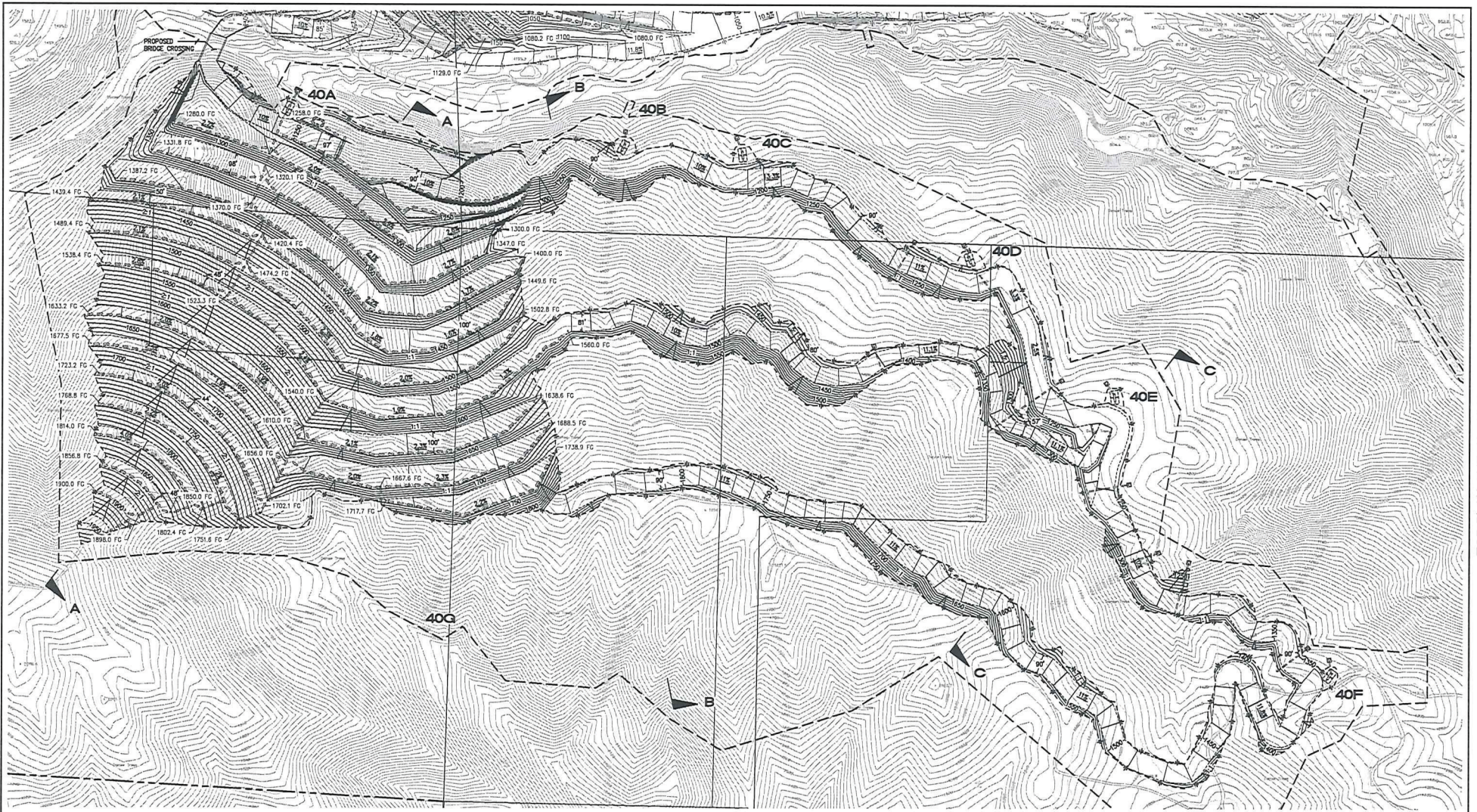
| OPERATOR | | SHEET INDEX | | Chang Consultants | |
|---------------|---------------------------------------------------------|-------------|------------------------------------------------|-------------------|---------------------------------------------------------------|
| NAME: | LEHIGH SOUTHWEST CEMENT COMPANY | SHEET 1 | TITLE SHEET | SHEET 14 | CENTRAL MATERIALS STORAGE AREA PHASE 1 |
| ADDRESS: | 24001 STEVENS CREEK BLVD CUPERTINO, CA 95014 | SHEET 2 | EAST MATERIALS STORAGE AREA PHASE 1 | SHEET 15 | CENTRAL MATERIALS STORAGE AREA PHASES 2, 3, AND 4 |
| TELEPHONE: | 408-996-4000 | SHEET 3 | WEST MATERIALS STORAGE AREA PHASES 1, 2, AND 4 | SHEET 16 | CENTRAL MATERIALS STORAGE AREA PHASE 2 |
| SHORT LEGAL: | SEC 18 T7S R2W M28M, W 1/4 & SE 1/4 SEC 17 T7S R2W M28M | SHEET 4 | WEST MATERIALS STORAGE AREA PHASE 3 | SHEET 17 | CENTRAL MATERIALS STORAGE AREA CROSS-SECTIONS |
| A.P.N.: | 351-09-022; 351-10-005, 037, 038 | SHEET 5 | WEST MATERIALS STORAGE AREA CROSS-SECTIONS | SHEET 18 | SOUTH QUARRY PHASE 1 |
| SITE ADDRESS: | 24001 STEVENS CREEK BLVD. CUPERTINO, CA 95014 | SHEET 6 | NORTH QUARRY PHASE 1 | SHEET 19 | SOUTH QUARRY PHASE 2 |
| | | SHEET 7 | NORTH QUARRY PHASE 2 | SHEET 20 | SOUTH QUARRY PHASE 3 |
| | | SHEET 8 | NORTH QUARRY PHASE 3 | SHEET 21 | SOUTH QUARRY PHASE 4 |
| | | SHEET 9 | NORTH QUARRY PHASE 4 | SHEET 22 | SOUTH QUARRY PHASE 5 |
| | | SHEET 10 | NORTH QUARRY PHASE 5 | SHEET 23 | PRE-BACKFILL TO SOUTH QUARRY TYPICAL STORAGE AREA |
| | | SHEET 11 | PRE-BACKFILL TO SOUTH QUARRY | SHEET 24 | SOUTH QUARRY CROSS-SECTIONS PHASES 1, 2, 3 AND CROSS-SECTIONS |
| | | SHEET 12 | POST-BACKFILL TO SOUTH QUARRY | SHEET 25 | |
| | | SHEET 13 | POST-BACKFILL TO SOUTH QUARRY | | |
| | | | | REVISION 1 | SHEET 18 OF 25 |
| | | | | REVISION 2 | |
| | | | | REVISION 3 | COL. FILE |

Chang Consultants
 Civil Engineering, Hydrology, Hydraulics & Reclamation
 P.O. Box 999 T. 950.932.2000
 Rancho Santa Fe, CA 92087 F. 950.932.1422

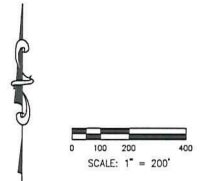
RECLAMATION PLAN FOR PERMANENTE QUARRY SOUTH QUARRY PHASE 1

PLANS, EXHIBIT TANTS (854) 692-0760

MAY 23, 2010



FOR PLAN CHECK ONLY



OPERATOR

NAME: LEMCO SOUTHWEST CEMENT COMPANY
 ADDRESS: 24001 STEVENS CREEK BLVD
 CUPERTINO, CA 95014
 TELEPHONE: 408-996-4000
 SHORT LEGAL: SEC 18 T7S R2W N034. W 1/4 & SE
 1/4 SEC 17 T7S R2W M03W
 A.P.N. 351-09-022; 351-10-005, 037, 038
 SITE ADDRESS: 24001 STEVENS CREEK BLVD.
 CUPERTINO, CA 95014

SHEET INDEX

| | | | |
|----------|------------------------------------------------|----------|--------------------------------------------------------|
| SHEET 1 | TITLE SHEET | SHEET 14 | CENTRAL MATERIALS STORAGE AREA PHASE 1 |
| SHEET 2 | LEGEND AND DETAILS | SHEET 15 | CENTRAL MATERIALS STORAGE AREA PHASES 2, 3, AND 4 |
| SHEET 3 | CENTRAL MATERIALS STORAGE AREA PHASE 1 | SHEET 16 | CENTRAL MATERIALS STORAGE AREA PHASE 2 |
| SHEET 4 | WEST MATERIALS STORAGE AREA PHASES 1, 3, AND 4 | SHEET 17 | CENTRAL MATERIALS STORAGE AREA CROSS-SECTIONS |
| SHEET 5 | WEST MATERIALS STORAGE AREA PHASE 2 | SHEET 18 | SOUTH QUARRY PHASE 1 |
| SHEET 6 | WEST MATERIALS STORAGE AREA CROSS-SECTIONS | SHEET 19 | SOUTH QUARRY PHASE 2 |
| SHEET 7 | SOUTH QUARRY PHASE 1 | SHEET 20 | SOUTH QUARRY PHASE 3 |
| SHEET 8 | NORTH QUARRY PHASE 1 | SHEET 21 | SOUTH QUARRY PHASE 4 |
| SHEET 9 | NORTH QUARRY PHASE 2 | SHEET 22 | SOUTH QUARRY PHASE 5 |
| SHEET 10 | NORTH QUARRY PHASE 3 | SHEET 23 | SOUTH QUARRY PHASE 5 - BACKFILL |
| SHEET 11 | NORTH QUARRY PHASE 4 | SHEET 24 | SOUTH QUARRY CROSS-SECTIONS |
| SHEET 12 | PRE-BACKFILL TO SOUTH QUARRY | SHEET 25 | TOPICAL STORAGE AREA PHASES 1, 2, 3 AND CROSS-SECTIONS |
| SHEET 13 | POST-BACKFILL TO SOUTH QUARRY | | |

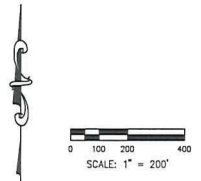
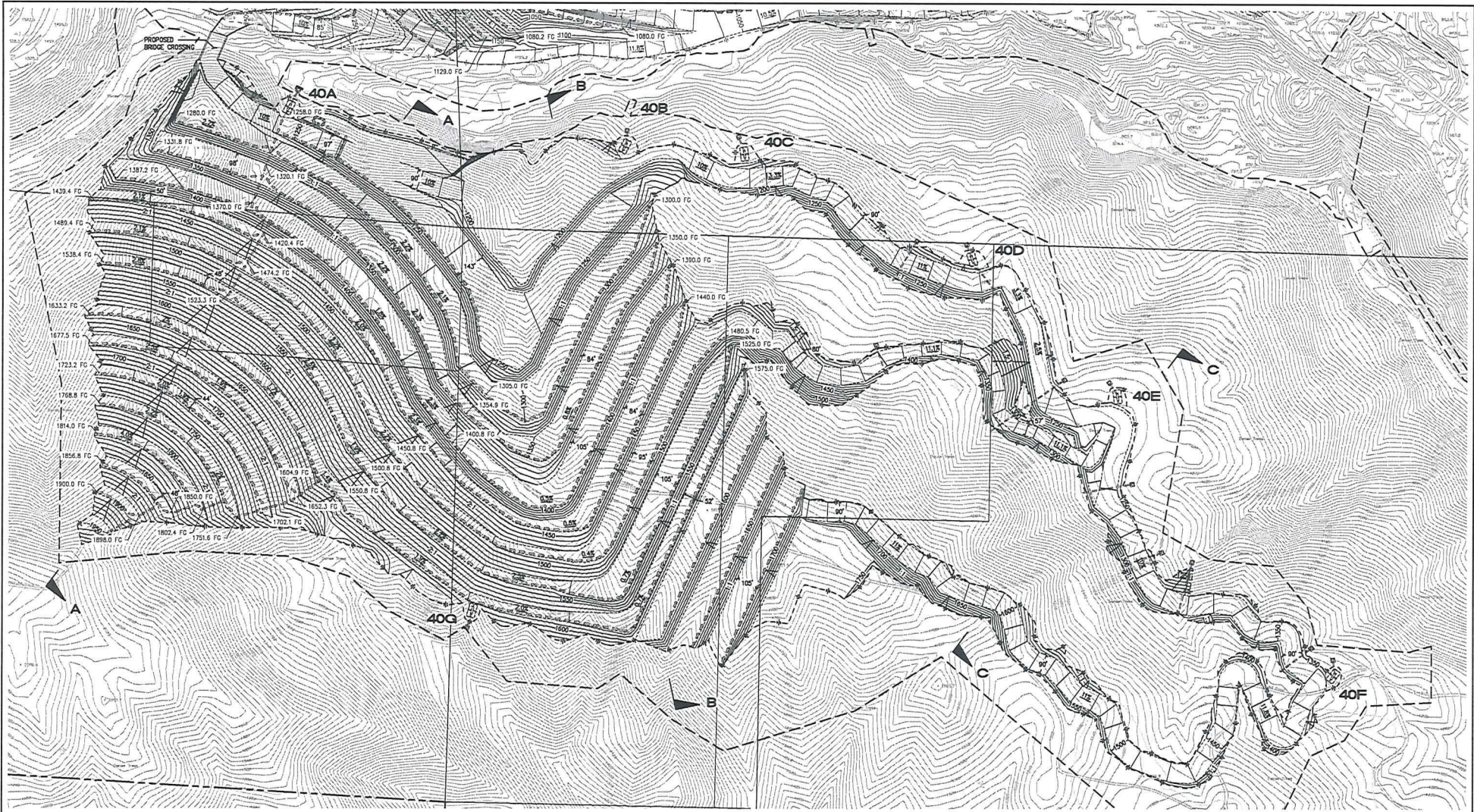
Chang Consultants
 Civil Engineering, Highway, Hydraulic, and Geotechnical
 P.O. Box 9895 T. 504 602 2700
 Rancho Santa Fe, CA 92087 F. 916 331 1422

RECLAMATION PLAN FOR PERMANENTE QUARRY SOUTH QUARRY PHASE 2

| | | |
|------------|----------|----------|
| REVISION 1 | | SHEET 19 |
| REVISION 2 | | OF 25 |
| REVISION 3 | CO. FILE | |

CHANG CONSULTANTS (650) 692-0760

MAY 23, 2010



OPERATOR

NAME: LEHIGH SOUTHWEST CEMENT COMPANY
 ADDRESS: 24001 STEVENS CREEK BLVD
 CLIPPERTON, CA 95014
 TELEPHONE: 408-998-4000
 SHORT LEGAL: SEC 18 T7S R2W M28A W 1/4 & SE
 1/4 SEC 17 T7S R2W M28B
 A.P.N. 351-09-022; 351-10-005, 037, 038
 SITE ADDRESS: 24001 STEVENS CREEK BLVD,
 CLIPPERTON, CA 95014

| SHEET INDEX | |
|-------------|-----------------------------------------------------------|
| SHEET 1 | TITLE SHEET |
| SHEET 2 | LEGEND AND DETAILS |
| SHEET 3 | WEST MATERIALS STORAGE AREA PHASE 1 |
| SHEET 4 | WEST MATERIALS STORAGE AREA PHASE 2, 3, AND 4 |
| SHEET 5 | WEST MATERIALS STORAGE AREA PHASE 5 |
| SHEET 6 | WEST MATERIALS STORAGE AREA CROSS-SECTIONS |
| SHEET 7 | SOUTH QUARRY PHASE 1 |
| SHEET 8 | SOUTH QUARRY PHASE 2 |
| SHEET 9 | SOUTH QUARRY PHASE 3 |
| SHEET 10 | SOUTH QUARRY PHASE 4 |
| SHEET 11 | SOUTH QUARRY PHASE 5 |
| SHEET 12 | POST-BACKFILL TO SOUTH QUARRY |
| SHEET 13 | POST-BACKFILL TO SOUTH QUARRY SOUTH QUARRY CROSS-SECTIONS |
| SHEET 14 | CENTRAL MATERIALS STORAGE AREA PHASE 1 |
| SHEET 15 | CENTRAL MATERIALS STORAGE AREA PHASES 2, 3, AND 4 |
| SHEET 16 | CENTRAL MATERIALS STORAGE AREA PHASE 5 |
| SHEET 17 | CENTRAL MATERIALS STORAGE AREA CROSS-SECTIONS |
| SHEET 18 | SOUTH QUARRY PHASE 1 |
| SHEET 19 | SOUTH QUARRY PHASE 2 |
| SHEET 20 | SOUTH QUARRY PHASE 3 |
| SHEET 21 | SOUTH QUARRY PHASE 4 |
| SHEET 22 | SOUTH QUARRY PHASE 5 |
| SHEET 23 | SOUTH QUARRY PHASE 5 - BACKFILL |
| SHEET 24 | SOUTH QUARRY CROSS-SECTIONS |
| SHEET 25 | TOPSOIL STORAGE AREA PHASES 1, 2, 3 AND CROSS-SECTIONS |

Chang Consultants
 Civil Engineering-Hydrology-Hydraulics-Reclamation
 P.O. Box 1499 T. 958 002 2700
 Riverside Calif. Ca. 92507 F. 958 251 1432

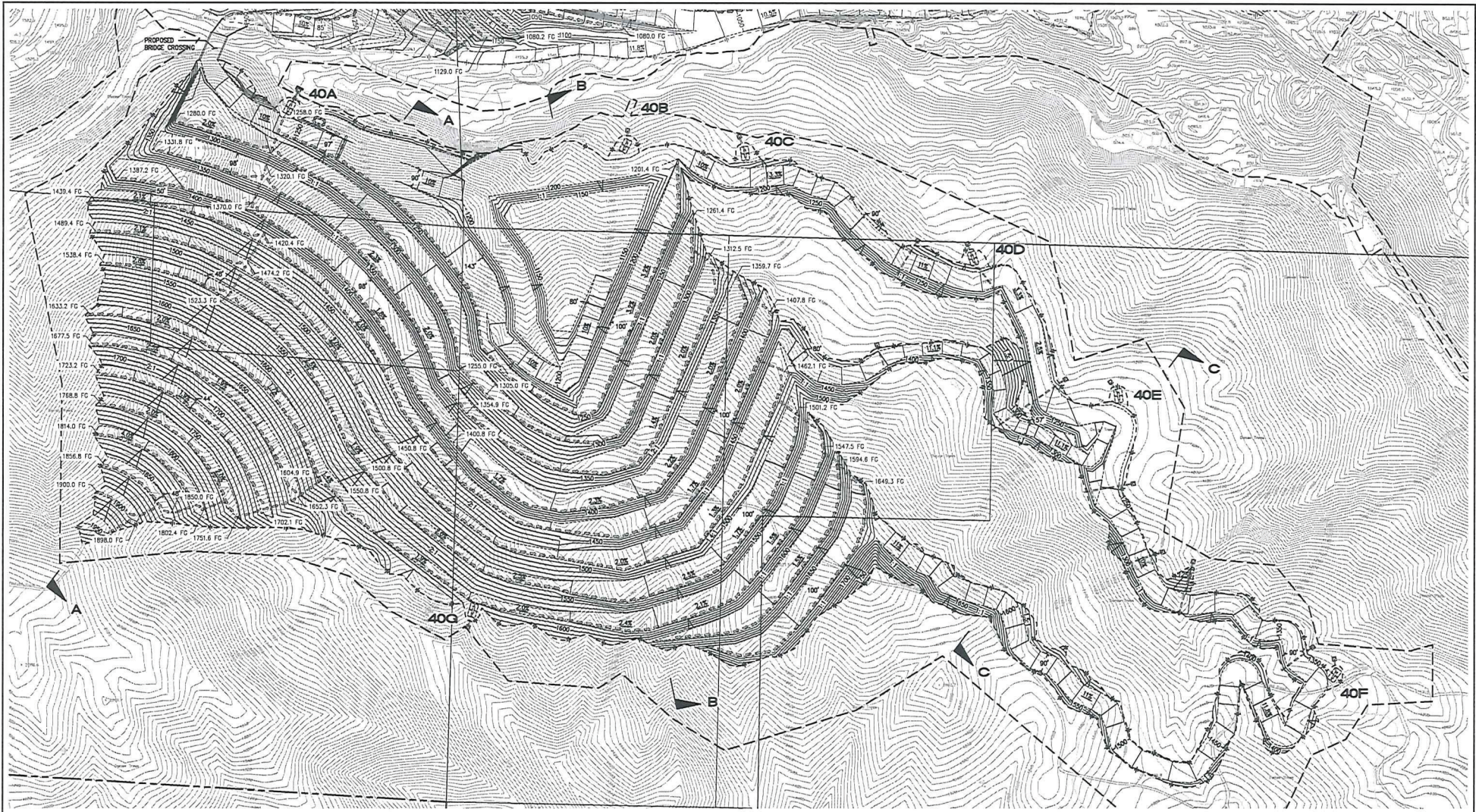
RECLAMATION PLAN FOR PERMANENT QUARRY SOUTH QUARRY PHASE 3

| | | |
|------------|----------|----------|
| REVISION 1 | | SHEET 20 |
| REVISION 2 | | OF 25 |
| REVISION 3 | CO. FILE | |

FOR PLAN CHECK ONLY

CHANG CONSULTANTS
 (858) 692-0760

MAY 23, 2010



| OPERATOR | | SHEET INDEX | |
|---------------|------------------------------------------------------------|-------------|-----------------------------------------------------------|
| NAME: | LEHIGH SOUTHWEST CEMENT COMPANY | SHEET 1 | TITLE SHEET |
| ADDRESS: | 24001 STEVENS CREEK BLVD CUPERTINO, CA 95014 | SHEET 2 | UPPER AND LOWER WEST MATERIALS STORAGE AREA |
| TELEPHONE: | 408-996-4000 | SHEET 3 | WEST MATERIALS STORAGE AREA PHASE 2, 3, AND 4 |
| SHORT LEGAL: | SEC 18 T7S R2W MOBN. W 1/4 & SE 1/4 SEC 17 T7S R2W MOBN | SHEET 4 | WEST MATERIALS STORAGE AREA PHASE 5 |
| A.P.N.: | 351-09-022, 351-10-005, 037, 038 | SHEET 5 | WEST MATERIALS STORAGE AREA CROSS-SECTIONS |
| SITE ADDRESS: | 24001 STEVENS CREEK BLVD. CUPERTINO, CA 95014 | SHEET 6 | SOUTH QUARRY PHASE 1 |
| | | SHEET 7 | SOUTH QUARRY PHASE 2 |
| | | SHEET 8 | SOUTH QUARRY PHASE 3 |
| | | SHEET 9 | SOUTH QUARRY PHASE 4 |
| | | SHEET 10 | SOUTH QUARRY PHASE 5 |
| | | SHEET 11 | SOUTH QUARRY PHASE 6 |
| | | SHEET 12 | PRE-BACKFILL TO SOUTH QUARRY |
| | | SHEET 13 | SOUTH QUARRY CROSS-SECTIONS |
| | | SHEET 14 | CENTRAL MATERIALS STORAGE AREA PHASE 1 |
| | | SHEET 15 | CENTRAL MATERIALS STORAGE AREA PHASES 2, 3, AND 4 |
| | | SHEET 16 | CENTRAL MATERIALS STORAGE AREA PHASE 5 |
| | | SHEET 17 | CENTRAL MATERIALS STORAGE AREA CROSS-SECTIONS |
| | | SHEET 18 | SOUTH QUARRY PHASE 1 |
| | | SHEET 19 | SOUTH QUARRY PHASE 2 |
| | | SHEET 20 | SOUTH QUARRY PHASE 3 |
| | | SHEET 21 | SOUTH QUARRY PHASE 4 |
| | | SHEET 22 | SOUTH QUARRY PHASE 5 |
| | | SHEET 23 | SOUTH QUARRY PHASE 6 - BACKFILL |
| | | SHEET 24 | SOUTH QUARRY CROSS-SECTIONS |
| | | SHEET 25 | TOPICAL STORAGE AREA PHASES 1, 2, 5 AND CROSS-SECTIONS |

Chang CONSULTANTS
Civil Engineering, Hydrology, Hydroinformatics
2035 San Ramon T. 950 010 0700
Riverside, Santa Fe, CA 92507 P. 818.521.1422

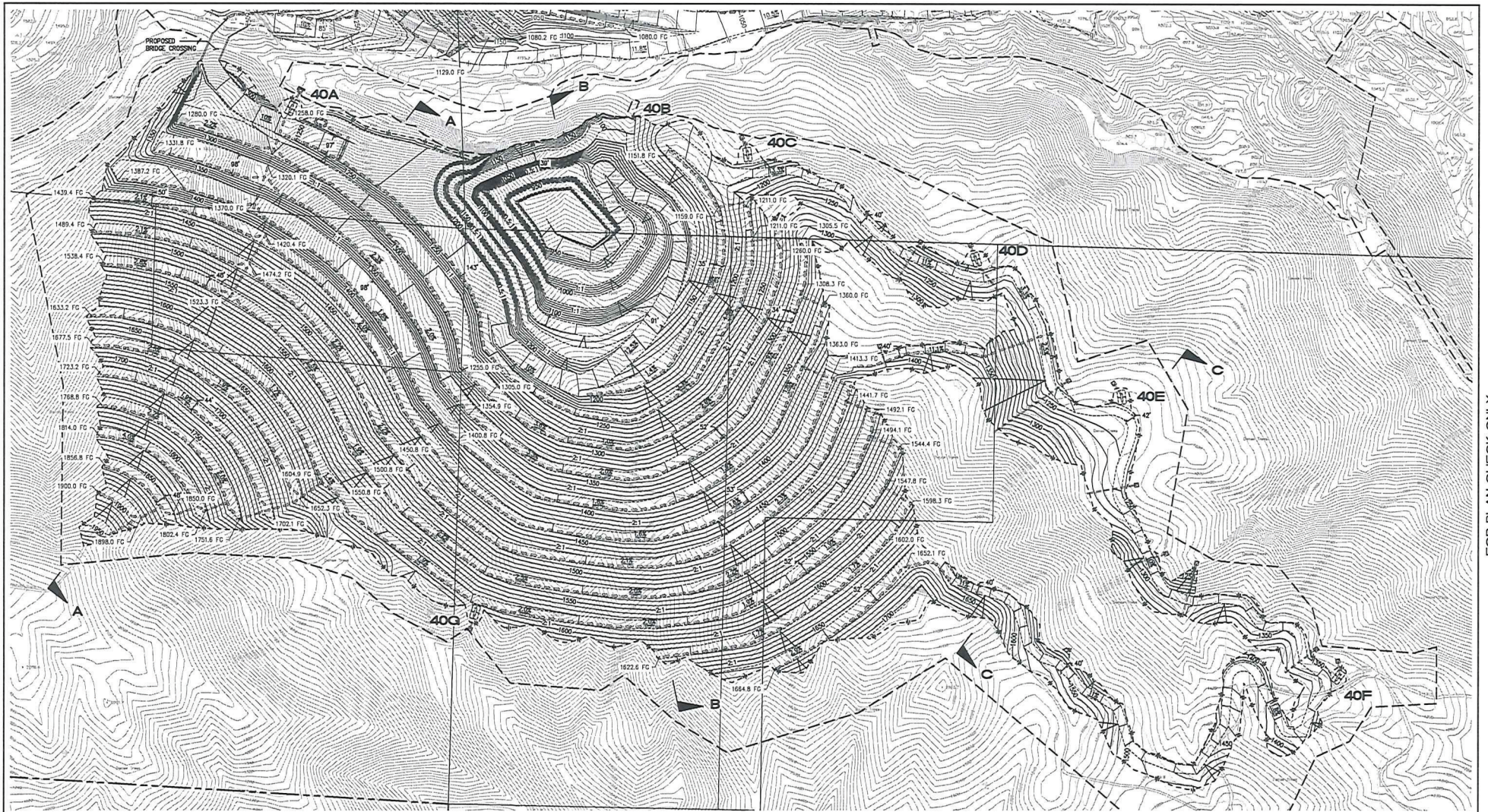
**RECLAMATION PLAN FOR:
PERMANENTE QUARRY
SOUTH QUARRY
PHASE 4**

| | | |
|------------|----------|----------|
| REVISION 1 | | SHEET |
| REVISION 2 | | 21 |
| REVISION 3 | CO. FILE | OF 25 |

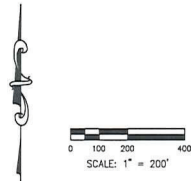
FOR PLAN CHECK ONLY

CHANG CONSULTANTS
(650) 692-0760

MAY 23, 2010



FOR PLAN CHECK ONLY



OPERATOR

NAME: LEEGH SOUTHWEST CEMENT COMPANY
 ADDRESS: 24001 STEVENS CREEK BLVD
 CUPERTINO, CA 95014
 TELEPHONE: 408-998-4000
 SHORT LEGAL: SEC 18 T7S R2W N03A; W 1/4 & SE 1/4 SEC 17 T7S R2W N03B
 A.P.N. 351-09-022; 351-10-004, 037, 038
 SITE ADDRESS: 24001 STEVENS CREEK BLVD.
 CUPERTINO, CA 95014

| SHEET INDEX | |
|-------------------------------------------------------------------------------------------------------------------------|-----------------------------------------------------------------------|
| SHEET 1: TITLE SHEET | SHEET 14: CENTRAL MATERIALS STORAGE AREA PHASE 5 |
| SHEET 2: LEGEND AND DETAILS | SHEET 15: CENTRAL MATERIALS STORAGE AREA PHASES 2, 3, AND 4 |
| SHEET 3: WEST MATERIALS STORAGE AREA PHASES 2, 3, AND 4 | SHEET 16: CENTRAL MATERIALS STORAGE AREA PHASE 5 |
| SHEET 4: WEST MATERIALS STORAGE AREA PHASE 5 | SHEET 17: CROSS-SECTIONS |
| SHEET 5: WEST MATERIALS STORAGE AREA PHASE 5 | SHEET 18: SOUTH QUARRY PHASE 1 |
| SHEET 6: WEST MATERIALS STORAGE AREA PHASE 5 | SHEET 19: SOUTH QUARRY PHASE 2 |
| SHEET 7: NORTH QUARRY PHASE 1 | SHEET 20: SOUTH QUARRY PHASE 3 |
| SHEET 8: NORTH QUARRY PHASE 2 | SHEET 21: SOUTH QUARRY PHASE 4 |
| SHEET 9: NORTH QUARRY PHASE 3 | SHEET 22: SOUTH QUARRY PHASE 5 |
| SHEET 10: NORTH QUARRY PHASE 4 | SHEET 23: SOUTH QUARRY PHASE 5 - BACKFILL |
| SHEET 11: NORTH QUARRY PHASE 5 | SHEET 24: SOUTH QUARRY CROSS-SECTIONS |
| SHEET 12: PRE-BACKFILL TO SOUTH QUARRY NORTH QUARRY PHASE 5 - POST-BACKFILL TO SOUTH QUARRY NORTH QUARRY CROSS-SECTIONS | SHEET 25: SOUTH QUARRY STORAGE AREA PHASES 1, 2, 3 AND CROSS-SECTIONS |

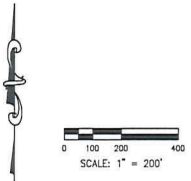
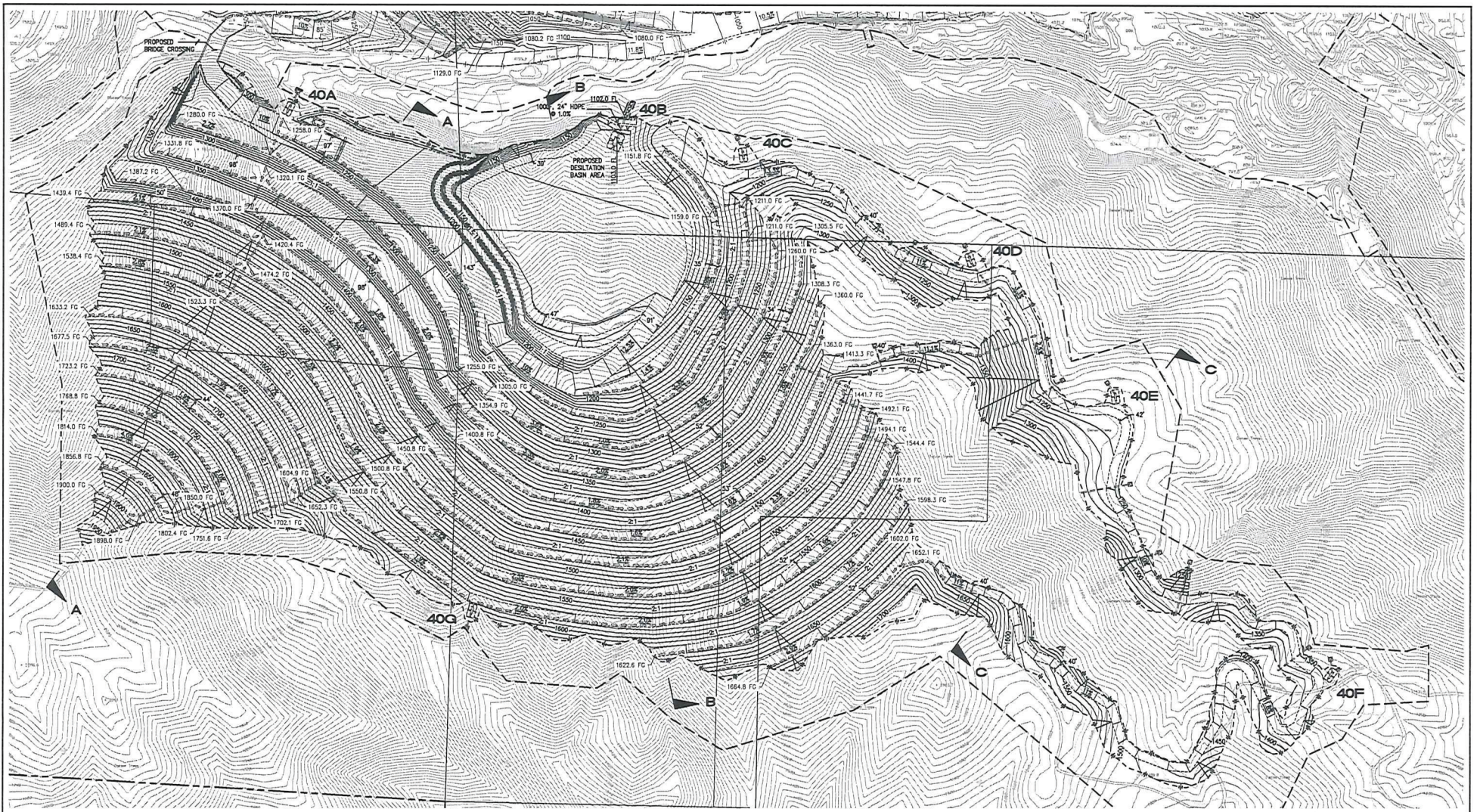
Chang Consultants
Civil Engineering - Hydrology - Geotechnical - Construction
 P.O. Box 4070
 Rancho Santa Fe, CA 92087 T: 951.652.0700
 F: 951.652.1425

**RECLAMATION PLAN FOR
 PERMANENTE QUARRY
 SOUTH QUARRY
 PHASE 5**

| | | |
|------------|----------|-------|
| REVISION 1 | | SHEET |
| REVISION 2 | | 22 |
| REVISION 3 | CO. FILE | OF |
| | | 25 |

CHANG CONSULTANTS
(669) 692-0760

MAY 23, 2010



| OPERATOR | | SHEET INDEX | |
|---------------|---------------------------------------------------------|-------------|-----------------------------------------------------------|
| NAME: | LEHIGH SOUTHWEST CEMENT COMPANY | SHEET 1 | TITLE SHEET |
| ADDRESS: | 24001 STEVENS CREEK BLVD CLIPPERTING, CA 95014 | SHEET 2 | LEACH AREA DETAILS |
| TELEPHONE: | 408-999-4000 | SHEET 3 | WEST MATERIALS STORAGE AREA PHASE 1 |
| SHORT LEGAL: | SEC 18 T7S R2W M2B4; W 1/4 & SE 1/4 SEC 17 T7S R2W M2B4 | SHEET 4 | WEST MATERIALS STORAGE AREA PHASES 2, 3, AND 4 |
| A.P.N.: | 351-09-022; 351-10-005, 037, 038 | SHEET 5 | WEST MATERIALS STORAGE AREA PHASE 5 |
| SITE ADDRESS: | 24001 STEVENS CREEK BLVD. CLIPPERTING, CA 95014 | SHEET 6 | WEST MATERIALS STORAGE AREA CROSS-SECTIONS |
| | | SHEET 7 | CROSS-SECTIONS SOUTH QUARRY PHASE 1 |
| | | SHEET 8 | NORTH QUARRY PHASE 2 |
| | | SHEET 9 | SOUTH QUARRY PHASE 3 |
| | | SHEET 10 | NORTH QUARRY PHASE 4 |
| | | SHEET 11 | NORTH QUARRY PHASE 5 |
| | | SHEET 12 | PRE-BACKFILL TO SOUTH QUARRY NORTH QUARRY PHASE 1 |
| | | SHEET 13 | POST-BACKFILL TO SOUTH QUARRY NORTH QUARRY CROSS-SECTIONS |
| | | SHEET 14 | CENTRAL MATERIALS STORAGE AREA PHASE 1 |
| | | SHEET 15 | CENTRAL MATERIALS STORAGE AREA PHASES 2, 3, AND 4 |
| | | SHEET 16 | CENTRAL MATERIALS STORAGE AREA PHASE 5 |
| | | SHEET 17 | CENTRAL MATERIALS STORAGE AREA CROSS-SECTIONS |
| | | SHEET 18 | SOUTH QUARRY PHASE 1 |
| | | SHEET 19 | SOUTH QUARRY PHASE 2 |
| | | SHEET 20 | SOUTH QUARRY PHASE 3 |
| | | SHEET 21 | SOUTH QUARRY PHASE 4 |
| | | SHEET 22 | SOUTH QUARRY PHASE 5 |
| | | SHEET 23 | SOUTH QUARRY PHASE 5 - BACKFILL |
| | | SHEET 24 | SOUTH QUARRY CROSS-SECTIONS |
| | | SHEET 25 | TYPICAL STORAGE AREA PHASES 1, 2, 3 AND CROSS-SECTIONS |

Chang Consultants
Civil Engineering, Hydrology, Wetlands & Reclamation
P.O. Box 9456, Rancho Santa Fe, CA 92071
Tel: 949.421.2700 Fax: 949.421.1402

RECLAMATION PLAN FOR PERMANENTE QUARRY SOUTH QUARRY PHASE 5 - BACKFILL

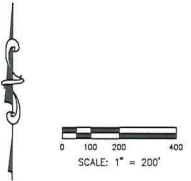
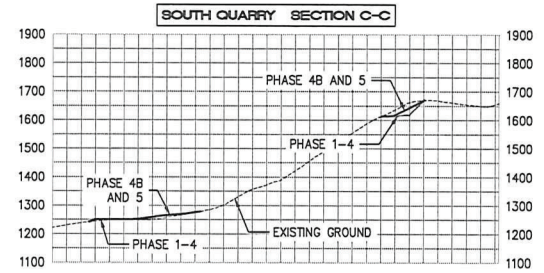
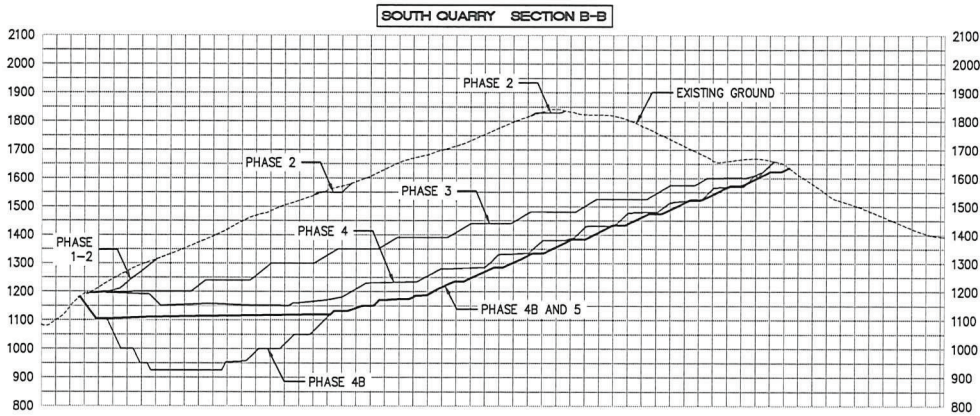
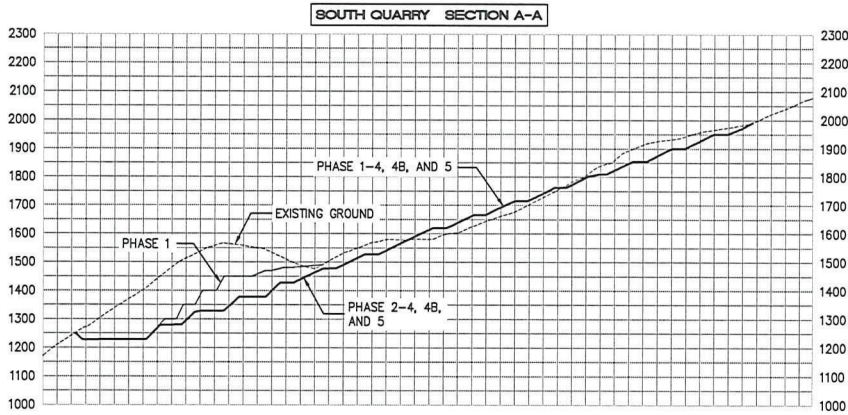
| | |
|------------|----------|
| REVISION 1 | SHEET 25 |
| REVISION 2 | 26 |
| REVISION 3 | 27 |

CO. FILE

FOR PLAN CHECK ONLY

CHANG CONSULTANTS
(949) 421-2700

MAY 23, 2010



| OPERATOR | | SHEET INDEX | | Chang CONSULTANTS | |
|---------------|--------------------------------------------------------|-------------|-----------------------------------------------------------|-------------------|---------------------------------------------------|
| NAME: | LEHIGH SOUTHWEST CEMENT COMPANY | SHEET 1 | TITLE SHEET | SHEET 14 | CENTRAL MATERIALS STORAGE AREA PHASE 1 |
| ADDRESS: | 24001 STEVENS CREEK BLVD CUPERTINO, CA 95014 | SHEET 2 | LEACH AND METALS | SHEET 15 | CENTRAL MATERIALS STORAGE AREA PHASES 2, 3, AND 4 |
| TELEPHONE: | 408-996-4000 | SHEET 3 | WEST MATERIALS STORAGE AREA PHASE 1 | SHEET 16 | CENTRAL MATERIALS STORAGE AREA PHASE 2 |
| SHORT LEGAL: | SEC 18 T7S R2W M284 W 1/4 & SE 1/4 SEC 17 T7S R2W M284 | SHEET 4 | WEST MATERIALS STORAGE AREA PHASES 2, 3, AND 4 | SHEET 17 | CENTRAL MATERIALS STORAGE AREA PHASE 3 |
| A.P.N.: | 351-09-022; 351-10-005, 037, 038 | SHEET 5 | WEST MATERIALS STORAGE AREA PHASE 2 | SHEET 18 | CROSS-SECTIONS |
| SITE ADDRESS: | 24001 STEVENS CREEK BLVD. CUPERTINO, CA 95014 | SHEET 6 | WEST MATERIALS STORAGE AREA PHASE 2 | SHEET 19 | SOUTH QUARRY PHASE 1 |
| | | SHEET 7 | NORTH QUARRY PHASE 1 | SHEET 20 | SOUTH QUARRY PHASE 2 |
| | | SHEET 8 | NORTH QUARRY PHASE 2 | SHEET 21 | SOUTH QUARRY PHASE 3 |
| | | SHEET 9 | NORTH QUARRY PHASE 3 | SHEET 22 | SOUTH QUARRY PHASE 4 |
| | | SHEET 10 | NORTH QUARRY PHASE 4 | SHEET 23 | SOUTH QUARRY PHASE 5 |
| | | SHEET 11 | NORTH QUARRY PHASE 5 | SHEET 24 | SOUTH QUARRY PHASE 5 - BACKFILL |
| | | SHEET 12 | PRE-BACKFILL TO SOUTH QUARRY | SHEET 25 | TOPSOIL STORAGE AREA |
| | | SHEET 13 | POST-BACKFILL TO SOUTH QUARRY NORTH QUARRY CROSS-SECTIONS | | |
| | | | | REVISION 1 | SHEET 24 OF 25 |
| | | | | REVISION 2 | |
| | | | | REVISION 3 | CO. FILE |

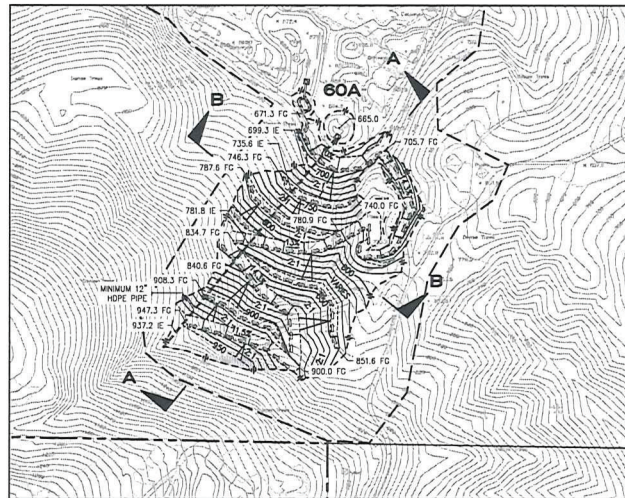
FOR PLAN CHECK ONLY

CHANG CONSULTANTS
(650) 692-0760

MAY 23, 2010

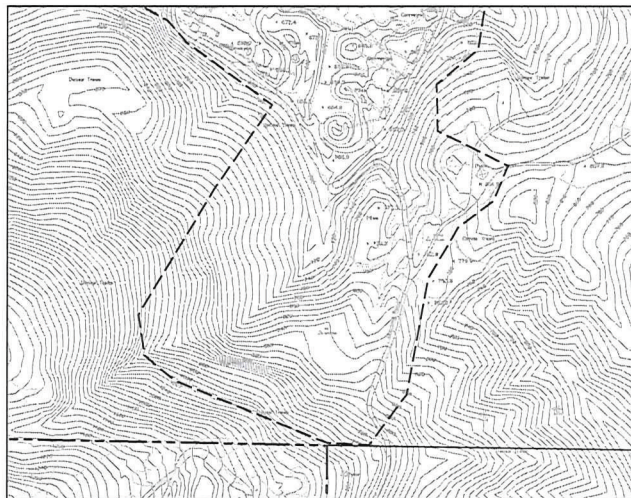


PHASE 1

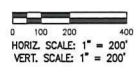
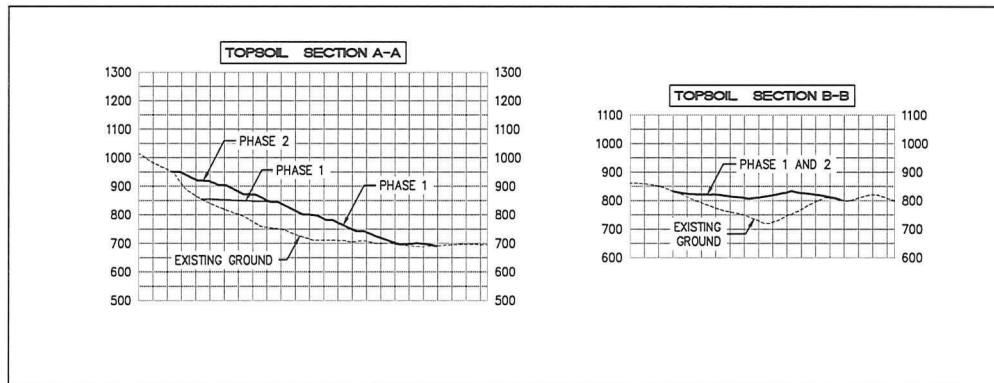


PHASE 2

NOTE:
PIPE MATERIAL SHALL BE CAPABLE OF WITHSTANDING
PROPOSED DEPTHS OR CONCRETE-ENCASED, AS
NEEDED.



PHASE 5



OPERATOR

NAME: LEHIGH SOUTHWEST CEMENT COMPANY
 ADDRESS: 24001 STEVENS CREEK BLVD
 CUPERTINO, CA 95014
 TELEPHONE: 408-996-4000
 SHORT LEGAL: SEC 18 T7S R2W NDBM; W 1/4 & SE
 1/4 SEC 17 T7S R2W NDBM
 A.P.N. 351-08-022; 351-10-005, 037, 038
 SITE ADDRESS: 24001 STEVENS CREEK BLVD.
 CUPERTINO, CA 95014

SHEET INDEX

| | | | |
|----------|-----------------------------------------------------------|----------|---------------------------------------------------|
| SHEET 1 | TITLE SHEET | SHEET 14 | CENTRAL MATERIALS STORAGE AREA PHASE 1 |
| SHEET 2 | LOADING AND RETRAKE | SHEET 15 | CENTRAL MATERIALS STORAGE AREA PHASES 2, 3, AND 4 |
| SHEET 3 | WEST MATERIALS STORAGE AREA PHASES 1, 2, 3, AND 4 | SHEET 16 | CENTRAL MATERIALS STORAGE AREA PHASE 2 |
| SHEET 4 | WEST MATERIALS STORAGE AREA PHASE 2 | SHEET 17 | CENTRAL MATERIALS STORAGE AREA PHASE 3 |
| SHEET 5 | WEST MATERIALS STORAGE AREA PHASE 3 | SHEET 18 | SOUTH QUARRY PHASE 1 |
| SHEET 6 | WEST MATERIALS STORAGE AREA PHASE 4 | SHEET 19 | SOUTH QUARRY PHASE 2 |
| SHEET 7 | CROSS-SECTIONS | SHEET 20 | SOUTH QUARRY PHASE 3 |
| SHEET 8 | NORTH QUARRY PHASE 1 | SHEET 21 | SOUTH QUARRY PHASE 4 |
| SHEET 9 | NORTH QUARRY PHASE 2 | SHEET 22 | SOUTH QUARRY PHASE 5 - BACKFILL |
| SHEET 10 | NORTH QUARRY PHASE 3 | SHEET 23 | SOUTH QUARRY CROSS-SECTIONS |
| SHEET 11 | NORTH QUARRY PHASE 4 | SHEET 24 | SOUTH QUARRY CROSS-SECTIONS |
| SHEET 12 | PRE-BACKFILL TO SOUTH QUARRY | SHEET 25 | PHASES 1, 2, 3 AND CROSS-SECTIONS |
| SHEET 13 | POST-BACKFILL TO SOUTH QUARRY NORTH QUARRY CROSS-SECTIONS | | |

Chang CONSULTANTS
 Civil Engineering, Hydrology, Geotechnical & Surveying
 P.O. Box 9496 T 808 612 0710
 Rancho Santa Fe, CA 92087 F 868 832 1402

**RECLAMATION PLAN FOR:
 PERMANENTE QUARRY
 TOPSOIL STORAGE AREA
 PHASES 1, 2, 5 AND CROSS-SECTIONS**

| | | | |
|------------|---------|-------|----|
| REVISION 1 | | SHEET | 25 |
| REVISION 2 | | OF | 25 |
| REVISION 3 | CD FILE | | |

FOR PLAN CHECK ONLY

CHANG CONSULTANTS
 (650) 692-0760