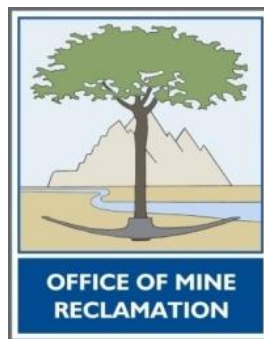


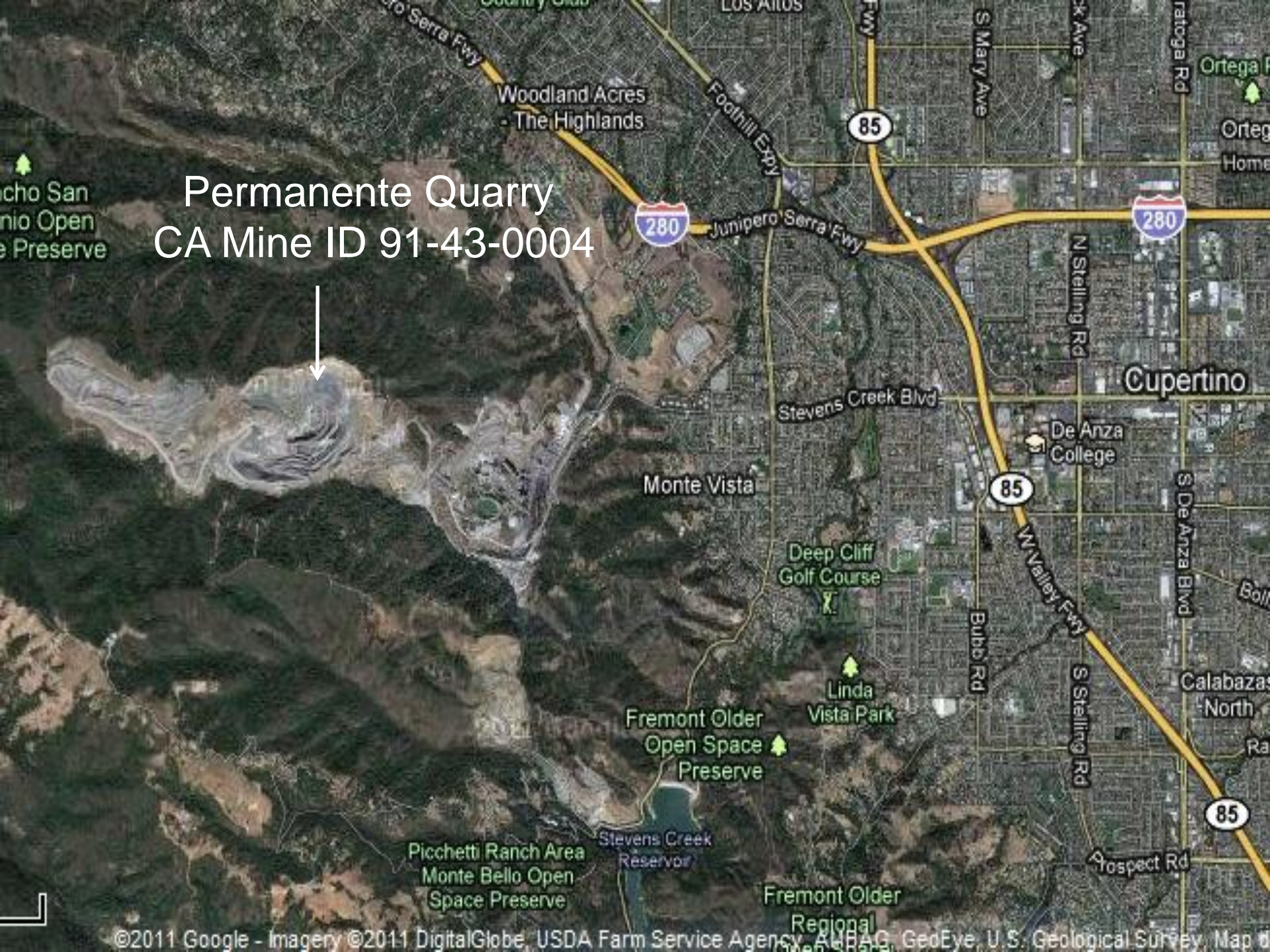
Permanente Quarry

CA Mine ID 91-43-0004



Managing California's Working Lands

Permanente Quarry
CA Mine ID 91-43-0004



Reclamation Plan #2250-13-66-84P

- Approved in 1985 for Kaiser Cement
- Covered 330 acres
- Reclamation plan life 25 years
- Reclamation Amendment required for final reclamation

Hanson Permanente Quarry

Reclamation Plan
Boundaries



0 375 750 1125 1500 1875 2250 2625 3000 Feet



Landslides 1987-2001



Emergency Repair Proposal

- Reviewed by OMR on November 19, 2002
- Slide affected Midpeninsula Regional Open Space District Property
- County decided that a reclamation plan amendment was required

OMR Inspection – 2005/2006





STATE MINING & GEOLOGY BOARD
DEPARTMENT OF CONSERVATION
STATE OF CALIFORNIA



Publication Date: April 3, 2006:

RESULTS OF PUBLIC MEETING/HEARING

THE STATE MINING AND GEOLOGY BOARD

Conducted a Regular Business Meeting on:

Thursday, April 13, 2006

9:00 A.M.

**State Capitol
10th & L Streets
Assembly Hearing Room # 126
Sacramento, California**

45-Day Notice Issued

Notice of Violation/Order to Comply (Order)

- In response to 15 Day notice issued by OMR on September 22, 2006
- Issued by Santa Clara County on October 10, 2006
- Required:
 - Amended reclamation plan
 - Adjusted financial assurance
- Compliance achieved by December 30, 2007

Hanson Permanente Quarry

Reclamation Plan
Boundaries

Disturbed
Area

Disturbed
Area

Disturbed
Area

0 375 750 1125 1500 1875 2250 2625 3000 Feet



Crusher Relocation

- Proposed reclamation plan amendment
- Did not resolve outstanding compliance issues
- OMR commented on March 6, 2007
- Amended reclamation plan must address all areas disturbed by mining

Amended Reclamation Plan Application

- Submitted to Santa Clara County in January 2007
- Comprehensive geotechnical investigation not included
- OMR's review on May 18, 2007 recommended resubmittal of amended plan with comprehensive geotechnical investigation

Revised 45 Day Notice

- 45 Day notice issued on April 13, 2006, was rescinded on September 13, 2007
- Revised 45 Day notice – October 2, 2007
- Revised 45 Day notice was rescinded on July 10, 2008
- When the notice was rescinded, the Permanente Quarry had not fully achieved compliance with SMARA

24 month extension

- County letter dated May 21, 2008
- Phased submittal & approval
- Geotechnical evaluation due in December 2009
- Submit revised amendment application February 1, 2010
- Environmental impact report completed in September 2011

Reclamation Plan
Boundaries

East Materials Storage Area



0 375 750 1125 1500 1875 2250 2625 3000 Feet



East Materials Storage Yard

- County issued Notice of Violation on June 20, 2008
- Separate reclamation plan amendment for EMSA
- Amended reclamation plan must addresses all areas disturbed by mining
- Application submittal date extended to May 2010

Comprehensive Amendment

- Comprehensive amendment was submitted to OMR on May 28, 2010
- Additional material was submitted on August 28, 2010 and October 19, 2010
- OMR sent comments on December 15, 2010
- County is reviewing comments

Compliance

- 523.4 acres are disturbed per County inspection report
- Compliance to be achieved by 2012 per most recent inspection report
- Compliance projection is approximately 5 years longer than allowed by 2006 Order
- Compliance projection is 10 years after violations were brought to County's attention
- Does not qualify to be included on AB3098 List

Questions?



0 250 500 750 1000

